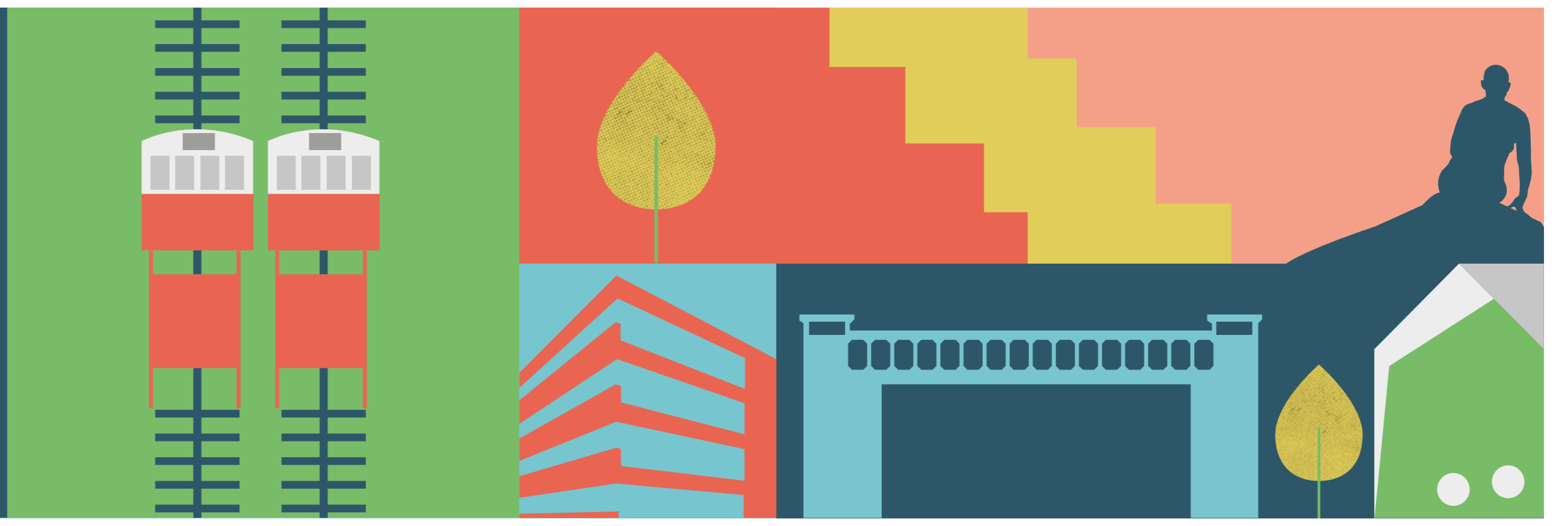


# PLACE PLAN



## NEXT STEPS FOR THE FUTURE OF FOLKESTONE TOWN CENTRE

### Place Plan:

Ambitious plans to create a sustainable and vibrant future for Folkestone town centre are moving forward. Folkestone & Hythe District Council has begun work with a consultant team to design and develop priority projects set out in the Folkestone Place Plan, which was approved by the council in September 2021.

The work will include engagement with partners, stakeholders and the local community on the detail of the projects which may be part of an application for the government's Levelling Up funding. This provides support for local authorities to deliver transformational investment into town centres.

The Place Plan identifies six 'missions' for tackling Folkestone's 'Grand Challenge' and creating a town centre fit for the future. These missions include celebrating what's good, a town centre for the future, a place for all voices, moving sustainably, accessing opportunity and delivering sustainable quality.

Sustainability is at the heart of the Place Plan, alongside improvements to transport and movement in the town centre. Sites and buildings that can be repurposed or redeveloped are also identified in the plan.

### Next steps:

The consultant team is being led by We Made That which successfully worked with Folkestone & Hythe District Council to develop the Place Plan. Six projects will be developed to the next level of detail to help understand more about what will be required to deliver each element of each of the projects.

The team will review each project against its potential impact, its business case, estimated costs and estimated time-frame for delivery. A number of elements will be selected to be included in a potential bid to the Levelling Up Fund once this is announced.

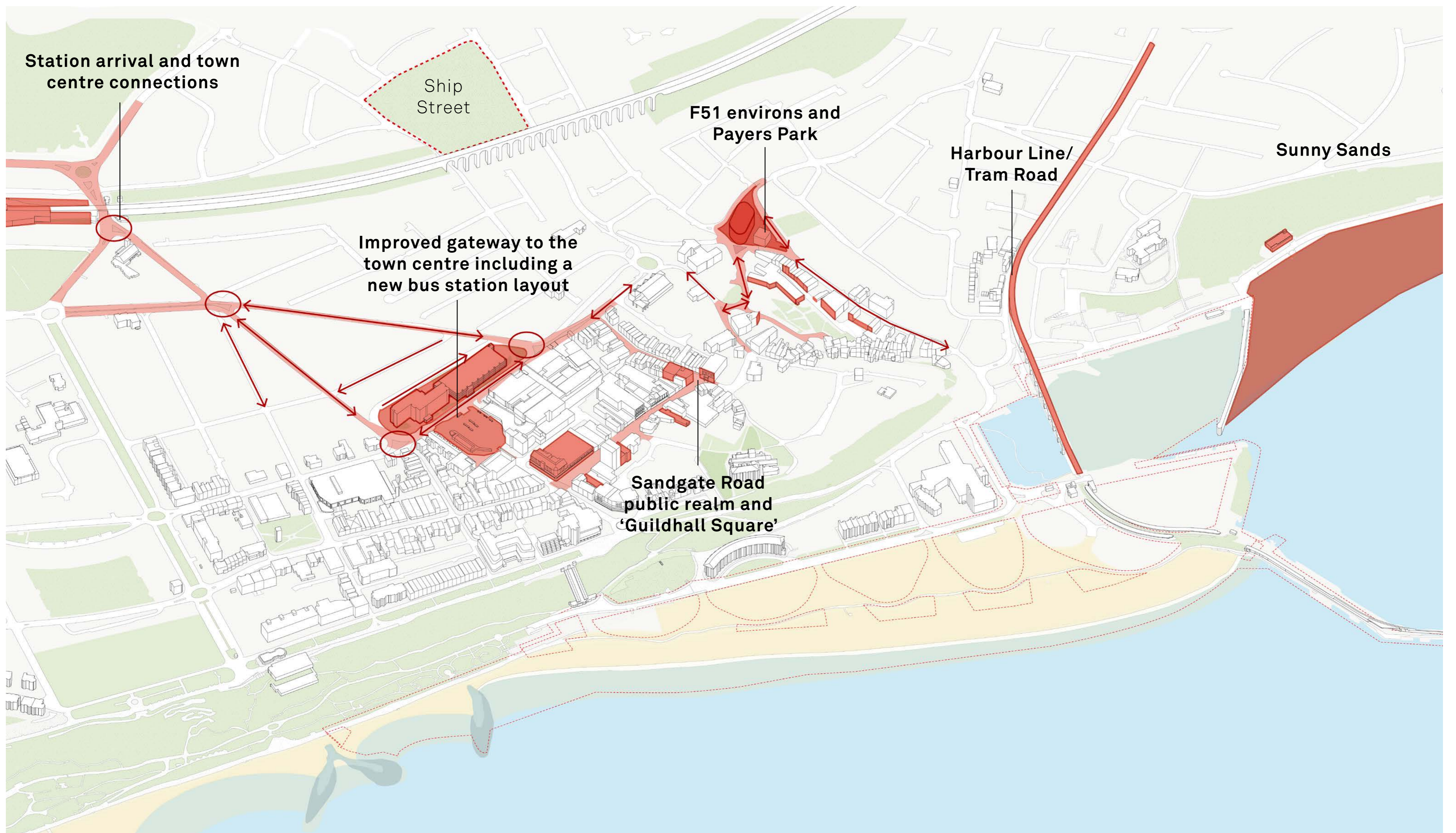
### Six priority projects

- 1 Station Arrival and Town Centre Connections:**  
the Folkestone Central rail station arrival and town centre connections
- 2 Improved Gateway to the Town Centre and Bouverie Square:**  
the area around Middleberg Square, Bouverie Square and Shellons Street as a gateway into the town centre
- 3 Sandgate Road and Town Centre Public Realm:**  
the pedestrianised areas of the town centre and the service streets behind them
- 4 F51 Environs and Payers Park:**  
the area around the new skate park F51 and Payers Park
- 5 Harbour Line & Tram Road:**  
bringing forward the Harbour Line and reconfiguring Tram Road
- 6 Sunny Sands:**  
improving use and accessibility of Sunny Sands.

We want to hear from you, your views are important to us:

**What do you think should be the top priority projects?**

**Do you have any specific thoughts or concerns about any of the projects?**



# LET US KNOW WHAT YOU WOULD LIKE TO SEE AS PART OF THESE PROJECTS:

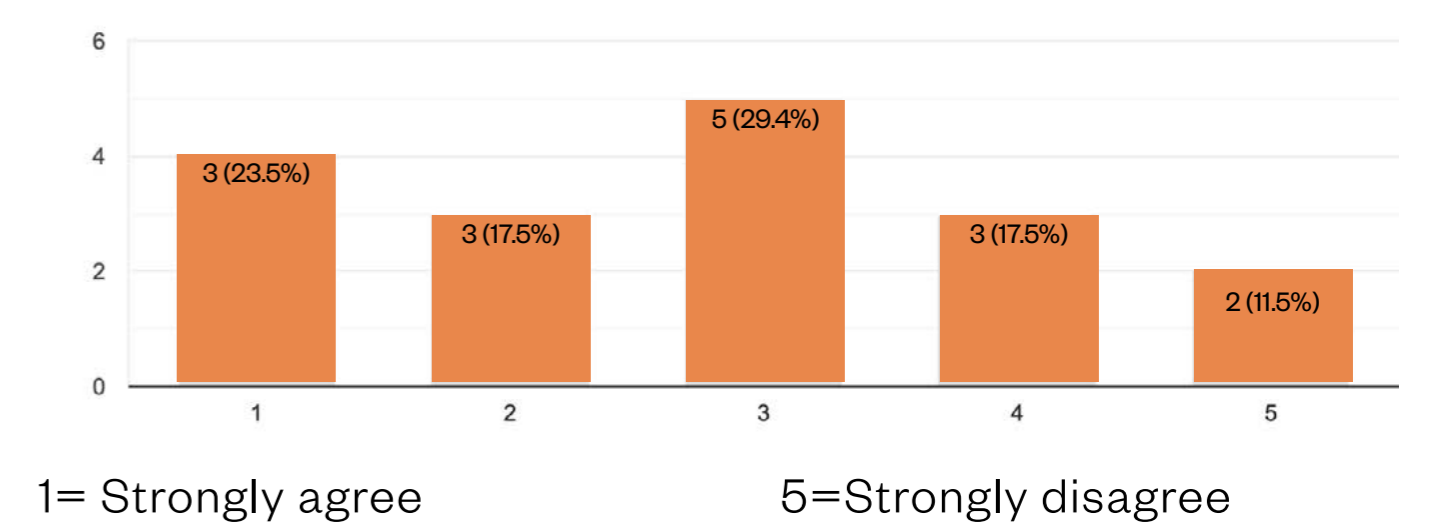
## 1. Station Arrival and Town Centre Connections:



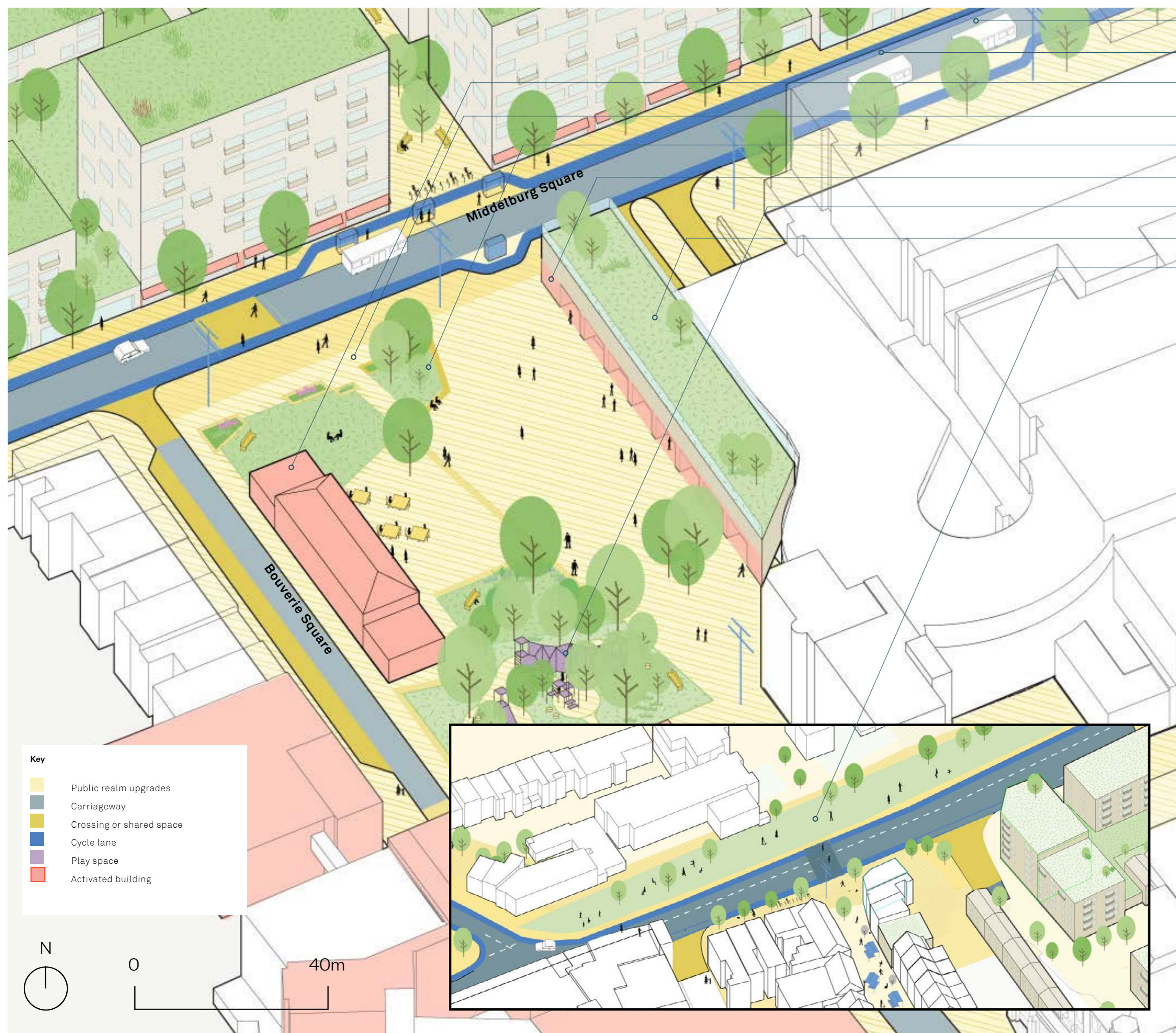
- Community Garden at the disused platform
- Improved pedestrian space outside station
- Mobility hub alongside train station: potential to include cycle hire/ electric cycles
- Secure cycle storage facility
- Wayfinding at strategic junctions
- More pedestrian space to activate the public realm
- Overhaul of the legacy highway system: Cheriton Gardens & Cheriton Road, redesign of junction to enable all directions of travel from this point
- New 'skate route' to the town centre via Broadmead Road and the Ship Street site

### What you have told us before:

How strongly do you agree with the proposed actions for the station arrival?



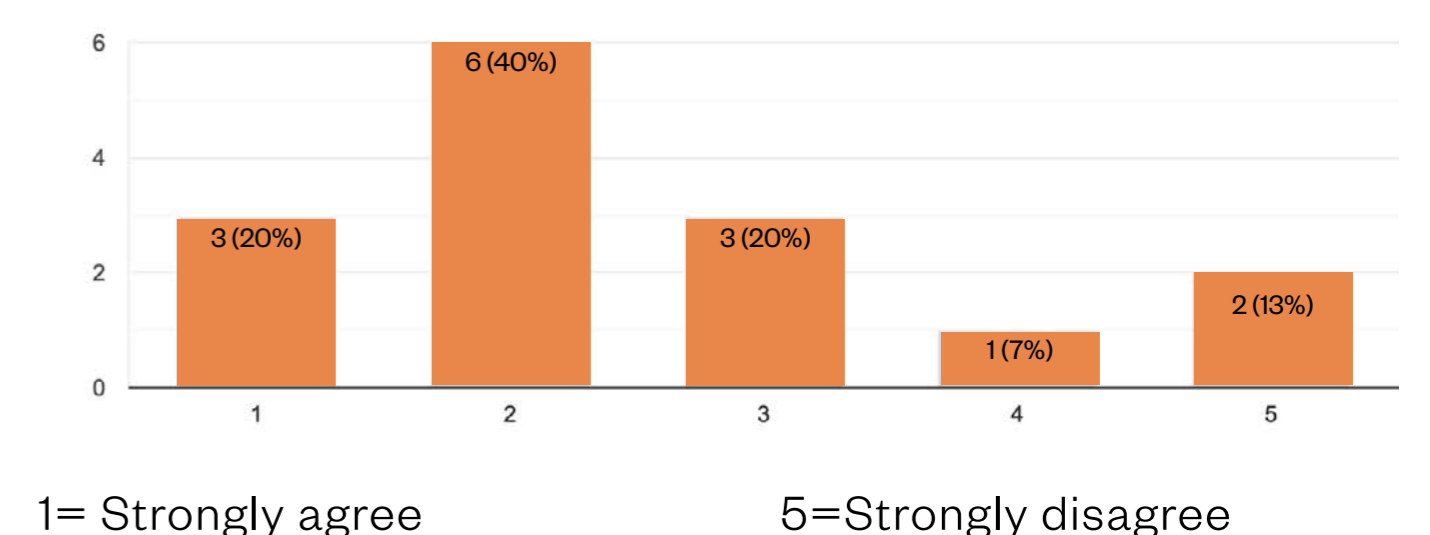
## 2. Improved Gateway to the Town Centre and Bouverie Square:



- Redesign of road layout to improve all modes of travel and movement
- Improved gateway to the town centre including a new bus station layout
- Repurposed bus station building and relocated bus driver facilities
- Reinstating Bouverie Square as an arrival space and focal point
- Rain gardens and sustainable urban drainage
- Mobility Hub with cycle hire and storage
- Play equipment
- New building to frame the eastern edge of the square
- Public realm improvements and crossings along Shellons Street

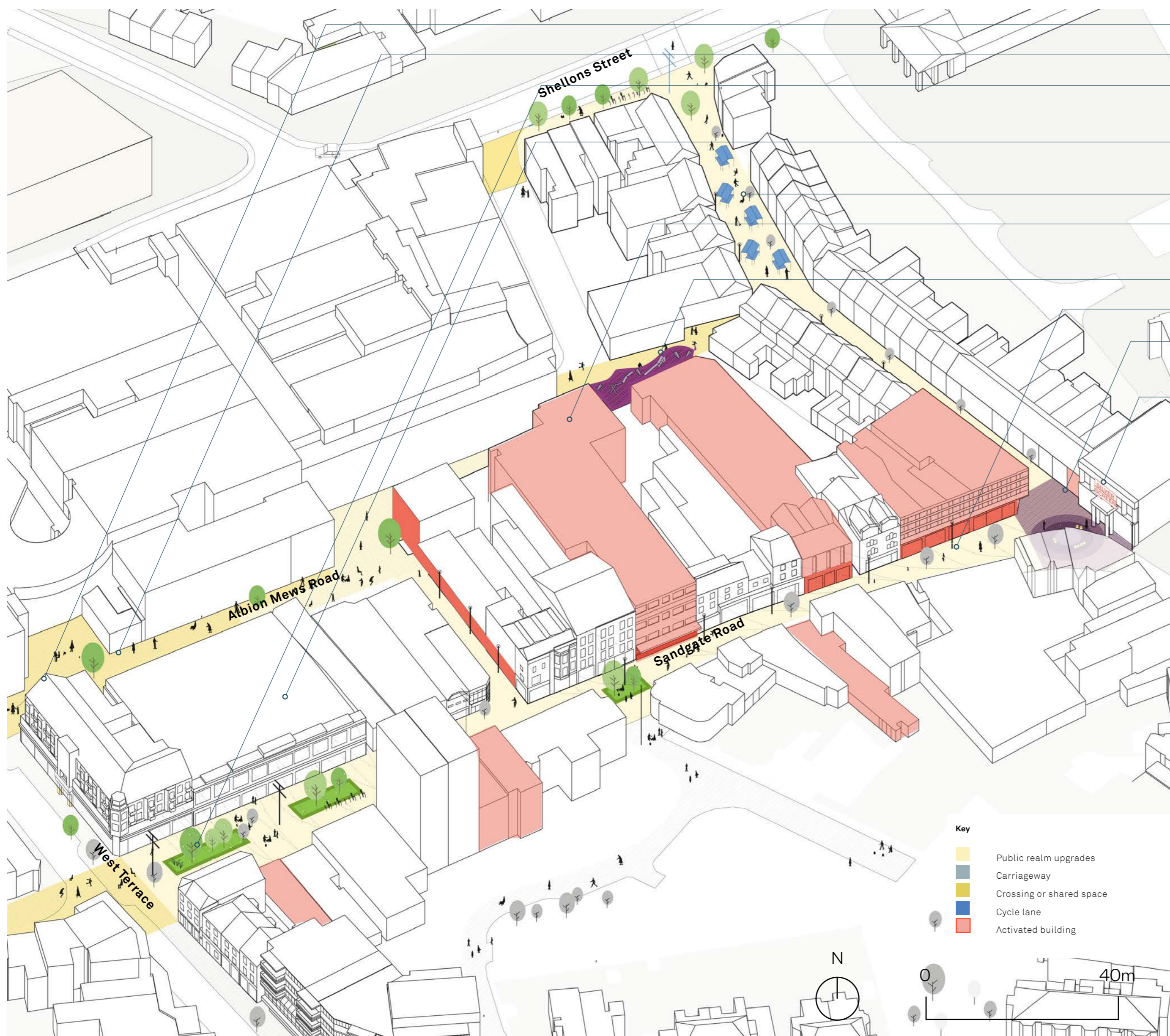
### What you have told us before:

How strongly do you agree with the proposed actions for the town centre core?



# LET US KNOW WHAT YOU WOULD LIKE TO SEE AS PART OF THESE PROJECTS:

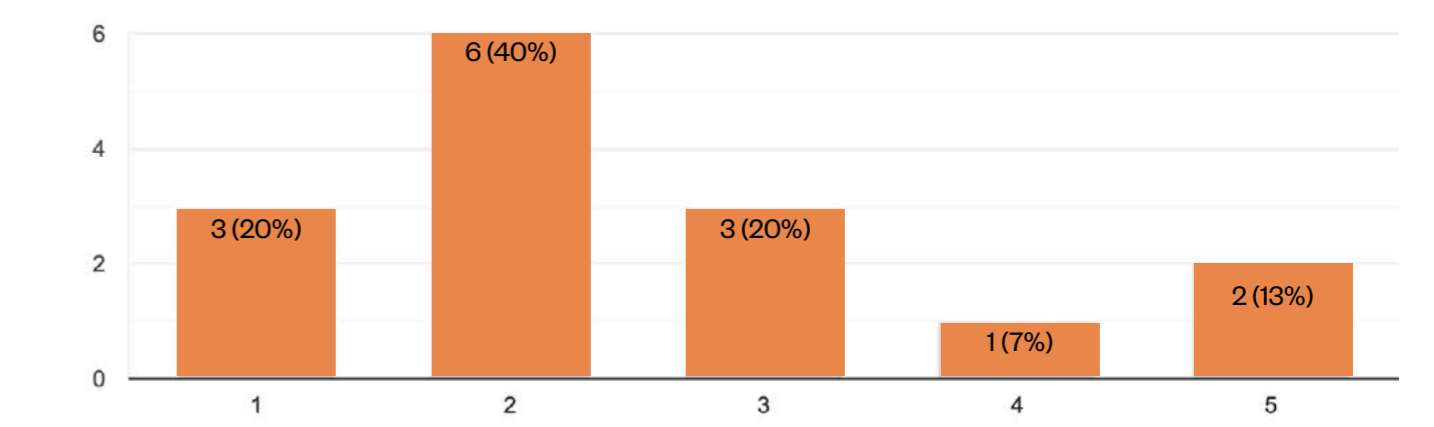
## 3. Sandgate Road and Town Centre Public Realm:



- Look to activate rear elevations of retail units
- Look to improve back streets as pedestrian routes
- Planting and rain gardens to provide sustainable drainage and green amenity
- Bring forward new commercial uses, in addition to Health Centre, for Folca
- Upgrades to Guildhall Street and improved market offer
- 'Town Lab': Folkestone Town Centre as a 'lab' to test and experiment new ideas, e.g. smaller, more flexible units, community uses, flexible workspace
- Skateable features to attract F51 visitors into the town centre
- Market improvement programme
- Public realm and signage to better frame and celebrate the Guildhall building
- Cinema/museum/town council signage

### What you have told us before:

How strongly do you agree with the proposed actions for the town centre core?



1= Strongly agree

5=Strongly disagree

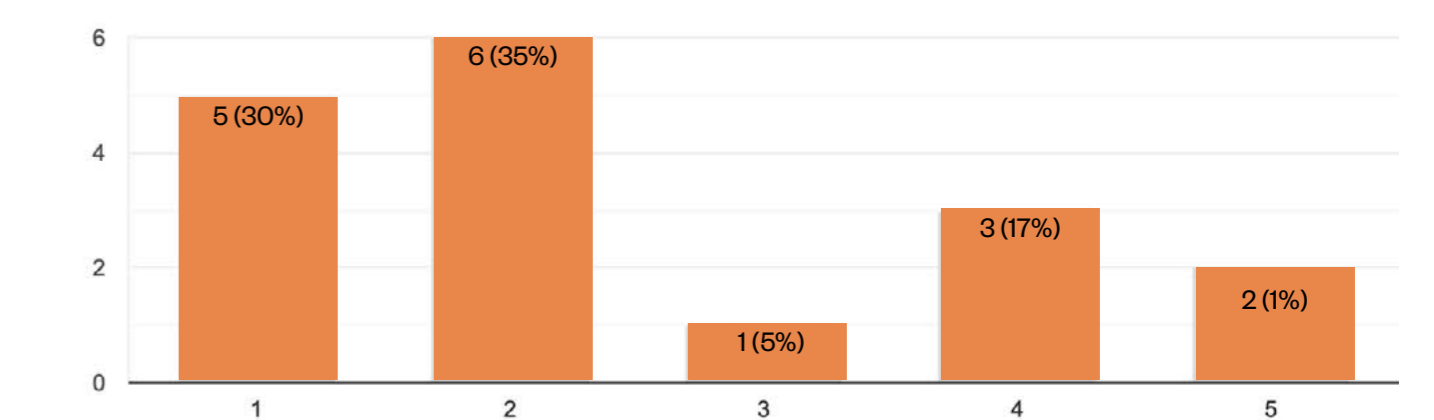
## 4. F51 Environs and Payers Park:



- Redesign of road layout to improve all modes of travel and movement
- New public space by F51
- Consider opening up Pent Stream
- Look at wider parking provision and consider re-appropriating some parking spaces to public realm
- Hub of potential uses around Payers Park
- Create a pedestrian friendly space at Mill Bay as a link between F51 and the Old High Street area
- New learning space for visual/creative arts

### What you have told us before:

How strongly do you agree with the proposed actions for the Creative Quarter?

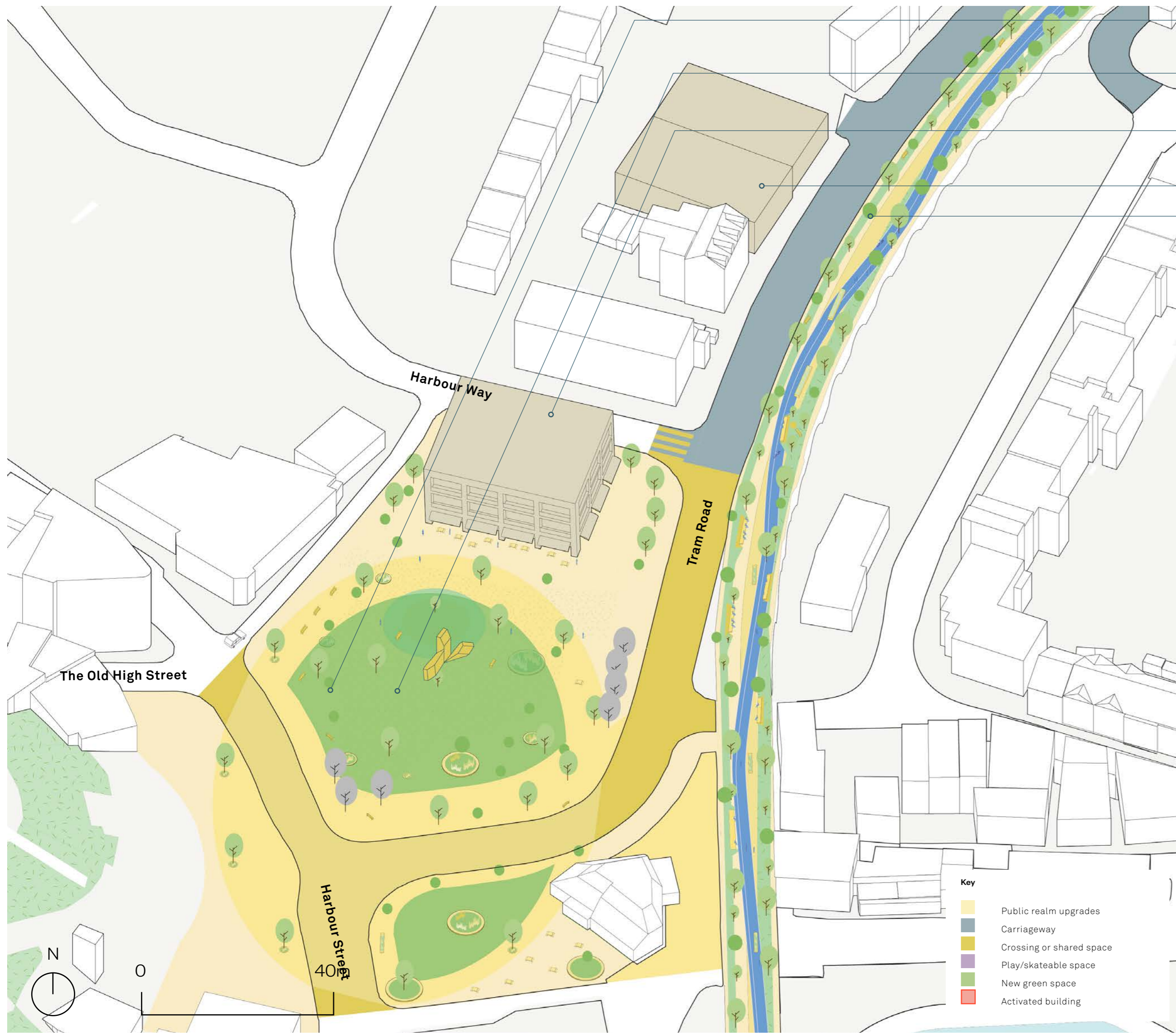


1= Strongly agree

5=Strongly disagree

# LET US KNOW WHAT YOU WOULD LIKE TO SEE AS PART OF THESE PROJECTS:

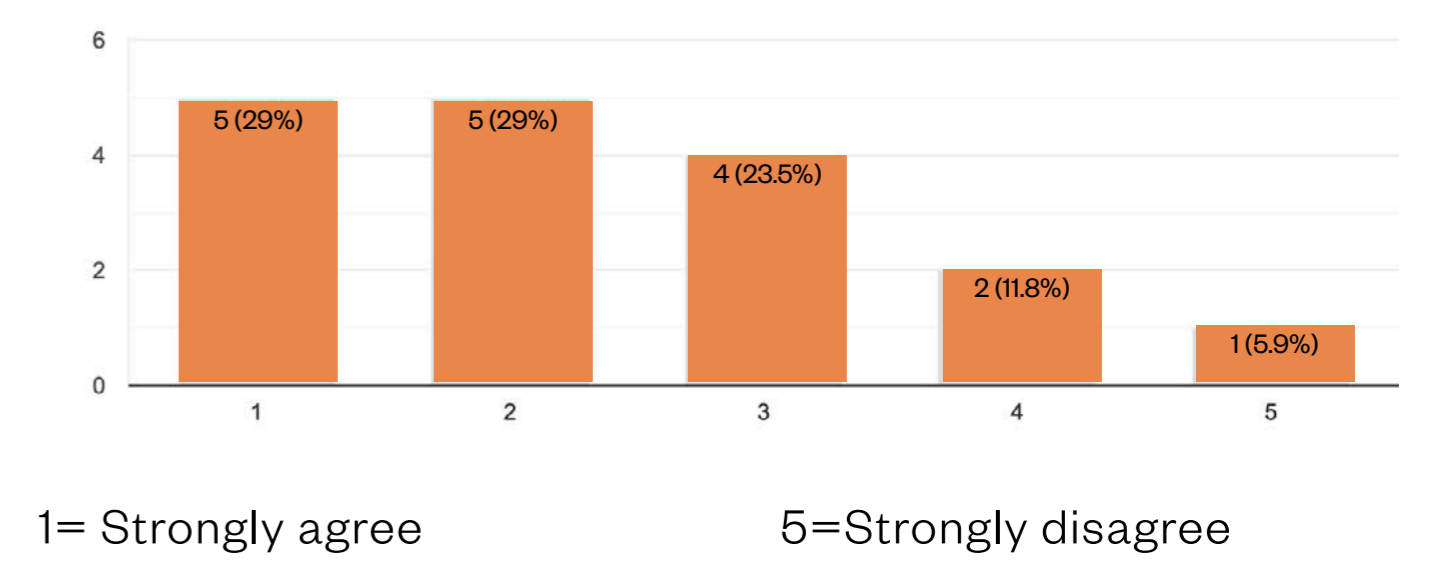
## 5. Harbour Line & Tram Road:



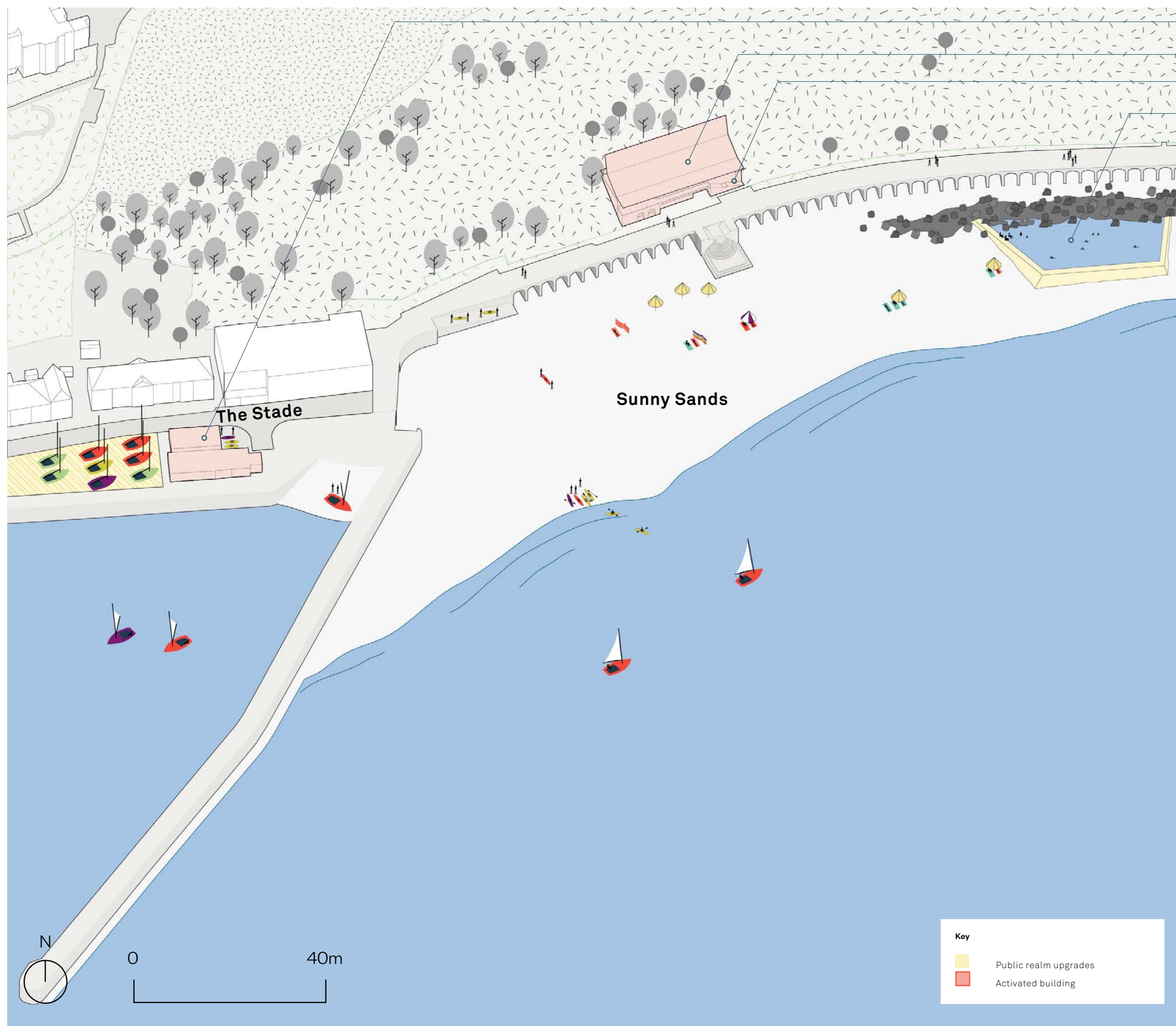
- Public realm upgrades to Harbour Street and exploring options for Tram Road car park to become a key public space
- Reconsider layout of public space to accommodate pedestrian routes and programmed events
- Potential new development with space at ground floor for commercial or cultural uses
- New car park to relocate parking facility from Harbour Street
- Harbour Line/ Tram Road improvements, including shared cycle and walkway, seating, play features and interpretation boards

### What you have told us before:

How strongly do you agree with the proposed actions for the harbour and Sunny Sands?



## 6. Sunny Sands:



- Improved facilities for watersports including Changing Spaces toilet
- Introduce kiosk facility into pumphouse building
- Refurbish disabled toilet
- Explore feasibility for a tidal pool

### What you have told us before:

How strongly do you agree with the proposed actions for the harbour and Sunny Sands?

