



Funded by
UK Government

Welcome and introduction

In January 2023 Folkestone & Hythe District Council was awarded £19.8 million from the government's Levelling Up Fund for the Folkestone – A Brighter Future project which aims to transform Folkestone town.

This public engagement event details proposals to be considered under phase two of the project and focusses predominantly on Middelburg Square, as well as design principles for Shellons Street.

Proposals for this phase include moving the bus station from Bouverie Square to Middelburg Square. Bus stops will extend around the north and south sides of Middelburg Square, creating a pedestrian-friendly transport hub and enabling Bouverie Square to return to its former use as a garden square.

A new landscaped area will be created in Foresters Way, running alongside Shellons Street. The complicated road network here forms part of a traffic system that was developed primarily to serve the town's former port and ferry services.

A new pedestrian link between Guildhall Street North and Guildhall Street is planned to make it easier to cross the road into town, across Shellons Street. This will help join the area north of Shellons Street to the town centre.

To help you envisage how this might look, we have created the area in virtual reality so why not take a magic carpet ride around the centre of Folkestone? A pre-event booking system was made available to help manage demand, but if you did not book, we will try to find you a seat on the carpet ride - just speak to a member of the team to learn more.

How we got here, and what's next

2021

In 2021 the Folkestone Town Centre Place Plan was adopted, after many months of public consultation and numerous events. As part of the consultation work, six priority projects were identified from the 74 that were named in the plan.

2022

These six priority projects were developed in line with the Government's Levelling Up Fund criteria. Further public consultation was undertaken to decide on the projects that were to be the subject of F&HDC's Levelling Up Fund bid. Three of the six priority projects for the bid were identified and were submitted to the Government for consideration.

2023

Government announced that Folkestone had been successful in its bid for Levelling Up Fund money and work on the project got underway. Public engagement events for phase one took place, and feedback provided by the public have fed into the draft proposals. The phase two engagement period is now open and feedback gathered as part of this phase will also feed into the proposals for the town centre.

2024

Further engagement events will take place and procurement of construction contractors will commence. Building work will then begin, starting with phase one.

2025

Construction of all phases to be completed.

Responses to phase one engagement feedback

Thank you to everyone who gave us their views after the public engagement in July 2023 about phase one of Folkestone – A Brighter Future.

Your views and comments help us understand if you think this project is going in the right direction and what needs to change. Your feedback so far has been essential in refining the scheme to make it work better for the community.

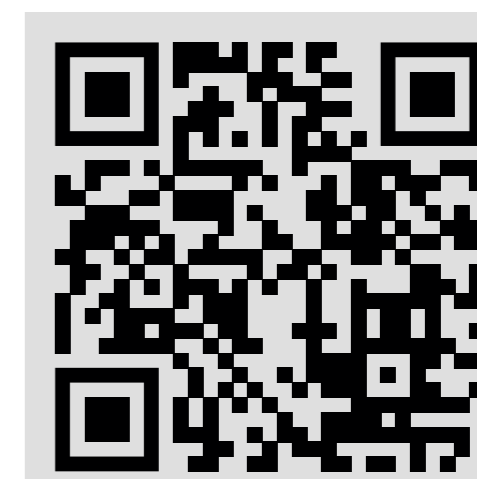
The proposals will bring about positive benefits to the town, but we realise that not everyone will be in favour of what is decided. Our engagement events help us understand the areas that are most liked, and those which are least liked, and we can reflect this feedback in the final designs, where budgets allow.

We've changed elements of phase one of the scheme as a result of your feedback, including the removal of the proposed roundabout at the Cheriton Road/ Cheriton Gardens/ Shorncliffe Road junction.

Once we have taken all your feedback into account, we can develop and cost the final plans for the scheme. There is a finite budget to deliver the project, and so some elements of the design may have to be pared back depending on the costs associated with their implementation.

We will engage with the public again in early 2024 when plans have been firmed up. We will also ask you about phase three of the project which will include designs for Bouverie Square, Sandgate Road and Guildhall Street.

You can see the feedback on the different elements of phase one on the website here www.folkestone-hythe.gov.uk/luf-public-engagement or scan the QR code on your smart phone or device.

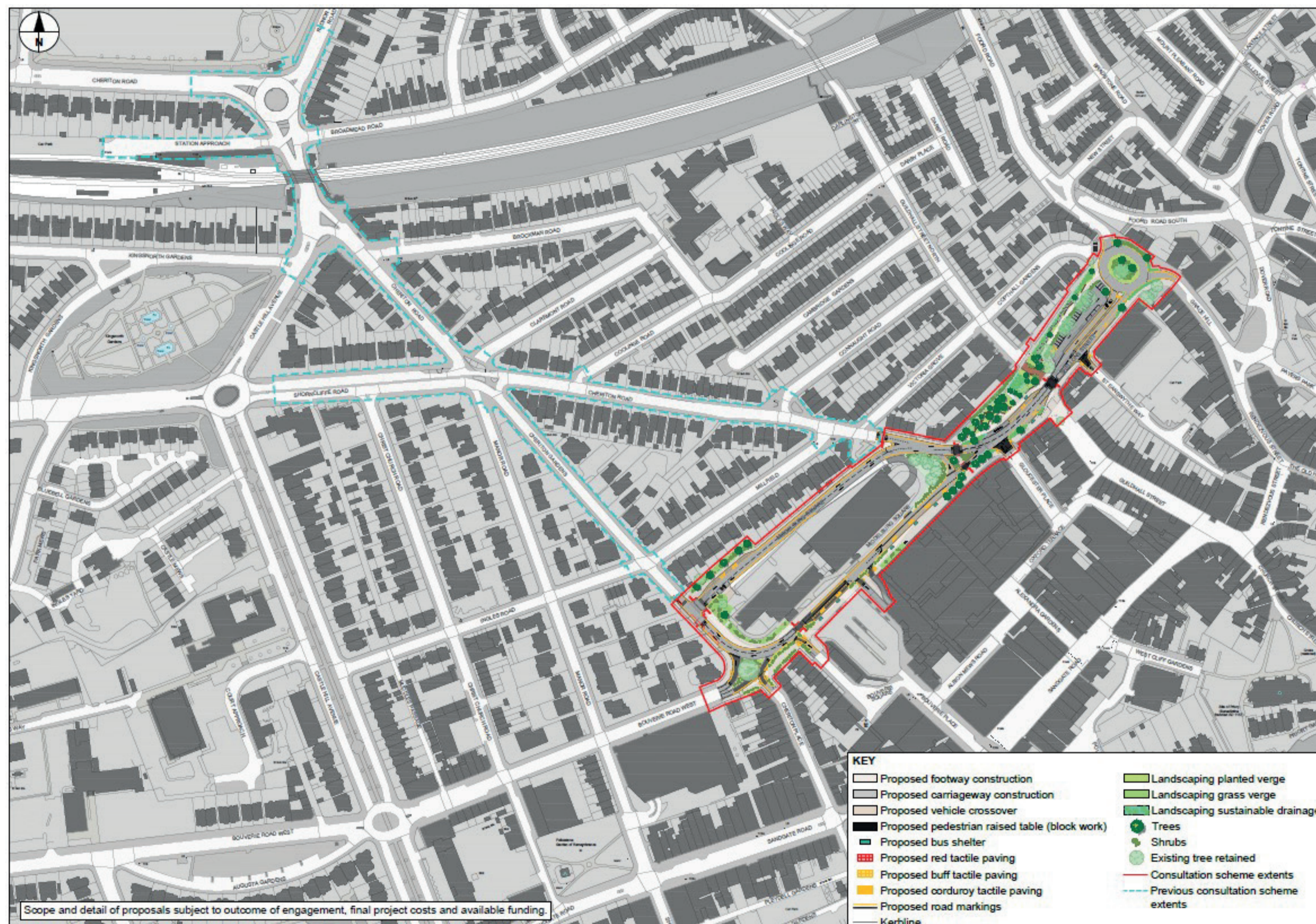




Funded by
UK Government

Folkestone – A Brighter Future Phase 2 overview

Phase one concentrates on the train station arrival and connections to the town centre, whilst phase two will focus on the town centre itself, including proposed alterations to the bus station. The area within the red line on the map below shows the phase two area, while the light blue dotted line represents the phase one boundary.



Phase two key elements include:

- Designing improvements to the road layout to improve all modes of travel and movement
- An aspiration to improve access to the town centre from Guildhall Street North by linking it with Guildhall Street, via a crossing on Shellons Street
- Landscaped green space alongside Shellons Street, on top of what is currently Foresters Way
- Implementing a more pedestrian-friendly bus station layout, running along Middelburg Square North and South
- Reinstating Bouverie Square as an arrival space and focal ‘green heart’ of the town
- Creating rain gardens, planting of new trees and implementing sustainable urban drainage



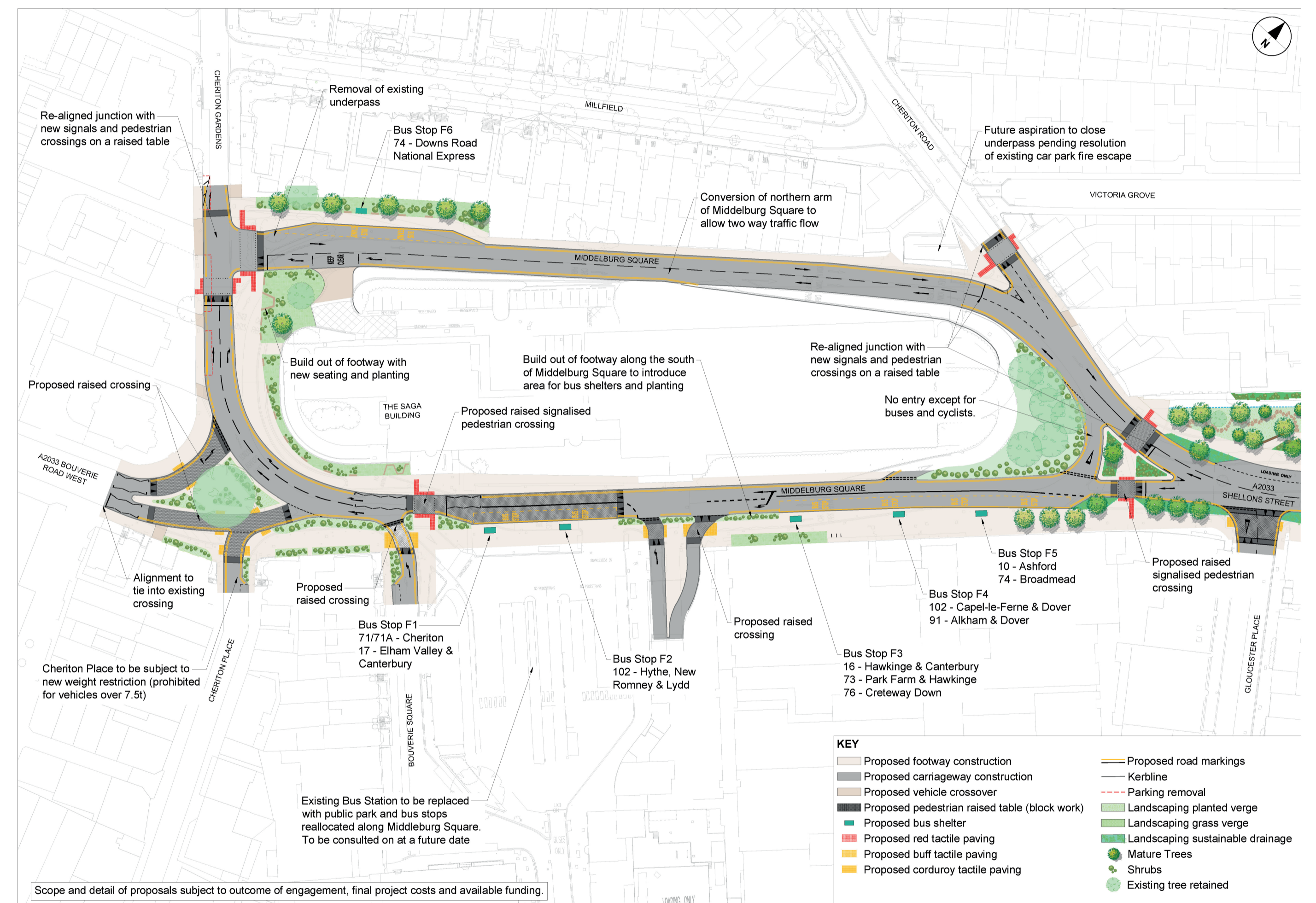
Funded by
UK Government

Folkestone – A Brighter Future

Phase 2: Middelburg Square

Focusing specifically on the Middelburg Square area of phase two, proposed improvements include:

- Replacing the bus station with a community area
- Providing five new bus stops along the southern arm of Middelburg Square, with one new bus stop on the northern arm of Middelburg Square
- Converting the northern arm of Middelburg Square to allow two-way traffic flow
- Introducing a ‘no entry except for buses and cyclists’ scheme at the junction of Cheriton Road and Middelburg Square
- Re-aligning the junction at Cheriton Road and Middelburg Square with new signals and pedestrian crossings on a raised table
- Building out the footway along the south of Middelburg Square to introduce an area for bus shelters and planting
- Implementing a new weight restriction in Cheriton Place stopping vehicles over 7.5 tons from using it
- Removing the underpass on the northern arm of Middelburg Square





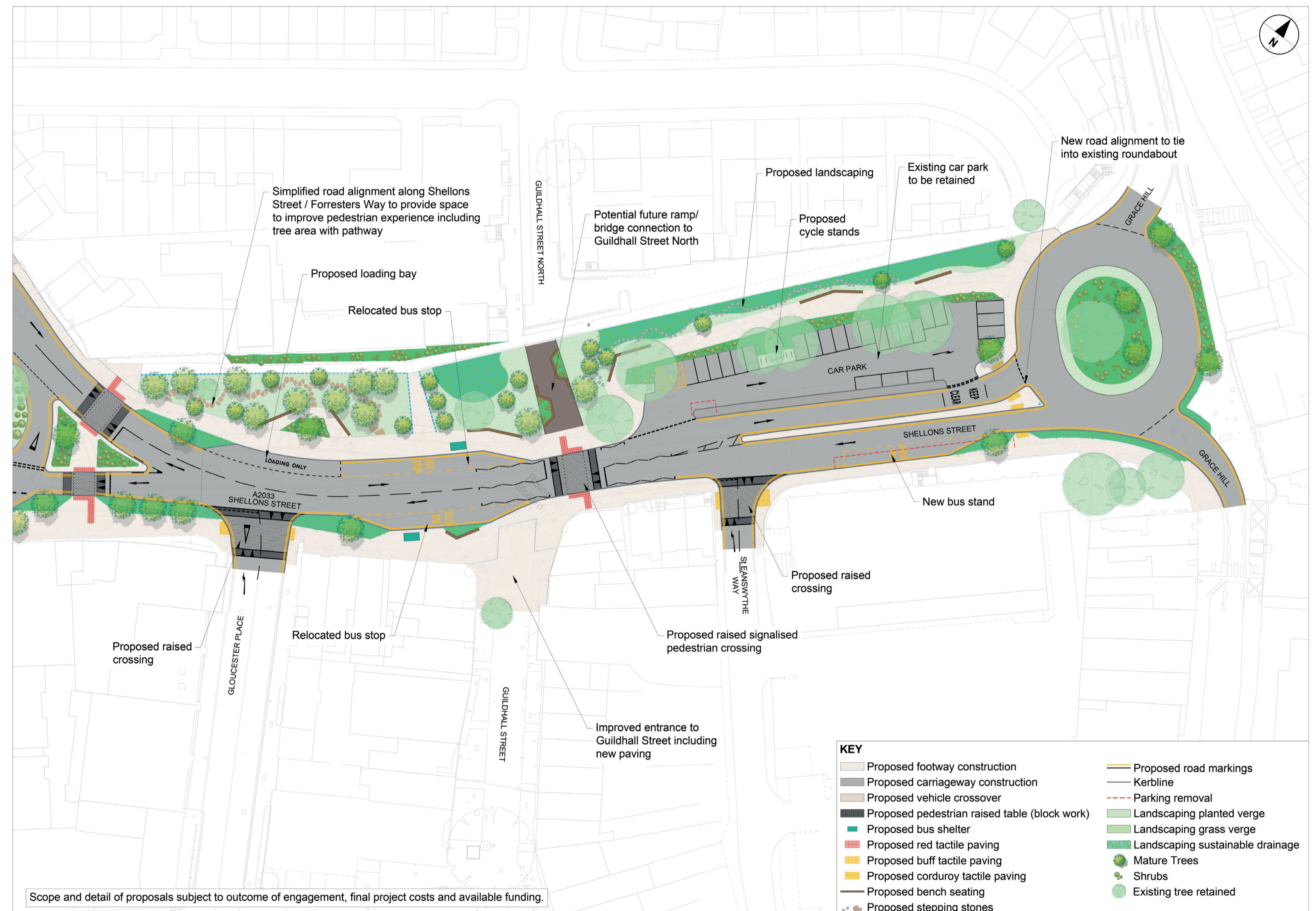
Funded by
UK Government

Folkestone – A Brighter Future

Phase 2: Shellons Street

Focusing specifically on the Shellons Street section of phase two, proposed improvements include:

- Simplifying the road alignment along Shellons Street / Foresters Way to provide wider pavements, more green space and improved accessibility
- Creating a connection to Guildhall Street North, with signalised pedestrian crossing
- Improving the entrance to Guildhall Street
- Relocating bus stops on either side of Shellons Street (south-western side) and provision of a new bus stand (north-eastern side)
- Building a raised pedestrian crossing across the junction of St Eanswythe Way
- Aligning road to tie-into the existing roundabout at the junction of Grace Hill and Shellons Street
- Retaining the existing car park and providing cycle stands
- Creating a loading bay to serve local businesses





Funded by
UK Government

Folkestone – A Brighter Future

Phase 2: Bouverie Square development of ideas

With the bus station moving to Middelburg Square, the intention is to create a community gathering space in Bouverie Square, which serves as a place for all. The indicative image (right), shows different uses that could be considered, so should not be seen as the final proposed design.

This could include a play area, multi-use event space and green, landscaped areas. The multi-use event space could be used to host seasonal events such as ice skating, outdoor cinema, art installations, community events and Christmas markets.

We'd love to hear your views on the proposed garden square, and what you think the space could be used for. We will engage with you further in the New Year with firmer proposals, taking into account your ideas. Please complete a survey to tell us what you think.



Tell us what you think!

Now you have been given an idea of the proposed changes and road layouts, we want to know what you think. Your views are important as you are the people who use this area.

As someone who knows Folkestone, lives, works or visits the area regularly, you are best placed to test / comment on the proposed scheme, so we are keen to get your views.

Please complete a survey which you can find on the table inside. If you would prefer, you can do this online by visiting the council website: www.folkestone-hythe.gov.uk/luf-public-engagement-Nov23 or by scanning the QR code on your smart phone or device.



We would like to know:

- What impact will these proposals have on you?
- What should be included within Bouverie Square?
- Will these proposals work for you as a pedestrian on your regular journeys?
- If you get the bus from this area, how will the changes impact your journey?
- Do you think the proposed location of the bus station will make it easier and safer for you?
- If you live in the area, will these proposals make the town centre a more inviting place?
- If you have caring responsibilities, how will the mobility of those you care for be impacted?
- If you have additional mobility requirements, do you think these changes will make things easier for you?
- Do you cycle through the area? Will these proposals make it safer and easier for you to use your bicycle to travel?
- Do you drive through this area by car? How will these proposals affect you?
- What other ideas do you have?
- If you own a business will these proposals help your business operation and make the town a more inviting place for your customers?



Funded by
UK Government

Next steps

Thank you for taking the time to visit today and for making your comments which will be taken into account during the detailed stage of the design of phase two.

If you haven't already, please complete a survey or do so online by visiting the council website:

www.folkestone-hythe.gov.uk/luf-public-engagement-Nov23

or by scanning the QR code on your smart phone or device.



You will also find the display board images and text on the website if you want to take another look or signpost friends and family towards them.

As we move into the delivery phase of Folkestone – A Brighter Future in 2024, we will publish more information on our website and through our social media channels

 /FolkestoneandHytheDC

 @fstonehythedc

 Folkestone and Hythe District Council

 @folkestonehythedc

If you have any questions about the project or require alternative formats of this information, email public.engagement@folkestone-hythe.gov.uk

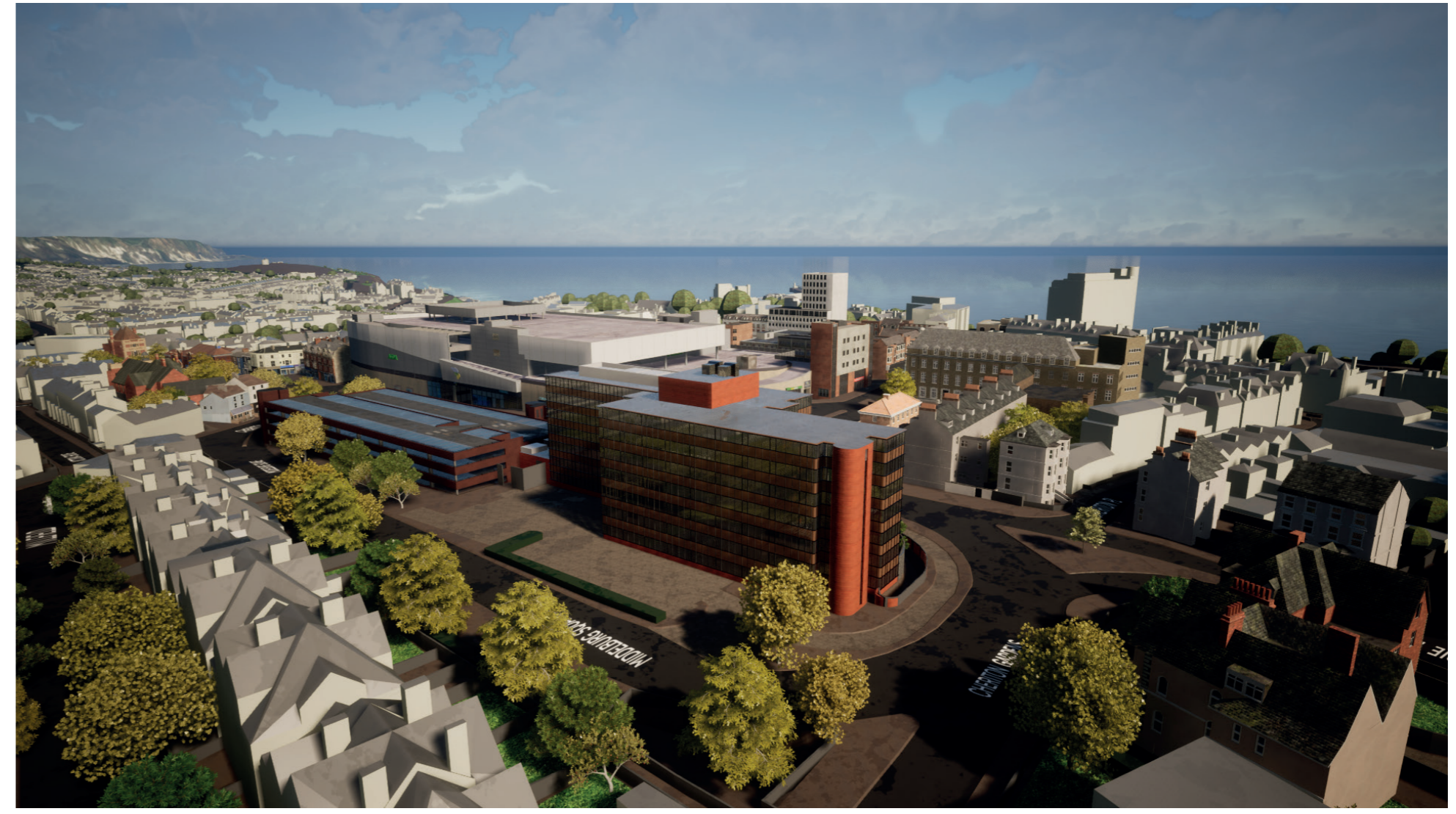


Funded by
UK Government

Our Partners



Digital Urban is a 3D digital design agency with a simple mission: to improve design and enhance engagement for built environment projects, using 3D modelling, gaming and immersive technology and videography.



At our core, we believe in creating inclusive and interactive urban environments. To achieve this, we focus on creating accessible 3D data, also known as Digital Twins; that can be used for various purposes. This approach fosters collaboration in urban design and provides software tools to engage with stakeholders effectively.

Additionally, we create virtual reality experiences and organise public engagement events to ensure that consultations reach as many people as possible, including those who are typically overlooked. With a friendly and pragmatic approach, we aim to involve everyone in shaping the future of our towns and cities.





Funded by
UK Government

Our Partners

themmeans

folkestone
fringe

Folkestone – A Brighter Future, Town Centre Activation

The means Ltd and Folkestone Fringe will be teaming up to design and coordinate a town centre programme of pilot projects and interventions to help bring public spaces to life, plus create opportunities for local people and businesses.

Both organisations have a track record of identifying under-realised potential in spaces and reinvigorating places socially and economically. The collaboration combines strategic planning and experience of best practice from other locations with local connections and implementation.

The essential revitalisation of Folkestone's Town Centre, currently the missing link, will create a place for bringing ideas for goods and services to fruition. Focus and innovation here are critical to making the whole town work for all its people.

The means is a 10 strong consultancy with 30 years expertise of economic development, strategy, feasibility, area-based management and evaluation that promote community involvement, wellbeing, economic recovery, sustainability and growth. We believe that through combining consultancy with programme implementation we bring a unique understanding to our clients.

Folkestone Fringe are a diverse and experienced freelance team who are embedded in the town, working for 20 years to develop Folkestone's cultural capital. Their activity has been a significant economic driver in the town's recent regeneration success. Alongside the creation of locally focused and nationally recognised music, environmental, mental health, women's rights and urbanism festivals, Folkestone Fringe were responsible for the initiation and successful development of Folkestone Harbour Arm.

Both organisations are committed to providing opportunities to residents for a more fulfilling, economic and socially active life. We agree people need to see themselves reflected in their environs if they are to take advantage of the pathways and opportunities that new investment in Folkestone's Town Centre can provide.



AECOM



POWERED BY
**LEVELLING
UP**



Funded by
UK Government

Our Partners



Creative Folkestone is proud to be in partnership with Folkestone & Hythe District Council on the Folkestone – A Brighter Future project. Visionary arts charity Creative Folkestone have a proven track record of applying art, cultural activity, and creativity as the sustainable driver of urban regeneration. This is exemplified by their leading role in the development of Folkestone’s Creative Quarter.

Creative Folkestone understands the transformative power of art, creativity and cultural placemaking within the urban context. The creative industries continue to grow and play a vital role in making Folkestone a great place to live, work, play and visit for all.

AECOM is a premier, fully integrated professional and technical services firm positioned to design, build, finance and operate infrastructure assets around the world for public and private-sector clients. We are the world’s trusted infrastructure consulting firm. We are a leader in all of the key markets that we serve — including transportation, facilities, environmental, energy, oil and gas, water, high-rise buildings and government — and provide a blend of global reach, local knowledge, innovation and technical excellence in delivering customised and creative solutions that meet the needs of our clients’ project.

We partner with those who want to make a positive difference as we lead the change toward a more sustainable and equitable future. By bringing together the best people, ideas and technical expertise, we turn their ambitions into action.

Our clients trust us to solve their most complex challenges. Our teams are driven by a common purpose to deliver a better world through our unrivaled technical and digital expertise, a culture of equity, diversity and inclusion, and a commitment to environmental, social and governance priorities.

We believe infrastructure creates opportunity for everyone – uplifting communities, improving access and sustaining our planet. We are one team driven by a common purpose to deliver a better world.



