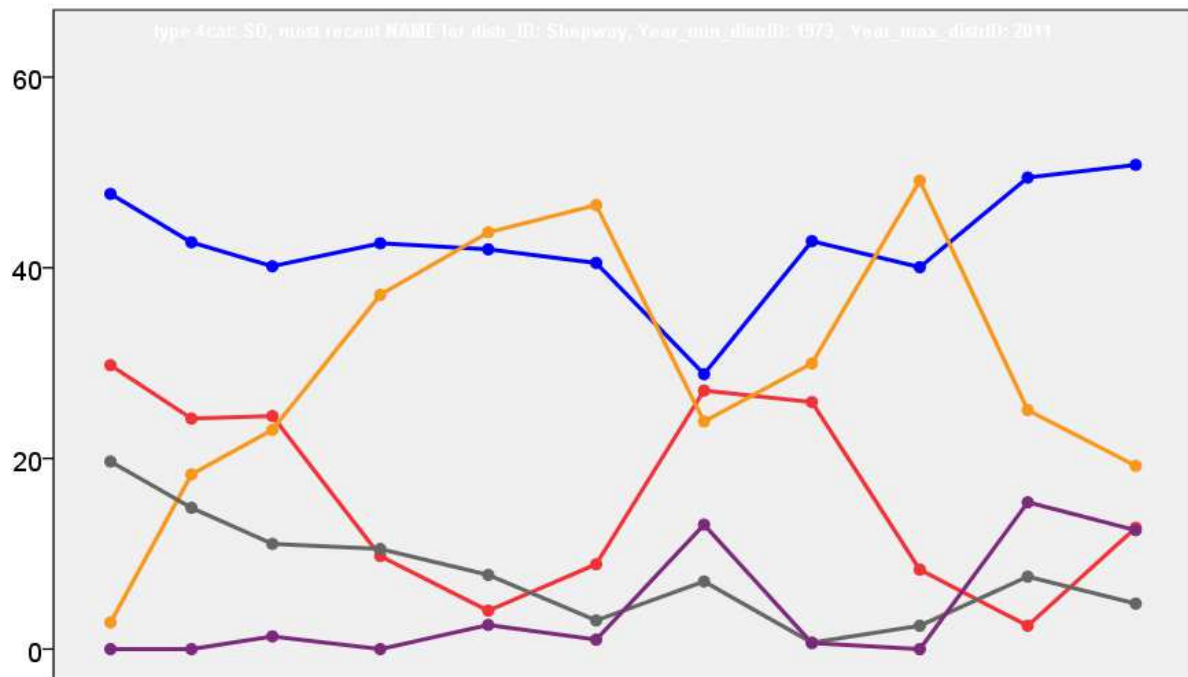


Shepway District Council Election Results 1973-2011



Colin Rallings and Michael Thrasher
The Elections Centre
Plymouth University

The information contained in this report has been obtained from a number of sources. Election results from the immediate post-reorganisation period were painstakingly collected by Alan Willis largely, although not exclusively, from local newspaper reports. From the mid-1980s onwards the results have been obtained from each local authority by the Elections Centre. The data are stored in a database designed by Lawrence Ware and maintained by Brian Cheal and others at Plymouth University. Despite our best efforts some information remains elusive whilst we accept that some errors are likely to remain. Notice of any mistakes should be sent to elections@plymouth.ac.uk. The results sequence can be kept up to date by purchasing copies of the annual Local Elections Handbook, details of which can be obtained by contacting the email address above.

Front cover: the graph shows the distribution of percentage vote shares over the period covered by the results. The lines reflect the colours traditionally used by the three main parties. The grey line is the share obtained by Independent candidates while the purple line groups together the vote shares for all other parties.

Rear cover: the top graph shows the percentage share of council seats for the main parties as well as those won by Independents and other parties. The lines take account of any by-election changes (but not those resulting from elected councillors switching party allegiance) as well as the transfers of seats during the main round of local election.

The lower graph shows for each main round of local elections the overall percentage turnout (solid line), the percentage of women candidates standing at (dotted line) and the percentage of women among those elected (hashed line).

Shepway - 1973

Dymchurch & Burmarsh (2776)²

		vote	share
Deighton A.	Ind	498	32.9
Preston T.	Lib	430	28.4
Brown D.	Con	399	26.4
Swift E. Ms.	Con	306	-
Wood F.	Lab	185	12.2
Wood M.	Lab	125	-

Turnout 35.0 4.5

Elham (1125)

		vote	share
Palmer J.	Con	298	57.1
Bartley D.	Ind	224	42.9

Turnout 46.4 14.2

Hawkinge & Paddlesworth (1183)

		vote	share
Thompson J.	Ind	286	58.7
Hagger R.	Lab	201	41.3

Turnout 41.2 17.5

Hythe East (3041)²

		vote	share
Pearson J.	Con	871	78.5
Pine W. Ms.	Con	803	-
Stroud C. Ms.	Lab	239	21.5

Turnout 32.5 56.9

Hythe North (2210)²

		vote	share
Capon C.	Con	944	73.3
Medlicott J.	Con	795	-
Henderson A.	Ind	343	26.7

Turnout 47.1 46.7

Hythe South (1612)²

		vote	share
Setterfield J.	Con	555	67.9
Periam E.	Con	500	-
Cross D.	Lab	262	32.1

Turnout 40.8 35.9

Hythe West (2943)²

		vote	share
Bond P.	Lab	782	47.9
Stroud P.	Lab	694	-
Trice R.	Con	610	37.4
Woods B.	Con	455	-
De Bage E. Ms.	Lib	240	14.7

Turnout 47.3 10.5

Lydd (3403)³

		vote	share
Whiting H.	Con	510	37.5
Burrage A.	Con	508	-
Thompson K.	Lab	498	36.6
Macneil C.	Lab	357	-
Martin S.	Lab	355	-
Prior D.	Ind	351	25.8
Durrant G. Ms.	Ind	304	-
Brown G.	Con	287	-
Pope E.	Ind	229	-

Turnout 33.3 0.9

Lympne & Stanford (1137)

		vote	share
Margary H.	Con	0	0.0

Turnout 0.0 0.0

New Romney (2828)³

		vote	share
Poll C.	Con	652	43.1
Raymond F.	Con	623	-
Collins R.	Con	552	-
Ramsden E. Ms.	Lab	441	29.2
Ellis D.	Ind	419	27.7
Roseaman E.	Lab	265	-
Beadle J.	Lab	258	-
Croft E. Ms.	Ind	197	-

Turnout 40.2 14.0

No. 1 (Folkestone: Central) (3185)³

		vote	share
Godden A.	Con	365	40.5
Hamer E.	Con	322	-
Allan M.	Con	309	-
Cruikshanks C.	Ind	274	30.4
King B. Ms.	Lab	263	29.2

Turnout 16.0 10.1

No. 2 (Folkestone: East) (3197)³

		vote	share
Neame G.	Lab	711	73.5
Sainsbury J.	Lab	678	-
King J.	Lab	646	-
Harold E. Ms.	Con	257	26.5
Saxby J.	Con	254	-
Lambe E.	Con	249	-

Turnout 28.6 46.9

No. 24 (Newchurch & St. Mary In The Marsh) (1742)²

		vote	share
Scrivener F.	Ind	283	39.2
Webster F.	Con	276	38.2
Hyde J.	Con	201	-
Read R.	Lab	163	22.6
Dixon H.	Lab	149	-

Turnout 30.8 1.0

No. 25 (Marsh) (962)

		vote	share
Apps J. Ms.	Ind	291	65.5
O'Conner N.	Ind	91	20.5
Forwood C.	Con	62	14.0

Turnout 46.2 45.0

No. 3 (Folkestone: Foord) (3040)³

		vote	share
Johnson H.	Lab	718	78.5
Conybeare C.	Lab	645	-
Peerless D.	Lab	633	-
Thomas M. Ms.	Con	197	21.5
Ellender C.	Con	192	-
Banfield G. Ms.	Con	179	-

Turnout 28.1 56.9

No. 4 (Folkestone: Harbour) (3497)³

		vote	share
Lloyd C.	Con	686	49.3
Thomas G.	Con	678	-
Harrold L.	Con	677	-
Phillips W. Ms.	Lab	630	45.3
Gee D.	Lab	520	-
Claydon D. Ms.	Lab	519	-
Button H.	Ind	76	5.5

Turnout 36.1 4.0

No. 5 (Folkestone: Park) (4525)³

		vote	share
Moody D. Ms.	Con	857	56.0
Setterfield D.	Con	805	-
Brown D.	Con	751	-
Brown F.	Lab	422	27.6
Gee D. Ms.	Lab	309	-
Briggs C.	Ind	250	16.4

Turnout 25.0 28.4

No. 6 (Folkestone: Cheriton) (3775)³

		vote	share
Sainsbury J.	Lab	818	57.0
Stockham F.	Lab	789	-
Wright J. Ms.	Lab	764	-
Woodward R.	Con	539	37.6
Moore A.	Con	495	-
Silk F.	Con	453	-
Blundell F.	Ind	78	5.4

Turnout 34.8 19.4

No. 7 (Folkestone: Harvey) (3442)³

		vote	share
Harris W.	Con	998	90.6
Hazell G.	Con	989	-
Furieux F.	Con	971	-
Hughes B. Ms.	Lab	104	9.4
Care C.	Lab	90	-

Turnout 30.5 81.1

No. 8 (Folkestone: Morehall) (3644)³

		vote	share
Poole E.	Con	913	78.2
Jacques J.	Con	854	-
Jacques G. Ms.	Con	814	-
Sainsbury K. Ms.	Lab	254	21.8
Neame E. Ms.	Lab	228	-

Turnout 28.0 56.5

No. 9 (Folkestone: Sandgate) (5209)³

		vote	share
Banfield J.	Con	1,035	84.4
Cook J.	Con	985	-
Loxton W.	Con	968	-
Care J. Ms.	Lab	192	15.6
Jeffery R. Ms.	Lab	162	-

Turnout 21.4 68.7

Saltwood & Newington (948)

		vote	share
Hopkins M.	Con	0	0.0

Turnout 0.0 0.0

Sellindge (1186)

		vote	share
Gilbert D. Ms.	Ind	0	0.0

Turnout 0.0 0.0

Stone Street (2780)²

		vote	share
Everist H.	Ind	662	47.1
Tory P.	Ind	480	-
Drake-			
Brockman M. Ms.	Con	463	32.9
Fletcher E. Ms.	Con	392	-
Martin A. Ms.	Lab	281	20.0
Smith S. Ms.	Lab	256	-

Turnout 45.6 14.2

Swingfield & Acrise (1087)

		vote	share
King G.	Ind	339	55.8
Gregory G.	Ind	145	23.8
Roberts C. Ms.	Ind	124	20.4

Turnout 55.9 31.9

Shepway - 1976

Dymchurch & Burmarsh (2863)²

		vote	share
Preston T.	Lib	830	50.4
Deighton A.	Ind	817	49.6
Wood F.	Ind	341	-

Turnout 42.6 0.8

Elham (1065)			
		vote	share
Palmer J.	Con	0	0.0
Turnout		0.0	0.0
Hawkinge & Paddlesworth (1172)			
		vote	share
Hagger R.	Con	0	0.0
Turnout		0.0	0.0
Hythe East (3045) ²			
		vote	share
Pearson J.	Con	986	75.3
Pine W. Ms.	Con	949	-
Cross D.	Lab	324	24.7
Vincent W.	Lab	289	-
Turnout		43.9	50.5
Hythe North (2265) ²			
		vote	share
Capon C.	Con	0	-
Medlicott J.	Con	0	0.0
Turnout		0.0	0.0
Hythe South (1622) ²			
		vote	share
Setterfield J.	Con	563	74.9
Hosgood J.	Con	522	-
East E. Ms.	Lab	189	25.1
Turnout		44.6	49.7
Hythe West (2957) ²			
		vote	share
Trice R.	Con	827	52.1
Bond P.	Lab	761	47.9
Woods B.	Con	704	-
Mortimer K.	Lab	574	-
Turnout		51.7	4.2
Lydd (3530) ³			
		vote	share
Whiting H.	Con	718	41.8
Wood G.	Lib	691	40.3
Hall K. Ms.	Lib	545	-
Macneil C.	Lab	307	17.9
Selsden R.	Lab	304	-
Turnout		37.7	1.6
Lympe & Stanford (1153)			
		vote	share
Margary H.	Con	0	0.0
Turnout		0.0	0.0
New Romney (3133) ³			
		vote	share
Raymond F.	Con	787	49.8
Poll C.	Con	700	-
Cicccone N.	Con	645	-
Webb A.	Lib	453	28.7
Martin S.	Lab	341	21.6
Turnout		39.7	21.1
No. 1 (Folkestone: Central) (2871) ³			
		vote	share
Nelhams L.	Con	0	0.0
Allan M.	Con	0	-
Hamer E.	Con	0	-
Turnout		0.0	0.0
No. 2 (Folkestone: East) (3122) ³			
		vote	share
Sainsbury J.	Lab	746	66.8
King J.	Lab	684	-
Phillips W. Ms.	Lab	681	-
Pratt D.	Con	371	33.2
Harrold E. Ms.	Con	358	-
Turnout		37.1	33.6

No. 24 (Newchurch & St. Mary In The Marsh) (1916) ²			
		vote	share
Scrivener F.	Ind	612	64.1
Barry P.	Ind	458	-
Forwood C.	Con	343	35.9
Turnout		45.7	28.2
No. 25 (Marsh) (934)			
		vote	share
Apps J. Ms.	Ind	0	0.0
Turnout		0.0	0.0
No. 3 (Folkestone: Foord) (2922) ³			
		vote	share
Johnson H.	Lab	661	46.4
Coneybeare C.	Lab	538	-
Copping B.	Lib	454	31.9
Parsons M.	Lab	447	-
Thomas M. Ms.	Con	309	21.7
Lloyd M. Ms.	Con	294	-
Turnout		37.9	14.5
No. 4 (Folkestone: Harbour) (3626) ³			
		vote	share
Harrold L.	Con	787	58.8
Thomas G.	Con	767	-
Lloyd C.	Con	738	-
Harrison F.	Lab	552	41.2
Ferguson J.	Lab	540	-
Langley A.	Lab	524	-
Turnout		38.7	17.6
No. 5 (Folkestone: Park) (5022) ³			
		vote	share
Moody D. Ms.	Con	1,147	57.0
Allan I. Ms.	Con	1,037	-
Setterfield D.	Con	1,005	-
Lythgoe C. Ms.	Lib	865	43.0
Turnout		36.6	14.0
No. 6 (Folkestone: Cheriton) (3785) ³			
		vote	share
Sainsbury J.	Lab	797	54.3
Stockham F.	Lab	755	-
Martin A. Ms.	Lab	694	-
Woodward R.	Con	671	45.7
Woodgate D.	Con	671	-
Ellender C.	Con	651	-
Turnout		41.8	8.6
No. 7 (Folkestone: Harvey) (3290) ³			
		vote	share
Harris W.	Con	986	73.5
Hallett J.	Con	983	-
Carter P.	Con	942	-
Waddilove G.	Lib	355	26.5
Turnout		41.0	47.1
No. 8 (Folkestone: Morehall) (3648) ³			
		vote	share
Poole E.	Con	0	0.0
Jacques J.	Con	0	-
Jacques G. Ms.	Con	0	-
Turnout		0.0	0.0
No. 9 (Folkestone: Sandgate) (5373) ³			
		vote	share
Eastwick O.	Con	0	-
Loxton W.	Con	0	0.0
Finch N.	Con	0	-
Turnout		0.0	0.0
Saltwood & Newington (929)			
		vote	share
Hopkins M.	Con	0	0.0
Turnout		0.0	0.0

Sellindge (1231)			
		vote	share
Gilbert D. Ms.	Ind	431	75.9
Turton F.	Lab	137	24.1
Turnout		46.1	51.8
Stone Street (2692) ²			
		vote	share
Everist H.	Ind	870	100.0
Tory P.	Ind	868	-
Nelson D.	Ind	220	-
Turnout		39.8	84.3
Swingfield & Acrise (1047)			
		vote	share
King G.	Ind	0	0.0
Turnout		0.0	0.0
Shepway - 1979			
Dymchurch & Burmarsh (2952) ³			
		vote	share
Preston T.	Lib	0	0.0
Deighton A.	Ind	0	0.0
Snell J.	Con	0	0.0
Turnout		0.0	0.0
Elham (1052)			
		vote	share
Palmer J.	Con	0	0.0
Turnout		0.0	0.0
Folkestone Central (2976) ³			
		vote	share
Nelhams L.	Con	0	0.0
Collier J.	Con	0	-
Allan M.	Con	0	-
Turnout		0.0	0.0
Folkestone Cheriton (3997) ³			
		vote	share
Sainsbury J.	Lab	1,546	56.8
Stockham F.	Lab	1,368	-
Martin A. Ms.	Lab	1,279	-
Woodgate D.	Con	1,177	43.2
Burt R. Ms.	Con	1,134	-
Holley K.	Con	1,098	-
Turnout		68.1	13.6
Folkestone East (3628) ³			
		vote	share
Neame G.	Lab	1,300	50.1
Sainsbury J.	Lab	1,295	-
Phillips W. Ms.	Lab	1,174	-
Bowers S.	Con	890	34.3
King J.	Ind Lab	407	15.7
Turnout		71.6	15.8
Folkestone Foord (4024) ³			
		vote	share
Copping B.	Lib	1,308	41.5
Conybeare C.	Lab	1,138	36.1
Marsh P.	Lib	1,097	-
Wrigley J.	Lab	816	-
Huntley E. Ms.	Lab	813	-
Cox J.	Con	708	22.4
Parris R. Ms.	Con	578	-
Turnout		78.4	5.4
Folkestone Harbour (4012) ³			
		vote	share
Harrold L.	Con	1,404	53.1
Lloyd C.	Con	1,343	-
Thomas G.	Con	1,339	-
Sainsbury J. Ms.	Lab	1,238	46.9
Turnout		65.9	6.3

Folkestone Harvey (3876) ³			
		vote	share
Hallett J.	Con	0	-
Carter P.	Con	0	-
Harris W.	Con	0	0.0
Turnout		0.0	0.0

Folkestone Morehall (3884) ³			
		vote	share
Poole E.	Con	1,519	41.1
Blythe D.	Lib	1,264	34.2
Jacques J.	Con	1,235	-
Jacques G. Ms.	Con	1,223	-
Lawrence J.	Lab	915	24.7
Delivett G.	Lab	807	-
Turnout		95.2	6.9

Folkestone Park (4462) ³			
		vote	share
Moody D. Ms.	Con	1,748	55.4
Allan I. Ms.	Con	1,744	-
Setterfield D.	Con	1,514	-
Patterson G.	Lib	1,409	44.6
Turnout		70.8	10.7

Folkestone Sandgate (2912) ³			
		vote	share
Eastwick O.	Con	0	-
Hamer E.	Con	0	-
Pratt D.	Con	0	0.0
Turnout		0.0	0.0

Hawkinge & Paddlesworth (1255)			
		vote	share
Hudson K.	Ind	523	54.1
Hagger R.	Con	444	45.9
Turnout		77.1	8.2

Hythe East (3112) ³			
		vote	share
Pine W. Ms.	Con	0	0.0
Bailey A.	Con	0	-
Bench W.	Con	0	-
Turnout		0.0	0.0

Hythe North (2526) ²			
		vote	share
Medlicott J.	Con	0	0.0
Capon C.	Con	0	-
Turnout		0.0	0.0

Hythe South (1683) ²			
		vote	share
Hosgood J.	Con	0	-
Setterfield J.	Con	0	0.0
Turnout		0.0	0.0

Hythe West (2948) ²			
		vote	share
Trice R.	Con	1,366	67.7
Woods B.	Con	1,149	-
Selden R.	Lab	651	32.3
Turnout		68.4	35.4

Lydd (3678) ³			
		vote	share
Wood G.	Lib	1,404	45.9
Whiting H.	Con	987	32.3
Dearden J.	Con	968	-
Hall K. Ms.	Lib	893	-
Brown P.	Con	765	-
Clarke R.	Lab	667	21.8
Turnout		83.1	13.6

Lympne & Stanford (1210)			
		vote	share
Margary H.	Con	0	0.0
Turnout		0.0	0.0

Marsh (1131)			
		vote	share
Apps J. Ms.	Ind	739	81.7
Forwood C.	Ind	166	18.3
Turnout		80.0	63.3

New Romney (3448) ³			
		vote	share
Egan A.	Lib	1,626	63.0
Raymond F.	Con	957	37.0
Poll C.	Con	889	-
Bolton S.	Con	844	-
Turnout		74.9	25.9

Saltwood & Newington (946)			
		vote	share
Payne W.	Con	0	0.0
Turnout		0.0	0.0

Sellindge (1235)			
		vote	share
Gilbert D. Ms.	Con	0	0.0
Turnout		0.0	0.0

St. Mary In The Marsh (2147) ²			
		vote	share
Barry P. Ms.	Ind	0	-
Scrivener F.	Ind	0	0.0
Turnout		0.0	0.0

Stone Street (2815) ²			
		vote	share
Everist H.	Ind	1,429	67.7
Service H.	Ind	1,167	-
Auld C.	Con	681	32.3
Southorn H.	Con	491	-
Turnout		75.0	35.5

Swingfield & Acrise (1087)			
		vote	share
King G.	Ind	507	58.5
Tearle C.	Con	360	41.5
Turnout		79.8	17.0

Shepway - 1983

Dymchurch & Burmarsh (2894) ³			
		vote	share
Preston T.	Lib/SDP	966	38.1
Deighton T.	Ind	716	28.2
Copley D.	Con	587	23.1
Snell J.	Con	570	-
Kewer J. Ms.	Lib/SDP	514	-
Piper L. Ms.	Lab	268	10.6
Turnout		48.9	9.9

Elham (1063)			
		vote	share
Bagley R.	Con	437	72.1
Wootton R.	Lib/SDP	169	27.9
Turnout		57.0	44.2

Folkestone Central (2748) ³			
		vote	share
Luck M.	Lib/SDP	481	53.0
Jarman J.	Lib/SDP	448	-
Coles-Watson R.	Lib/SDP	447	-
Allan M.	Con	427	47.0
Cox J. Ms.	Con	425	-
Nelhams L.	Con	381	-
Turnout		34.3	5.9

Folkestone Cheriton (4099) ³			
		vote	share
Bowlen K.	Lib/SDP	934	44.9
Cufley L. Ms.	Lib/SDP	853	-
Crowhurst D.	Con	738	35.5
Telfer D.	Con	710	-
Sparkes A.	Con	590	-
Woodward C.	Lab	409	19.7
Martin A. Ms.	Lab	378	-
Fincham P. Ms.	Lab	366	-
Turnout		50.2	9.4

Folkestone East (4292) ³			
		vote	share
Collishaw E. Ms.	Lib/SDP	551	37.9
Neame G.	Lab	478	32.9
Sainsbury J.	Lab	447	-
Stephens J.	Lab	354	-
Bowers S.	Con	313	21.5
Nunn D.	Ind	113	7.8
Turnout		33.9	5.0

Folkestone Foord (3746) ³			
		vote	share
Copping B.	Lib/SDP	1,127	56.4
Marsh P.	Lib/SDP	971	-
Stainer M.	Con	438	21.9
Coneybeare C.	Lab	433	21.7
Dryland T.	Lab	371	-
Turnout		42.4	34.5

Folkestone Harbour (3754) ³			
		vote	share
Harrold L.	Con	648	39.3
Lloyd C.	Con	619	-
Thomas G.	Con	615	-
Barrett C.	Lib/SDP	544	33.0
Pickering L. Ms.	Lib/SDP	499	-
Sainsbury J. Ms.	Lab	455	27.6
Wrigley J.	Lab	418	-
Neame E. Ms.	Lab	398	-
Turnout		40.0	6.3

Folkestone Harvey (3749) ³			
		vote	share
Stainer M.	Con	1,038	50.3
Hallett J.	Con	1,028	-
Carter P.	Con	939	-
Cuthbert Brown G.	Ind	616	29.8
Miller D.	Lib/SDP	410	19.9
Gurden B.	Lib/SDP	386	-
Turnout		46.5	20.4

Folkestone Morehall (5096) ³			
		vote	share
Poole P.	Con	1,069	41.2
Blythe D.	Lib/SDP	1,022	39.4
Jones M. Ms.	Lib/SDP	925	-
Jacques J.	Con	805	-
Jacques G. Ms.	Con	720	-
Lawrence J.	Lab	503	19.4
Turnout		50.9	1.8

Folkestone Park (4948) ³			
		vote	share
Allan I. Ms.	Con	925	44.3
Moody D. Ms.	Con	925	-
Cox J.	Lib/SDP	890	42.6
Setterfield D.	Con	821	-
Simmons R.	Lab	273	13.1
Turnout		42.2	1.7

Folkestone Sandgate (2884) ³			
		vote	share
Hamer E.	Con	691	51.8
Pratt D.	Con	624	-
Poll C.	Con	575	-
Ovenden P.	Lib/SDP	495	37.1
Button H.	Ind	149	11.2
Turnout		41.9	14.7

Hawkinge & Paddlesworth (1590)			
		vote	share
Hudson K.	Ind	393	69.4
Smith T.	Con	173	30.6

Turnout 35.6 38.9

Hythe East (2973) ³			
		vote	share
Bailey A.	Con	819	64.9
Bailey E. Ms.	Con	798	-
Bench B.	Con	792	-
Stanton A.	Lib/SDP	442	35.1

Turnout 43.5 29.9

Hythe North (3388) ²			
		vote	share
Capon C.	Con	942	76.9
Parris R. Ms.	Con	672	-
Hardy-King R.	Lib/SDP	283	23.1

Turnout 56.0 53.8

Hythe South (2025) ²			
		vote	share
Setterfield J.	Con	685	67.2
Hosgood J.	Con	619	-
Mackie J.	Lib/SDP	334	32.8
Tyson J. Ms.	Lib/SDP	282	-

Turnout 46.2 34.4

Hythe West (2919) ²			
		vote	share
Hogg T.	Lib/SDP	705	50.5
Woods B.	Con	690	49.5
Trice R.	Con	616	-

Turnout 46.0 1.1

Lydd (3650) ³			
		vote	share
Wood G.	Lib/SDP	911	53.0
Thompson K.	Lib/SDP	640	-
Dearden J.	Con	598	34.8
Paine B. Ms.	Lib/SDP	586	-
Whiting H.	Con	552	-
May D.	Con	455	-
Southerden P.	Lab	211	12.3
Day R.	Lab	210	-
Leech F.	Lab	186	-

Turnout 47.0 18.2

Lympne & Stanford (1158)			
		vote	share
Margary H.	Con	404	71.6
Pickering P.	Lib/SDP	160	28.4

Turnout 48.7 43.3

Marsh (1244)			
		vote	share
Apps J. Ms.	Ind	0	0.0

Turnout 0.0 0.0

New Romney (3656) ³			
		vote	share
Raymond F.	Con	845	47.2
Finn-Kelcey G.	Con	817	-
Egan A.	Lib/SDP	688	38.4
Cheese S. Ms.	Lib/SDP	610	-
Gardiner J.	Lib/SDP	540	-
Collins R.	Lab	258	14.4
Gillett H.	Lab	230	-
Cirket A.	Lab	214	-

Turnout 45.3 8.8

Saltwood & Newington (916)			
		vote	share
Payne W.	Con	386	72.1
Horstrup S. Ms.	Lib/SDP	149	27.9

Turnout 58.4 44.3

Sellindge (1193)			
		vote	share
Gilbert D. Ms.	Con	465	75.9
Wootton E. Ms.	Lib/SDP	148	24.1

Turnout 51.4 51.7

St. Mary In The Marsh (2371) ²			
		vote	share
Scrivener F.	Lib/SDP	626	57.8
Else H.	Ind	457	42.2
Barry P. Ms.	Ind	418	-
Savage M.	Lib/SDP	415	-

Turnout 46.7 15.6

Stone Street (2760) ²			
		vote	share
Everist H.	Ind	777	38.2
Service H.	Con	757	37.3
Budd B.	Lib/SDP	498	24.5
Mills A. Ms.	Lib/SDP	344	-

Turnout 49.6 1.0

Swingfield & Acrise (1053)			
		vote	share
King G.	Ind	321	53.6
Tearle C.	Con	278	46.4

Turnout 56.9 7.2

Shepway - 1987

Dymchurch & Burmarsh (2837) ³			
		vote	share
Preston T.	Lib/SDP	1,099	42.1
Deighton A.	Ind	592	22.7
Wealend R. Ms.	Con	573	22.0
Hope E. Ms.	Lib/SDP	538	-
Elliott J. Ms.	Lib/SDP	519	-
Holmes J. Ms.	Ind	332	-
Scrivener F.	No By Pass	187	7.2
Cringle J.	Lab	158	6.1

Turnout 92.0 19.4

Elham (1055)			
		vote	share
Blain D.	Con	361	58.6
Willatts W.	Lib/SDP	255	41.4

Turnout 58.4 17.2

Folkestone Central (2520) ³			
		vote	share
Luck M.	Lib/SDP	611	59.6
Barrett C.	Lib/SDP	588	-
Simpson S. Ms.	Lib/SDP	577	-
Jones W.	Con	414	40.4
Nelhams L.	Con	387	-
Oliver A.	Con	385	-

Turnout 40.7 19.2

Folkestone Cheriton (4201) ³			
		vote	share
Bowden K.	Lib/SDP	1,494	60.3
Cufley L. Ms.	Lib/SDP	1,245	-
Gane P.	Lib/SDP	1,057	-
Crowhurst D.	Con	885	35.7
Llewellyn-Davis P. Ms.	Con	685	-
Smedley E.	Con	592	-
Methven K. Ms.	ACTS	98	4.0
Wratten R.	ACTS	88	-

Turnout 59.0 24.6

Folkestone East (2936) ³			
		vote	share
Collishaw M. Ms.	Lib/SDP	874	64.5
Brown R.	Lib/SDP	768	-
Colquhoun G. Ms.	Lib/SDP	743	-
Price M.	Lab	245	18.1
Castle V. Ms.	Con	236	17.4
Cinelli S. Ms.	Con	220	-

Turnout 46.2 46.4

Folkestone Foord (3469) ³			
		vote	share
Copping B.	Lib/SDP	1,123	68.1
Marsh P.	Lib/SDP	1,034	-
Green J. Ms.	Lib/SDP	954	-
Martin P.	Con	291	17.7
Adams L.	Lab	234	14.2
Armstrong N.	Lab	221	-

Turnout 47.5 50.5

Folkestone Harbour (3496) ³			
		vote	share
Sinclair R.	Lib/SDP	816	56.3
Horner V. Ms.	Lib/SDP	737	-
Moorin G. Ms.	Lib/SDP	711	-
Guilding E. Ms.	Con	482	33.2
Smith P.	Con	432	-
Waghorne T.	Con	404	-
Nunn D.	ACT	152	10.5

Turnout 41.5 23.0

Folkestone Harvey (3622) ³			
		vote	share
Battrick M.	Con	1,160	45.0
Rumbold A.	Con	1,024	-
Love R.	Con	1,001	-
Cuthbert-Brown G. Ms.	Ind	781	30.3
Miller D.	Lib/SDP	638	24.7

Turnout 71.2 14.7

Folkestone Morehall (3646) ³			
		vote	share
Jones M. Ms.	Lib/SDP	1,093	55.4
Rees-Evans D. Ms.	Lib/SDP	1,052	-
Shakespeare D.	Lib/SDP	1,042	-
Poole E.	Con	881	44.6
Rolfe B.	Con	763	-
Jacques D.	Con	701	-

Turnout 54.1 10.7

Folkestone Park (4374) ³			
		vote	share
Cox J.	Lib/SDP	1,179	48.2
Barnes M. Ms.	Con	1,094	44.8
Everett R. Ms.	Lib/SDP	1,080	-
Ovenden N. Ms.	Lib/SDP	1,071	-
Smith T.	Con	1,006	-
Talman A.	Con	967	-
Davies B.	Lab	171	7.0
Simmons R.	Lab	161	-

Turnout 55.9 3.5

Folkestone Sandgate (2856) ³			
		vote	share
Hamer E.	Con	745	52.1
Ovenden P.	Lib/SDP	686	47.9
Fulford B.	Con	676	-
Powell A.	Con	671	-
Peachey P. Ms.	Lib/SDP	618	-
Mawer J. Ms.	Lib/SDP	611	-

Turnout 50.1 4.1

Hawkinge & Paddlesworth (1392)			
		vote	share
Hudson K.	Ind	417	72.5
Pettitt P. Ms.	Lib/SDP	158	27.5

Turnout 41.3 45.0

Hythe East (2835) ³			
		vote	share
Kensett A.	Con	998	55.3
Baxter K.	Con	965	-
Bailey E. Ms.	Con	886	-
Combs R.	Lib/SDP	517	28.7
Redfern G.	Lib/SDP	486	-
Denniff T.	Clean Sea	289	16.0

Turnout 63.6 26.7

Hythe North (2202) ²			
		vote	share
Capon C.	Con	999	74.0
Parris R. Ms.	Con	737	-
Done M. Ms.	Lib/SDP	351	26.0
		Turnout	61.3 48.0

Hythe South (2367) ²			
		vote	share
Trice R.	Con	630	44.2
Pearson J.	Con	607	-
Hayward S.	Lib/SDP	596	41.8
Whittlesea-Webster E.	Lib/SDP	438	-
Bench W.	Ind	199	14.0
		Turnout	60.2 2.4

Hythe West (2890) ²			
		vote	share
Hogg T.	Lib/SDP	1,012	62.2
Johnson R.	Lib/SDP	742	-
Woods B.	Con	615	37.8
Maisey J. Ms.	Con	502	-
		Turnout	56.3 24.4

Lydd (3622) ³			
		vote	share
Wood G.	Lib/SDP	1,015	52.8
Huxley-Williams P.	Lib/SDP	871	-
May J. Ms.	Lib/SDP	677	-
Ashworth P. Ms.	Con	661	34.4
Jackson W.	Con	515	-
Freeman V.	Con	507	-
Walsh B. Ms.	Lab	248	12.9
Day R.	Lab	212	-
Durrante S. Ms.	Lab	206	-
		Turnout	53.1 18.4

Lympe & Stanford (1309)			
		vote	share
Margary H.	Con	441	63.5
Horton F. Ms.	Lib/SDP	253	36.5
		Turnout	53.0 27.1

Marsh (1134)			
		vote	share
Apps J. Ms.	Con	405	71.9
Roger S. Ms.	Ind	87	15.5
Phillips L.	Lib/SDP	71	12.6
		Turnout	49.6 56.5

New Romney (3865) ³			
		vote	share
Raymond F.	Con	980	47.6
Banks C. Ms.	Con	908	-
Love P.	Con	867	-
Egan A.	Lib/SDP	654	31.8
Dunbavin N.	Lib/SDP	625	-
Blackman D.	Lib/SDP	585	-
Avery C.	Lab	425	20.6
Wall M.	Lab	287	-
Brierley M.	Lab	227	-
		Turnout	53.3 15.8

Saltwood & Newington (885)			
		vote	share
Payne W.	Con	374	67.4
Kennedy J. Ms.	Lib/SDP	181	32.6
		Turnout	62.7 34.8

Sellindge (1227)			
		vote	share
Gilbert D. Ms.	Con	474	70.2
Mueller S. Ms.	Lib/SDP	201	29.8
		Turnout	55.0 40.4

St. Mary In The Marsh (2596) ²			
		vote	share
Else H.	Ind	475	32.1
Forwood C.	Con	460	31.1
Barry P. Ms.	Ind	422	-
Swainson F.	Lib/SDP	341	23.0
Wakerell M.	Lib/SDP	311	-
Haydon-Brash C.	Res	205	13.8
		Turnout	57.0 1.0

Stone Street (2705) ²			
		vote	share
Ridley-Day J.	Con	908	51.8
Service H.	Con	847	-
Gretton J.	Lib/SDP	846	48.2
		Turnout	64.8 3.5

Swingfield & Acrise (1038)			
		vote	share
Spence I.	Con	345	52.7
King G.	Ind	310	47.3
		Turnout	63.1 5.3

Shepway - 1991

Dymchurch & Burmarsh (2865) ³			
		vote	share
Preston T.*	LD	1,137	54.9
Roots A.	LD	750	-
Maile S. Ms.	LD	729	-
Clifton-Holt S. Ms.	Con	477	23.0
Deighton A.*	Ind	457	22.1
Kent D.	Con	373	-
		Turnout	63.7 31.9

Elham (1055)			
		vote	share
Newell M.	LD	332	52.2
Blain D.*	Con	304	47.8
		Turnout	60.3 4.4

Folkestone Central (2546) ³			
		vote	share
Simpson S. Ms.*	LD	486	48.9
Luck M.*	LD	483	-
Anton J. Ms.	LD	404	-
Jones W.	Con	347	34.9
Adams J. Ms.	Lab	161	16.2
Eveleigh B. Ms.	Lab	145	-
Irvine A.	Lab	144	-
		Turnout	39.0 14.0

Folkestone Cheriton (4015) ³			
		vote	share
Cufley L. Ms.*	LD	1,143	53.5
Edwards R.	LD	1,051	-
Gane P.*	LD	1,015	-
McLaren P.	Lab	548	25.7
Goodall C. Ms.	Lab	543	-
Walters C. Ms.	Lab	541	-
Sparkes J.	Con	335	15.7
Mummery S. Ms.	Green	110	5.1
		Turnout	53.2 27.9

Folkestone East (2887) ³			
		vote	share
Doherty P.	Lab	840	53.0
Adams L.	Lab	816	-
Watson A.	Lab	794	-
Robertson-Ritchie H.	LD	469	29.6
Colquhoun G. Ms.*	LD	463	-
Brown R.*	LD	451	-
Bliss R.	Con	202	12.7
Cooper M.	Con	188	-
Paine A. Ms.	Con	169	-
Pennell B.	Green	75	4.7
		Turnout	53.3 23.4

Folkestone Foord (3252) ³			
		vote	share
Coping B.*	LD	876	61.7
Marsh P.*	LD	771	-
Green J. Ms.*	LD	727	-
Coles-Watson R.	Lab	238	16.8
Phelan J.	Lab	213	-
Scott M. Ms.	Lab	210	-
Jordan P.	Con	184	13.0
Warren A. Ms.	Con	171	-
Danstead P.	Green	122	8.6
		Turnout	41.5 44.9

Folkestone Harbour (3204) ³			
		vote	share
Sinclair R.*	LD	594	44.5
Horner V. Ms.*	LD	570	-
Parker I.	LD	524	-
Brazier S.	Lab	414	31.0
Wrigley J.	Lab	396	-
Robertson-Ritchie A. Ms.	Lab	390	-
Richards J.	Con	326	24.4
Doughty D. Ms.	Con	311	-
Wren S.	Con	301	-
		Turnout	39.8 13.5

Folkestone Harvey (3476) ³			
		vote	share
Bowers S.	Con	1,009	68.7
Bunting G.	Con	1,001	-
Love R.*	Con	978	-
Brown M.	LD	460	31.3
Lolley P.	LD	406	-
Girgin A.	LD	397	-
		Turnout	40.8 37.4

Folkestone Morehall (3379) ³			
		vote	share
Jones M. Ms.*	LD	822	51.7
Pascoe R.	LD	786	-
Terry J. Ms.	LD	754	-
Pratt D.	Con	561	35.3
Talman A.	Con	519	-
Walton J.	Con	487	-
Fidge I.	Lab	206	13.0
Clampitt S. Ms.	Lab	204	-
Taylor R.	Lab	190	-
		Turnout	44.7 16.4

Folkestone Park (4323) ³			
		vote	share
Dickinson D.	LD	880	47.5
Everett R. Ms.*	LD	871	-
Steele S.	LD	842	-
Culpin W. Ms.	Con	798	43.0
Fell I.	Con	759	-
Martin P.	Con	702	-
Mercer M.	Lab	176	9.5
Phelam C.	Lab	173	-
Diwell N. Ms.	Lab	170	-
		Turnout	41.4 4.4

Folkestone Sandgate (3023) ³			
		vote	share
Elliott H.	Con	696	52.2
Barrett C.	LD	638	47.8
Hughes C.	LD	631	-
Beddows G.	LD	609	-
Lawley P. Ms.	Con	605	-
Thompson N. Ms.	Con	555	-
		Turnout	41.2 4.3

Hawkinge & Paddlesworth (1397)			
		vote	share
Hudson K.*	Ind	0	0.0
		Turnout	0.0 0.0

Hythe East (2840) ³			
		vote	share
Kensett A.*	Con	810	54.5
Bailey E. Ms.*	Con	736	-
Baxter K.*	Con	691	-
Bellamy R.	LD	676	45.5
Corney M.	LD	576	-
Turnout		51.2	9.0

Hythe North (2279) ²			
		vote	share
Capon C.*	Con	875	64.5
Dunkley N.	Con	696	-
Done M. Ms.	LD	481	35.5
Turnout		52.8	29.1

Hythe South (2341) ²			
		vote	share
Hayward S.	LD	624	51.7
Pearson J.*	Con	583	48.3
Trice R.*	Con	563	-
Reed D. Ms.	LD	562	-
Turnout		53.3	3.4

Hythe West (2772) ²			
		vote	share
Drury A.	LD	663	49.6
Harris W. Ms.	LD	632	-
Maisey H.	Con	508	38.0
Maisey J. Ms.	Con	486	-
Gavrilocic P.	Lab	167	12.5
Turnout		47.1	11.6

Lydd (3664) ³			
		vote	share
Huxley-Williams P.*	LD	1,035	61.9
May J. Ms.*	LD	952	-
Walsh B. Ms.	LD	863	-
Davies B. Ms.	Con	637	38.1
Turnout		45.6	23.8

Lympe & Stanford (1215)			
		vote	share
Newlands S. Ms.	Con	310	45.2
Burford J. Ms.	LD	195	28.4
Stutchbury P.	Ind	181	26.4
Turnout		56.5	16.8

Marsh (1085)			
		vote	share
Baxter E. Ms.	Con	303	55.0
Hicks A.	LD	248	45.0
Turnout		50.8	10.0

New Romney (4442) ³			
		vote	share
Alderton A. Ms.	Con	1,079	55.7
George S.	Con	925	-
Waddell P. Ms.	Con	871	-
Elliott J. Ms.	LD	857	44.3
Dunbavin N.	LD	850	-
Egan A.	LD	795	-
Turnout		40.3	11.5

Saltwood & Newington (813)			
		vote	share
Payne W.*	Con	356	75.4
Cox G. Ms.	LD	116	24.6
Turnout		58.1	50.8

Sellindge (1167)			
		vote	share
Rossiter P.	LD	380	50.1
Gilbert D. Ms.*	Con	378	49.9
Turnout		65.0	0.3

St. Mary In The Marsh (2700) ²			
		vote	share
Locke R.	LD	551	55.8
Scrivener F.	LD	507	-
Allison G.	Con	437	44.2
Forwood C.	Con	373	-
Turnout		34.6	11.5

Stone Street (2682) ²			
		vote	share
Ridley-Day J.*	Con	738	50.5
Clinch J. Ms.	Con	735	-
Elliott P. Ms.	LD	724	49.5
Landers B. Ms.	LD	687	-
Turnout		53.8	1.0

Swingfield & Acrise (992)			
		vote	share
King G.	Ind	290	52.7
Spencer I.*	Con	260	47.3
Turnout		55.4	5.5

Shepway - 1995

Dymchurch & Burmarsh (3026) ³			
		vote	share
Preston T.*	Lib	746	34.8
Roots A.*	LD	526	24.6
Maile S. Ms.*	LD	503	-
Gibbs T.	Con	400	18.7
Meyers I.	Lab	336	15.7
Fox L.	Lab	296	-
Ireland R.	Lab	287	-
Solorz R.	Ind	134	6.3
Turnout		43.2	10.3

Elham (1081)			
		vote	share
Newell M.*	LD	256	43.5
Napper R.	Con	233	39.6
Bray R.	Lab	100	17.0
Turnout		55.4	3.9

Folkestone Central (2880) ³			
		vote	share
Luck M.*	LD	372	41.4
Simpson S. Ms.	LD	356	-
Scaum T.	LD	283	-
Irvine A.	Lab	269	30.0
Diwell N. Ms.	Lab	258	-
Fell I.	Con	257	28.6
Moore R.	Lab	250	-
Taylor D.*	Con	247	-
Turnout		31.8	11.5

Folkestone Cheriton (4169) ³			
		vote	share
Cufley L. Ms.*	LD	806	34.1
Gane P.*	LD	726	-
Buss T.	Lib	707	29.9
Cruse A. Ms.	Lab	644	27.2
Walters C. Ms.	Lab	629	-
Sealy B.	Lab	603	-
Cremin R.	Con	208	8.8
Turnout		40.1	4.2

Folkestone East (3223) ³			
		vote	share
Doherty P.*	Lab	846	59.5
Adams L.*	Lab	804	-
Taylor R.	Lab	767	-
Colquhoun G. Ms.*	Lib	459	32.3
Wright T.	Lib	379	-
Wick A.	Lib	369	-
Colville O.	Con	116	8.2
Vines E.	Con	109	-
Turnout		44.2	27.2

Folkestone Foord (3586) ³			
		vote	share
Copping B.*	LD	761	63.2
Marsh P.	LD	644	-
Green J. Ms.*	LD	592	-
Hutchinson P.	Lab	443	36.8
Roberts E. Ms.	Lab	412	-
Phelan J.	Lab	407	-
Turnout		33.5	26.4

Folkestone Harbour (3482) ³			
		vote	share
Bingham P.	Lab	686	47.4
Stockham J.	Lab	663	-
Patience J.	Lab	636	-
Caruana T. Ms.*	Lib	567	39.2
Millwood H. Ms.	Lib	515	-
Parker I.*	Lib	480	-
Johnson D.	Con	195	13.5
Turnout		41.5	8.2

Folkestone Harvey (3722) ³			
		vote	share
Bunting G.*	Con	799	47.6
Love R.*	Con	780	-
Sullivan J.	Con	755	-
Robertson-			
Ritchie A. Ms.	Lab	320	19.0
Patience G. Ms.	Lab	304	-
Durban R.	Lab	303	-
Brown M.	Lib	288	17.1
Renshaw J.	LD	273	16.3
Ruston G.	Lib	246	-
Turnout		37.9	28.5

Folkestone Morehall (3547) ³			
		vote	share
Jones M. Ms.*	LD	528	37.8
Baker A.	LD	510	-
Pascoe R.*	LD	498	-
Adams L. Ms.	Lab	469	33.6
Mitchell W. Ms.	Lab	421	-
Patience C.	Lab	415	-
Russell J.	Con	398	28.5
Pratt D.	Con	394	-
Walton J.	Con	358	-
Turnout		40.7	4.2

Folkestone Park (4662) ³			
		vote	share
Everett R. Ms.*	LD	663	29.5
Dickinson D.*	LD	651	-
Robertson-Ritchie H.	Lib	616	27.5
Richmond D.	Con	533	23.8
Adams J. Ms.	Lab	432	19.3
Goodall C. Ms.	Lab	429	-
Phelan C.	Lab	397	-
Turnout		34.1	2.1

Folkestone Sandgate (3443) ³			
		vote	share
Elliott H.*	Con	476	39.9
Macmillan J. Ms.	Con	475	-
Bliss R.	Con	457	-
Barrett C.*	LD	394	33.0
Dray T.	LD	345	-
Wilson W.	LD	327	-
Downham J. Ms.	Lab	323	27.1
Featherbe J.	Lab	286	-
Lyle J.	Lab	271	-
Turnout		35.5	6.9

Hawkinge & Paddlesworth (1566)			
		vote	share
Hudson K.*	Ind	347	63.7
Marsh P.	Lab	198	36.3
Turnout		35.1	27.3

Hythe East (2948)³

		vote	share
Bailey E. Ms.*	Con	608	45.4
Spencer J.	Con	602	-
Bailey A.	Con	581	-
Bushell D.	LD	452	33.8
Bush T.	LD	428	-
Dowe N.	LD	341	-
Doherty J. Ms.	Lab	278	20.8
Chitty M.	Lab	203	-
Wynne M.	Lab	181	-
Turnout		45.0	11.7

Hythe North (2346)²

		vote	share
Capon C.*	Con	632	48.4
Partridge G.	Con	485	-
Done M. Ms.	LD	273	20.9
Corney M.	LD	269	-
Palmer K.	Ind	250	19.2
Rayner J. Ms.	Lab	150	11.5
Showler J.	Lab	110	-
Turnout		50.7	27.5

Hythe South (2504)²

		vote	share
Pearson J.*	Con	575	47.6
Sparkes J.	Con	468	-
Hayward S.*	LD	411	34.1
Botting M.	LD	354	-
Jones P. Ms.	Lab	221	18.3
McLaren P.	Lab	180	-
Turnout		47.2	13.6

Hythe West (2918)²

		vote	share
Maisey J. Ms.	Ind	425	28.0
Harris W. Ms.*	LD	403	26.6
Stuhlemmer G.	Con	376	24.8
Jones J.	Lab	313	20.6
Drury A.*	LD	313	-
Walters J.	Lab	299	-
Turnout		41.9	1.5

Lydd (3986)³

		vote	share
Wood-Brignall F.	Con	518	30.5
Elliot J. Ms.	Lab	480	28.3
Gentle R.	Lab	457	-
May J. Ms.*	LD	445	26.2
Worrall D.	Lab	440	-
Oiller S. Ms.	LD	425	-
Williams I.	Con	409	-
Walsh B. Ms.*	LD	384	-
Davis M.	Con	365	-
Masters M. Ms.	Ind	254	15.0
Turnout		38.6	2.2

Lympe & Stanford (1272)

		vote	share
Newlands S. Ms.*	Con	272	48.9
Landers B. Ms.	Lib	173	31.1
Showler S. Ms.	Lab	111	20.0
Turnout		44.0	17.8

Marsh (1195)

		vote	share
Paine J.*	Con	270	56.3
Coombe A.	Lab	139	29.0
Andrews A.	LD	71	14.8
Turnout		40.2	27.3

New Romney (4975)³

		vote	share
Ellis T.	Lab	753	33.2
Leach R.	Lab	691	-
Jones H.	Lab	652	-
Alderton A. Ms.*	Ind	638	28.2
Waddell P. Ms.*	Con	600	26.5
George S.*	Con	589	-
Paine A. Ms.	Con	585	-
Doyle R.	LD	275	12.1
Hills A.	LD	255	-
Forwood C.	Ind	233	-
Allan S.	Ind	233	-
Turnout		40.8	5.1

Saltwood & Newington (882)

		vote	share
Waters C. Ms.	Con	177	43.5
Bryan R.	Lab	126	31.0
Hart R.	Lib	104	25.6
Turnout		46.1	12.5

Sellindge (1278)

		vote	share
Hollingsbee J. Ms.	Con	297	43.2
Rossiter E. Ms.*	Lib	278	40.4
Mullings D.	Lab	113	16.4
Turnout		54.3	2.8

St. Mary In The Marsh (2221)²

		vote	share
Cirket A.	Lab	517	46.5
Neale J.	Lab	411	-
Allison G.	Con	396	35.6
Webster F. Ms.	Con	334	-
Scrivener F.*	Lib	199	17.9
Stevens S. Ms.	Lib	184	-
Turnout		49.5	10.9

Stone Street (2878)²

		vote	share
Blinston-Jones M.	LD	655	42.9
Monk D.	Con	633	41.4
Philip P. Ms.	Con	613	-
Pealling R.	LD	501	-
Jacobs M.	Lab	240	15.7
McNicholas D. Ms.	Lab	212	-
Turnout		53.4	1.4

Swingfield & Acrise (1051)

		vote	share
King G.*	Ind	201	43.7
Tearle C.	Con	172	37.4
Pope A.	Lab	87	18.9
Turnout		44.3	6.3

Shepway - 1999**Dymchurch & Burmarsh (3105)³**

		vote	share
Preston T.*	LD	656	46.4
Gibbs T.	Con	419	29.6
Maile S. Ms.*	LD	387	-
Head S.	Con	361	-
Meyers I.	Lab	339	24.0
Sharp M. Ms.	LD	314	-
Millen P. Ms.	Lab	274	-
Stribbling A.	Lab	220	-
Turnout		36.8	16.8

Elham (1173)

		vote	share
Crees C. Ms.	LD	344	48.9
Parry Y. Ms.	Con	338	48.1
Patience R. Ms.	Lab	21	3.0
Turnout		62.6	0.9

Folkestone Central (2953)³

		vote	share
Mitchell W. Ms.	Lab	347	37.8
Jones C.	Con	328	35.8
Bernard D.	Con	320	-
Miranda J. Ms.	Lab	302	-
Wheeler R. Ms.	Con	299	-
Roberts E. Ms.	Lab	278	-
Luck M.*	LD	242	26.4
Baldock R.	LD	211	-
Scaum T.*	LD	187	-
Turnout		31.4	2.1

Folkestone Cheriton (4197)³

		vote	share
Cufley L. Ms.*	LD	708	63.3
Buss T.*	LD	702	-
Gane P.*	LD	682	-
Irvine A.	Lab	228	20.4
Croucher K. Ms.	Lab	214	-
Phelan C.	Lab	184	-
Worthy J.	Con	183	16.4
Turnout		26.9	42.9

Folkestone East (3078)³

		vote	share
Doherty P.*	Lab	471	49.6
Adams L.*	Lab	434	-
Taylor R.*	Lab	417	-
Andrews J. Ms.	LD	288	30.3
Brazier L. Ms.	LD	264	-
Green J. Ms.	LD	264	-
Griffiths K.	Con	152	16.0
Segal E.	Soc	39	4.1
Turnout		30.5	19.3

Folkestone Foord (3574)³

		vote	share
Copping B.*	LD	587	62.1
Marsh P.*	LD	536	-
Jenkins G. Ms.	LD	528	-
Bowling D.	Lab	249	26.3
Knight J. Ms.	Lab	237	-
Deane J.	Lab	236	-
Colville O.	Con	109	11.5
Turnout		26.1	35.8

Folkestone Harbour (3486)³

		vote	share
Bingham P.*	Lab	473	44.7
Stockham J.*	Lab	462	-
Patience J.*	Lab	422	-
Caruana T. Ms.	LD	369	34.8
Waghorne P.	LD	288	-
Hird M. Ms.	LD	285	-
Brinton J. Ms.	Con	217	20.5
Turnout		29.3	9.8

Folkestone Harvey (3892)³

		vote	share
Bunting G.*	Con	787	59.4
Love R.*	Con	760	-
Sullivan J.*	Con	756	-
Goodall C. Ms.	Lab	215	16.2
Robertson-Ritchie H.	LD	202	15.2
Patience C.	Lab	187	-
Phelan J.	Lab	174	-
John N.	LD	172	-
Smith B. Ms.	Green	122	9.2
Turnout		32.5	43.1

Folkestone Morehall (3650)³

		vote	share
Baker A.*	LD	469	35.7
George M. Ms.	LD	457	-
Godfrey J. Ms.	Lab	441	33.5
Walton J.	Con	405	30.8
Lyle J.	Lab	357	-
Harland-			
Suddes M. Ms.	Lab	353	-
Parker I.	LD	345	-
Turnout		33.6	2.1

Folkestone Park (4762) ³			
		vote	share
Everett R. Ms.*	LD	595	43.5
Skingle P.	Con	595	43.5
Dickinson D.*	LD	582	-
Tolputt A.	Con	566	-
Davenport P.	LD	562	-
Martin P.	Con	560	-
Adams J. Ms.	Lab	179	13.1
McLaren P.	Lab	177	-
McLaren S. Ms.	Lab	169	-
Turnout		29.6	0.0

Folkestone Sandgate (3469) ³			
		vote	share
Macmillan J. Ms.*	Con	571	54.9
Bliss R.*	Con	556	-
Boot G.	Con	539	-
Cufley N.	LD	245	23.5
Crocker E. Ms.	LD	230	-
Chitty M.	Lab	225	21.6
Fuller C.	Lab	165	-
Moore R.	Lab	151	-
Turnout		29.0	31.3

Hawkinge & Paddlesworth (2350)			
		vote	share
Nixon M.	Con	410	70.8
Regan W.	Lab	169	29.2
Turnout		25.1	41.6

Hythe East (3025) ³			
		vote	share
Belcourt K. Ms.	Con	587	52.4
Bailey J. Ms.	Con	570	-
Spencer J.*	Con	563	-
Bushell D.	LD	375	33.5
Fox M. Ms.	LD	325	-
Fox R.	LD	299	-
Doherty J. Ms.	Lab	159	14.2
Piper W. Ms.	Lab	120	-
Adams L. Ms.	Lab	118	-
Turnout		37.5	18.9

Hythe North (2463) ²			
		vote	share
Capon C.*	Con	613	64.5
Partridge G.*	Con	504	-
Bryan A. Ms.	LD	218	22.9
Done M. Ms.	LD	217	-
Anderson J. Ms.	Lab	120	12.6
Anthony T. Ms.	Lab	112	-
Turnout		39.7	41.5

Hythe South (2635) ²			
		vote	share
Ross M.	Con	598	50.9
Sparkes J.*	Con	570	-
Horst C. Ms.	Lab	293	24.9
Drury A.	LD	284	24.2
Walters C. Ms.	Lab	200	-
Turnout		42.2	26.0

Hythe West (2956) ²			
		vote	share
Cardale S.	Con	352	30.4
Sealy B.	Lab	324	28.0
Lyons M.	Con	308	-
Harris W. Ms.*	LD	307	26.5
Clark G.	Lab	300	-
Kennet M. Ms.	LD	217	-
Maisey J. Ms.*	Ind	174	15.0
Turnout		36.3	2.4

Lydd (4266) ³			
		vote	share
Wood-Brignall F.*	Con	687	42.0
Dawson V. Ms.	Con	529	-
Walsh M.	Lab	475	29.1
Masters M. Ms.	LD	472	28.9
Sanyal A.	Con	443	-
Gentle R.*	Lab	435	-
Oiller K.	LD	410	-
Pearson S.	Lab	397	-
Oiller S. Ms.	LD	384	-
Turnout		36.9	13.0

Lypnpe & Stanford (1393)			
		vote	share
Newlands S. Ms.*	Con	416	67.8
Loft P. Ms.	LD	147	23.9
Walters J.	Lab	51	8.3
Turnout		45.2	43.8

Marsh (1265)			
		vote	share
Paine J.*	Con	310	74.5
Hammond D. Ms.	Lab	106	25.5
Turnout		33.3	49.0

New Romney (5309) ³			
		vote	share
Waters C. Ms.	Con	860	45.0
Ellis T.*	Lab	830	43.4
Waddell P. Ms.	Con	800	-
Annett M.	Con	727	-
Kennett P.	Lab	688	-
Smith S.	Lab	651	-
Hills A.	LD	223	11.7
Turnout		32.7	1.6

Saltwood & Newington (954)			
		vote	share
Carey S. Ms.	Con	240	59.1
Landers B. Ms.	LD	120	29.6
Starr M.	Lab	46	11.3
Turnout		43.4	29.6

Sellindge (1322)			
		vote	share
Hollingsbee J. Ms.*	Con	362	59.6
Locks P.	LD	184	30.3
Pope A.	Lab	61	10.0
Turnout		47.3	29.3

St. Mary In The Marsh (2318) ²			
		vote	share
Cirket A.*	Lab	445	-
Anthony W.	Lab	445	44.4
Brooke P.	Con	357	35.6
Scrivener F.	LD	201	20.0
Turnout		40.2	8.8

Stone Street (2931) ²			
		vote	share
Monk D.*	Con	744	54.0
Barchi W.	Con	742	-
Bryan R.	LD	414	30.0
McNicholas D. Ms.	Lab	220	16.0
Croucher R.	Lab	150	-
Turnout		43.5	23.9

Swingfield & Acrise (1084)			
		vote	share
Tearle C.*	Con	283	68.7
Regan T. Ms.	Lab	129	31.3
Turnout		38.8	37.4

Shepway - 2003

Dymchurch & St. Marys Bay (5048) ³			
		vote	share
Preston T.*	LD	1,135	47.8
White J. Ms.*	LD	913	-
Maile S. Ms.*	LD	880	-
Allison G.	Con	596	25.1
Levitt J.	Con	532	-
Castle L. Ms.	Con	466	-
Gibbs T.*	Ind	337	14.2
Cirket A.*	Lab	308	13.0
Lindsey A.	Lab	252	-
Palmer-Tutt L. Ms.	Lab	222	-
Meyers B.	Ind	203	-
Turnout		42.6	22.7

Elham & Stelling Minnis (1618)			
		vote	share
Crees C. Ms.*	LD	522	53.4
Parry Y. Ms.	Con	455	46.6
Turnout		60.5	6.9

Folkestone Cheriton (4782) ³			
		vote	share
Cufley L. Ms.*	LD	1,178	84.5
Buss T.*	LD	1,053	-
Gane P.*	LD	1,000	-
Boot G.*	Con	216	15.5
Tearle R.	Con	207	-
Boot S. Ms.	Con	196	-
Turnout		29.6	69.0

Folkestone East (3036) ²			
		vote	share
Andrews J. Ms.	LD	591	63.1
Jenkins G. Ms.*	LD	548	-
Hibbert G.	Con	174	18.6
Makins S.	Lab	172	18.4
Hibbert M. Ms.	Con	157	-
Snowman A.	Lab	152	-
Turnout		32.4	44.5

Folkestone Foord (3399) ²			
		vote	share
Copping B.*	LD	689	87.1
Marsh P.*	LD	608	-
James I.	Con	102	12.9
James J. Ms.	Con	87	-
Turnout		24.8	74.2

Folkestone Harbour (3372) ²			
		vote	share
Caruana T. Ms.	LD	702	61.5
Culshaw K. Ms.	LD	647	-
Stockham J.*	Lab	255	22.3
Bingham P.*	Lab	210	-
Cussens M.	Con	184	16.1
Monk G. Ms.	Con	130	-
Turnout		34.9	39.2

Folkestone Harvey Central (3422) ²			
		vote	share
Green R.	LD	394	37.5
Barker H.*	Con	386	36.7
Sullivan J. Ms.*	Con	326	-
Muston B.	LD	256	-
Mitchell W. Ms.*	Lab	235	22.4
Simpson D.	Lab	161	-
McLaren P.	Ind	36	3.4
Turnout		55.4	0.8

Folkestone Harvey West (3106) ²			
		vote	share
Bunting G.*	Con	609	62.2
Love R.*	Con	595	-
Barrett M. Ms.	LD	370	37.8
Robertson-Ritchie H.	LD	365	-
Turnout		34.3	24.4

Folkestone Morehall (3012) ²			
		vote	share
George G.*	LD	700	58.6
Baker A.*	LD	698	-
Hassett D.	Con	387	32.4
Wheeler R. Ms.	Con	347	-
Walters C. Ms.	Lab	108	9.0
Turnout		39.8	26.2

Folkestone Park (4558) ³			
		vote	share
Hughes J.	LD	1,015	-
Dickinson D.*	LD	1,015	56.0
Beaumont L. Ms.	LD	984	-
Boyt E. Ms.	Con	798	44.0
North A.	Con	652	-
Bernard D.*	Con	649	-
Turnout		41.0	12.0

Folkestone Sandgate (2988) ²			
		vote	share
Bliss R.*	Con	486	55.8
Macmillan J. Ms.*	Con	480	-
Crocker E. Ms.	LD	385	44.2
Wright P. Ms.	LD	341	-
Turnout		31.6	11.6

Hythe Central (4575) ³			
		vote	share
Harris W. Ms.	LD	1,219	55.4
Matthews L.	LD	1,162	-
Nolan J.*	LD	1,046	-
Capon C.*	Con	983	44.6
Ross M.*	Con	780	-
Lyons M.*	Con	779	-
Turnout		46.9	10.7

Hythe East (3196) ²			
		vote	share
Bushell D.	LD	825	57.7
Maskell D. Ms.	LD	765	-
Bailey J. Ms.*	Con	604	42.3
Belcourt K. Ms.*	Con	586	-
Turnout		45.6	15.5

Hythe West (3235) ²			
		vote	share
Hayward S.	LD	734	51.1
Farmer A.	LD	728	-
Cardale S.*	Con	553	38.5
Hall J.	Con	503	-
Murphy D.	Lab	149	10.4
Turnout		44.1	12.6

Lydd (4305) ³			
		vote	share
Wood-Brignall F.*	Con	677	37.9
Dawson V. Ms.*	Con	583	-
Richardson W.	Con	565	-
Oiller K.	LD	450	25.2
Oiller S. Ms.	LD	431	-
Hills A.	LD	376	-
Walsh M.*	Lab	356	19.9
Snell G.	Ind	303	17.0
Carpenter R.	Lab	251	-
Lythgoe	Lab	225	-
Turnout		36.5	12.7

Lympe & Stanford (1538)			
		vote	share
Newlands S. Ms.*	Con	437	69.9
Burford J. Ms.	LD	188	30.1
Turnout		40.8	39.8

New Romney Coast (2755) ²			
		vote	share
Waddell P. Ms.*	Con	476	53.4
Zsinko Y. Ms.	Con	436	-
Hiscock J. Ms.	LD	291	32.7
Daykin S. Ms.	LD	249	-
Stribbling A	Lab	124	13.9
Turnout		31.0	20.8

New Romney Town (2574) ²			
		vote	share
Waters C. Ms.*	Con	438	47.2
Ellis T.*	Lab	360	38.8
Ryder A.	Lab	234	-
Wickens A. Ms.	LD	129	13.9
Birchmore A. Ms.	LD	121	-
Turnout		33.6	8.4

North Downs East (4719) ³			
		vote	share
Smith P.*	LD	1,101	55.1
Smith C. Ms.	LD	1,087	-
Callahan D.	LD	1,057	-
Curd R.	Con	795	39.8
Hudd B. Ms.	Con	788	-
Tearle C.*	Con	765	-
Regan W.	Lab	103	5.2
Anderson J. Ms.	Lab	99	-
Regan T. Ms.	Lab	95	-
Turnout		44.3	15.3

North Downs West (3280) ²			
		vote	share
Hollingsbee J. Ms.*	Con	777	59.0
Monk D.*	Con	710	-
Chitty W.	LD	539	41.0
Turton F.	LD	514	-
Turnout		42.7	18.1

Romney Marsh (1698)			
		vote	share
Paine J.*	Con	363	56.2
Stokes T.	LD	157	24.3
Cummings L.	Lab	126	19.5
Turnout		38.3	31.9

Tolsford (1553)			
		vote	share
Carey S. Ms.*	Con	539	71.1
Bryan A. Ms.	LD	219	28.9
Turnout		48.9	42.2

Shepway - 2007

Dymchurch & St. Marys Bay (5119) ³			
		vote	share
Clifton-Holt A.	Con	985	42.6
Tillson R.	Con	846	-
Williams O. Ms.	Con	799	-
Gibbs T.	Shepway	562	24.3
White J. Ms.*	LD	474	20.5
Barratt J.	Shepway	456	-
Hewton M.	Shepway	439	-
Wright B.	LD	431	-
Maile S. Ms.*	PF	290	12.5
Day N.	PF	196	-
Turnout		39.9	18.3

Elham & Stelling Minnis (1661)			
		vote	share
Carr P. Ms.	Con	619	70.1
Barchi W.	Ind	155	17.6
Matthews S. Ms.	LD	109	12.3
Turnout		53.6	52.5

Folkestone Cheriton (4654) ³			
		vote	share
Gane P.*	LD	725	47.6
Carroll P.	LD	711	-
Prater T.	LD	673	-
Boot G.	Con	433	28.4
Boot S. Ms.	Con	432	-
Marshall H.	Con	420	-
Buss T.*	PF	366	24.0
Cufley L. Ms.*	PF	328	-
Stephens P.	PF	298	-
Turnout		34.1	19.2

Folkestone East (3036) ²			
		vote	share
North A.	Con	345	33.4
Dunning A.	LD	319	30.9
Salmon M.	LD	313	-
Williams G.	Con	297	-
Andrews J. Ms.*	PF	276	26.7
Crees C. Ms.	PF	226	-
Knight J. Ms.	Lab	93	9.0
Makins S.	Lab	83	-
Turnout		34.4	2.5

Folkestone Foord (3311) ²			
		vote	share
Copping B.*	PF	555	49.6
Marsh P.*	PF	532	-
Speller M. Ms.	LD	416	37.1
McNeice A.	LD	386	-
Williams C. Ms.	Con	149	13.3
Worthy J.	Con	124	-
Turnout		34.6	12.4

Folkestone Harbour (3230) ²			
		vote	share
Sanger E. Ms.	LD	499	43.5
Wallace S. Ms.	LD	496	-
Burr G.	Con	236	20.6
Monk A. Ms.	Con	215	-
Culshaw K. Ms.*	PF	160	13.9
Edson M.	PF	143	-
James D.	BNP	139	12.1
Williams H.	BNP	126	-
Bingham P.	Lab	114	9.9
Mitchell W. Ms.	Lab	102	-
Turnout		36.2	22.9

Folkestone Harvey Central (3450) ²			
		vote	share
Barker H.*	Con	581	55.5
Martin P.	Con	487	-
Fuller G.	LD	465	44.5
Scaum T.	LD	400	-
Turnout		31.5	11.1

Folkestone Harvey West (3217) ²			
		vote	share
Bunting G.*	Con	865	64.1
Love R.*	Con	861	-
Bailey R. Ms.	Shepway	209	15.5
Brightman R.	Shepway	198	-
Lee C.	LD	181	13.4
Robertson-Ritchie H.	LD	178	-
Kendall M. Ms.	UKIP	94	7.0
Turnout		41.9	48.6

Folkestone Morehall (3020) ²			
		vote	share
McNeice T.	LD	571	46.4
Monk P.	Con	537	43.6
Wheeler R. Ms.	Con	527	-
Briddock D.	LD	496	-
Walters C. Ms.	Lab	123	10.0
Stevens P. Ms.	Lab	90	-
Turnout		41.6	2.8

Folkestone Park (4569) ³			
		vote	share
Beaumont L. Ms.*	LD	684	30.1
Johnson D.	Con	624	27.5
Pascoe R.	Con	614	-
Collier J.	Con	594	-
Barrett M. Ms.	LD	581	-
Rolle B. Ms.	LD	555	-
Berry A. Ms.	Ind	384	16.9
Boyt E. Ms.	Shepway	293	12.9
Copping P. Ms.	PF	174	7.7
Highland M.	Shepway	135	-
Fagg W.	PF	122	-
Sacre C. Ms.	UKIP	111	4.9
Green R.	PF	104	-
Turnout		39.2	2.6

Folkestone Sandgate (3130)²

		vote	share
Bliss R.*	Con	613	54.5
Holben J. Ms.	Con	591	-
Macmillan J. Ms.*	Ind	370	32.9
Greenwall J.	Ind	327	-
Crocker E. Ms.	LD	142	12.6
Prater S. Ms.	LD	138	-

Turnout 36.2 21.6

Hythe Central (4566)³

		vote	share
Dearden M.	Con	1,147	53.8
Ewart-James A.	Con	1,120	-
Lyons M.	Con	1,080	-
Matthews N.	LD	565	26.5
Matthews S.	LD	512	-
Nolan J. Ms.*	LD	473	-
Ross M.	Ind	419	19.7
Pongiluppi F. Ms.	Ind	419	-
Metherell A.	Ind	389	-

Turnout 47.4 27.3

Hythe East (3283)²

		vote	share
Belcourt K. Ms.	Con	947	53.6
Owen D.	Con	882	-
Maskell D. Ms.*	LD	287	16.2
Bailey J. Ms.	Ind	269	15.2
Dowling P.	LD	255	-
Hawkins C. Ms.	Shepway	179	10.1
Kendall T.	UKIP	85	4.8

Turnout 45.7 37.4

Hythe West (3284)²

		vote	share
Hayward S.*	Con	798	58.9
Oliver L. Ms.	Con	736	-
Farmer A.*	LD	238	17.6
Roots P.	LD	200	-
Murphy D.	Lab	165	12.2
Dean P. Ms.	UKIP	153	11.3
Millen P. Ms.	Lab	141	-

Turnout 39.0 41.4

Lydd (4576)³

		vote	share
Goddard C.	Con	964	50.1
Richardson W.*	Con	948	-
Dawson V. Ms.*	Con	894	-
Walsh M.	Shepway	517	26.9
Snell G.	Shepway	459	-
Oiller S. Ms.	LD	442	23.0
Broadbridge S. Ms.	Shepway	435	-
Boulden T.	LD	368	-
Howard K.	LD	346	-

Turnout 42.5 23.2

Lympne & Stanford (1567)

		vote	share
Newlands S. Ms.*	Con	544	67.4
Plumstead A.	Ind	189	23.4
Piercy M. Ms.	LD	74	9.2

Turnout 48.8 44.0

New Romney Coast (2825)²

		vote	share
Acres-Ashworth S. Ms.	LD	621	50.8
Loseby V. Ms.	LD	620	-
Waddell P. Ms.*	Con	602	49.2
Simmons P.	Con	596	-

Turnout 45.7 1.6

New Romney Town (2563)²

		vote	share
Waters C. Ms.*	Con	658	62.3
Stephenson D.	Con	576	-
Joynes R.	Ind	201	19.0
Nevard W. Ms.	Ind	148	-
Cirket A.	Lab	132	12.5
Stribbling A.	Lab	94	-
Done M. Ms.	LD	66	6.2

Turnout 39.1 43.2

North Downs East (5509)³

		vote	share
Godfrey D.	Con	1,056	48.4
Hill R.	Con	1,021	-
Peall S.	Con	982	-
Callahan D.*	Shepway	423	19.4
Godden S.	Shepway	396	-
Tearle C.	Shepway	361	-
Smith P.*	Ind	298	13.6
Smith C. Ms.*	Ind	270	-
Jack N.	UKIP	245	11.2
Kincaid P.	LD	162	7.4

Turnout 35.2 29.0

North Downs West (3485)²

		vote	share
Hollingsbee J. Ms.*	Con	996	67.3
Monk D.*	Con	935	-
Waitt W.	Shepway	259	17.5
McNeice L.	LD	226	15.3
McNeice R.	LD	205	-

Turnout 44.8 49.8

Romney Marsh (1748)

		vote	share
Ashworth S.	Con	511	69.0
Oiller K.	LD	122	16.5
Suckling D.	Lab	108	14.6

Turnout 42.6 52.5

Tolsford (1654)

		vote	share
Carey S. Ms.*	Con	649	81.7
Roberts S.	LD	145	18.3

Turnout 48.5 63.5

Shepway - 2011**Dymchurch & St. Marys Bay (5269)³**

		vote	share
Wilkins R.	Con	1,233	50.1
Mullard T.	Con	1,205	-
Tillson R.*	Con	1,133	-
Harvey A.	Lab	727	29.6
Buckley M. Ms.	Lab	624	-
Wilson T.	Ind	499	20.3
McNicholl A. Ms.	Lab	481	-

Turnout 43.8 20.6

Elham & Stelling Minnis (1769)

		vote	share
Carr-Hurdwell P. Ms.*	Con	809	78.6
Bryan R.	LD	220	21.4

Turnout 58.1 57.2

Folkestone Cheriton (4950)³

		vote	share
Gane P.*	Con	825	36.7
West R.	Con	688	-
Grundy R.	Con	650	-
Gurung D.	LD	507	22.5
Prater T.*	LD	476	-
Matthews N.	LD	400	-
Wallace P.	Lab	393	17.5
Buss T.	PF	322	14.3
Cufley L. Ms.	PF	282	-
Driscoll C. Ms.	PF	227	-
Segal E.	TUSC	202	9.0
Cruse S.	TUSC	187	-

Turnout 40.4 14.1

Folkestone East (3462)²

		vote	share
Dunning A.*	Con	434	36.6
North A.*	Con	411	-
Sandford D.	Lab	302	25.5
Robertson-Ritchie D.	LD	188	15.9
Green J. Ms.	PF	181	15.3
Proost B. Ms.	PF	156	-
Tomison M. Ms.	Ind	81	6.8

Turnout 30.8 11.1

Folkestone Foord (3949)²

		vote	share
Copping B.*	PF	609	48.4
Marsh P.*	PF	517	-
Reeve R.	Lab	270	21.5
Worsley D.	Lab	231	-
Fletcher B.	Con	214	17.0
Salmon M.	Con	200	-
Robertson-Ritchie H.	LD	135	10.7
Kincaid			
Speller M. Ms.	LD	113	-
Williams H.	Ind	30	2.4

Turnout 31.5 26.9

Folkestone Harbour (3827)²

		vote	share
Wallace S. Ms.*	Con	505	38.6
Sanger E. Ms.*	Con	411	-
Stockham J.	Lab	400	30.6
Bingham P.	Lab	367	-
Walker L.	LD	262	20.0
Stewart A.	TUSC	142	10.8

Turnout 31.3 8.0

Folkestone Harvey Central (4457)²

		vote	share
Barker H.*	Con	539	39.1
Johnson D.*	Con	481	-
Keen N. Ms.	Lab	388	28.1
Le Fanu E.	Lab	328	-
Kay J.	LD	233	16.9
McLoughlin K. Ms.	Ind	220	15.9

Turnout 28.3 10.9

Folkestone Harvey West (3659)²

		vote	share
Bunting G.*	Con	883	55.2
Love R.*	Con	870	-
Shortall P.	Lab	374	23.4
Collins P.	Lab	353	-
McNeice R.	LD	342	21.4

Turnout 43.5 31.8

Folkestone Morehall (3244)²

		vote	share
Collier J.	Con	678	44.0
Monk P.*	Con	567	-
McNiece T.*	LD	495	32.1
Giri G.	LD	413	-
Sacre C. Ms.	UKIP	196	12.7
Blake R.	TUSC	172	11.2

Turnout 44.1 11.9

Folkestone Park (4880)³

		vote	share
Berry A. Ms.	Con	966	40.8
Allen T.	Con	940	-
Pascoe R.*	Con	802	-
Beaumont L. Ms.*	LD	569	24.0
McNeice A.	LD	428	-
Rolfe B. Ms.	LD	403	-
Copping P. Ms.	PF	336	14.2
Burt S.	Lab	279	11.8
Fagg W.	PF	258	-
McKenna F.	UKIP	217	9.2
Patterson S. Ms.	PF	200	-

Turnout 42.5 16.8

Folkestone Sandgate (3398)²

		vote	share
Holben J. Ms.*	Con	792	58.6
Bliss R.*	Con	791	-
Fuller G.	LD	559	41.4

Turnout 41.7 17.2

Hythe Central (4929)³

		vote	share
Dearden M.*	Con	1,381	58.6
Ewart-James A.*	Con	1,349	-
Lyons M.*	Con	1,336	-
Birch M. Ms.	LD	601	25.5
Roberts M. Ms.	LD	577	-
Reid I.	UKIP	374	15.9

Turnout 51.0 33.1

Hythe East (3421)²

		vote	share
Belcourt K. Ms.*	Con	954	51.1
Owen D.*	Con	922	-
Maskell D. Ms.	Green	616	33.0
Dowling P. Ms.	LD	297	15.9
Roberts S.	LD	248	-

Turnout 51.9 18.1

Hythe West (3463)²

		vote	share
Hayward S.*	Con	844	52.2
Peacock P.	Con	785	-
Matthews S.	LD	462	28.6
Briddock D.	LD	411	-
Hillyer M.	Lab	311	19.2
Murphy D.	Lab	301	-

Turnout 48.0 23.6

Lydd (4857)³

		vote	share
Goddard C.*	Con	1,102	42.4
Dawson V. Ms.*	Con	1,016	-
Hills A.*	Con	925	-
Walsh M.	Lab	527	20.3
Hart B.	Lab	473	-
O'Reilly P.	UKIP	402	15.4
Last E.	LD	341	13.1
Dawes T.	Ind	230	8.8

Turnout 42.4 22.1

Lympne & Stanford (1628)

		vote	share
Newlands S. Ms.*	Con	465	51.8
Plumstead D.	Ind	433	48.2

Turnout 56.0 3.6

New Romney Coast (2942)²

		vote	share
Lawrence S.*	Con	639	48.4
Simmons P.	Con	558	-
Loseby V. Ms.*	LD	500	37.9
Noyes A. Ms.	LD	369	-
Nevard W. Ms.	UKIP	182	13.8

Turnout 44.7 10.5

New Romney Town (2798)²

		vote	share
Wimble W.	Con	675	55.3
Stephenson D.*	Con	617	-
Beardsley M.	Lab	336	27.5
Dimmock I.	Ind	209	17.1

Turnout 39.3 27.8

North Downs East (6562)³

		vote	share
Godfrey D.*	Con	1,648	58.4
Peall S.*	Con	1,452	-
Martin P.*	Con	1,445	-
Jack N.	UKIP	696	24.7
Matthews T.	LD	479	17.0

Turnout 39.4 33.7

North Downs West (3611)²

		vote	share
Hollingsbee J. Ms.*	Con	1,237	71.1
Monk D.*	Con	1,031	-
Van Der Leij E. Ms.	LD	504	28.9

Turnout 50.5 42.1

Romney Marsh (1849)

		vote	share
Clifton-Holt A.*	Con	525	69.9
Suckling D.	Lab	226	30.1

Turnout 41.6 39.8

Tolsford (1641)

		vote	share
Carey S. Ms.*	Con	748	82.8
Matthews S. Ms.	LD	155	17.2

Turnout 56.6 65.7

