





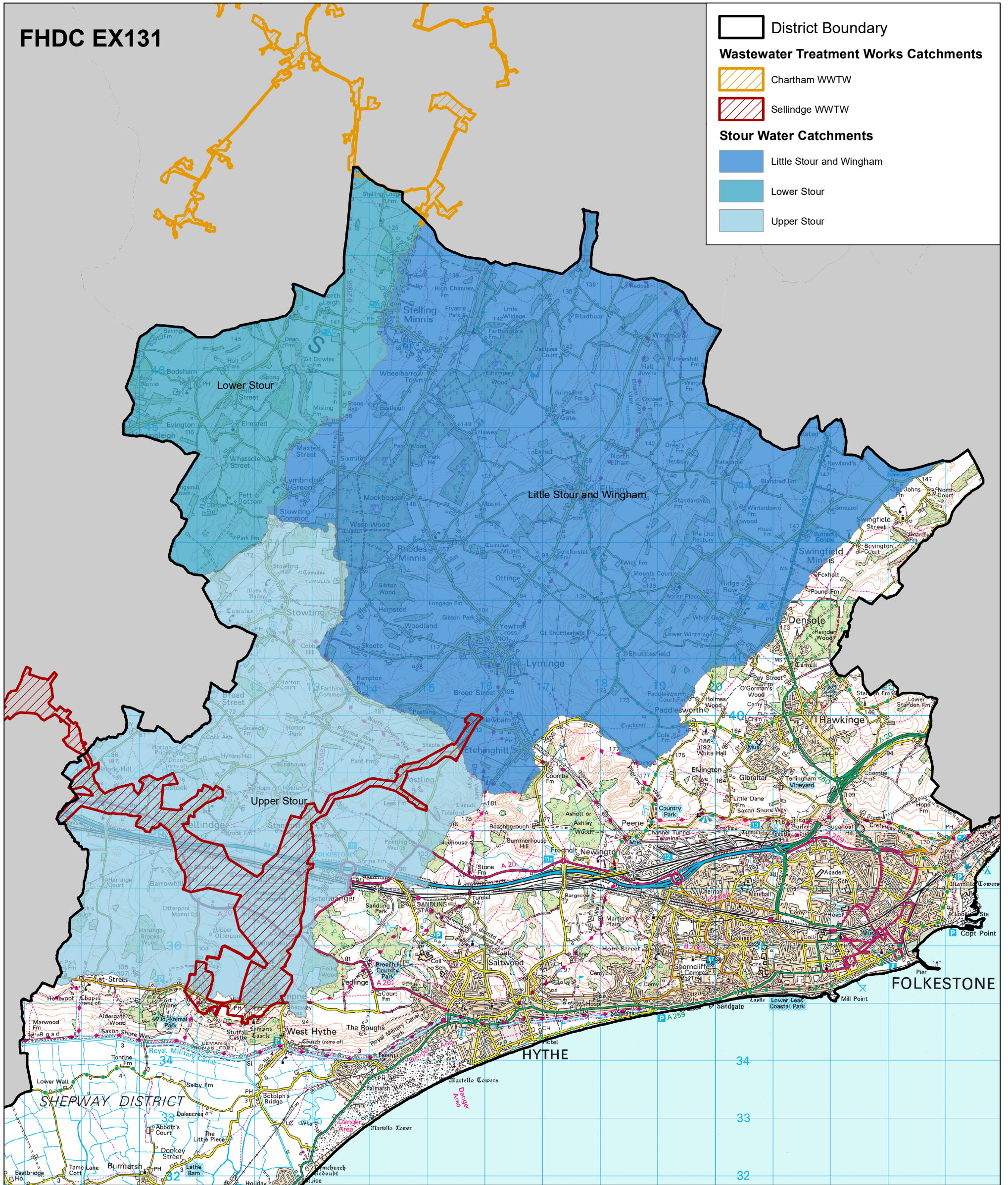


# Stour Operational Catchments and Chartham and Sellindge Wastewater Treatment Works Catchments

FHDC EX131

-  District Boundary
- Wastewater Treatment Works Catchments**
-  Chartham WWTW
-  Sellindge WWTW
- Stour Water Catchments**
-  Little Stour and Wingham
-  Lower Stour
-  Upper Stour

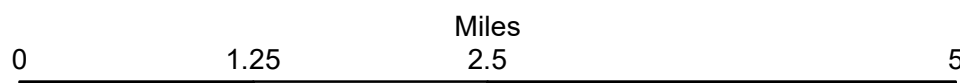


Drawn date:  
23 Aug 2021

Drawn by:  
Brian Harper

Drawing ref:  
1642/PPS/AT

Contains Ordnance Survey data  
© Crown copyright and database right  
Folkestone & Hythe Council 100019677 - 2021



Drawn at 1:65,000 on A3