



Otterpool Park Environmental Colour Assessment

March 2022

FARRELLS

Contents

Introduction	3
Site Context	4
Strategic Views	5
Character Areas	8
Sellindge Plateau Colour Guidance	13
Aldington Ridge Colour Guidance	18
NCS : Natural Colour System	19

Introduction



Farrells have been appointed to produce a colour guidance document for the Otterpool Park Development.

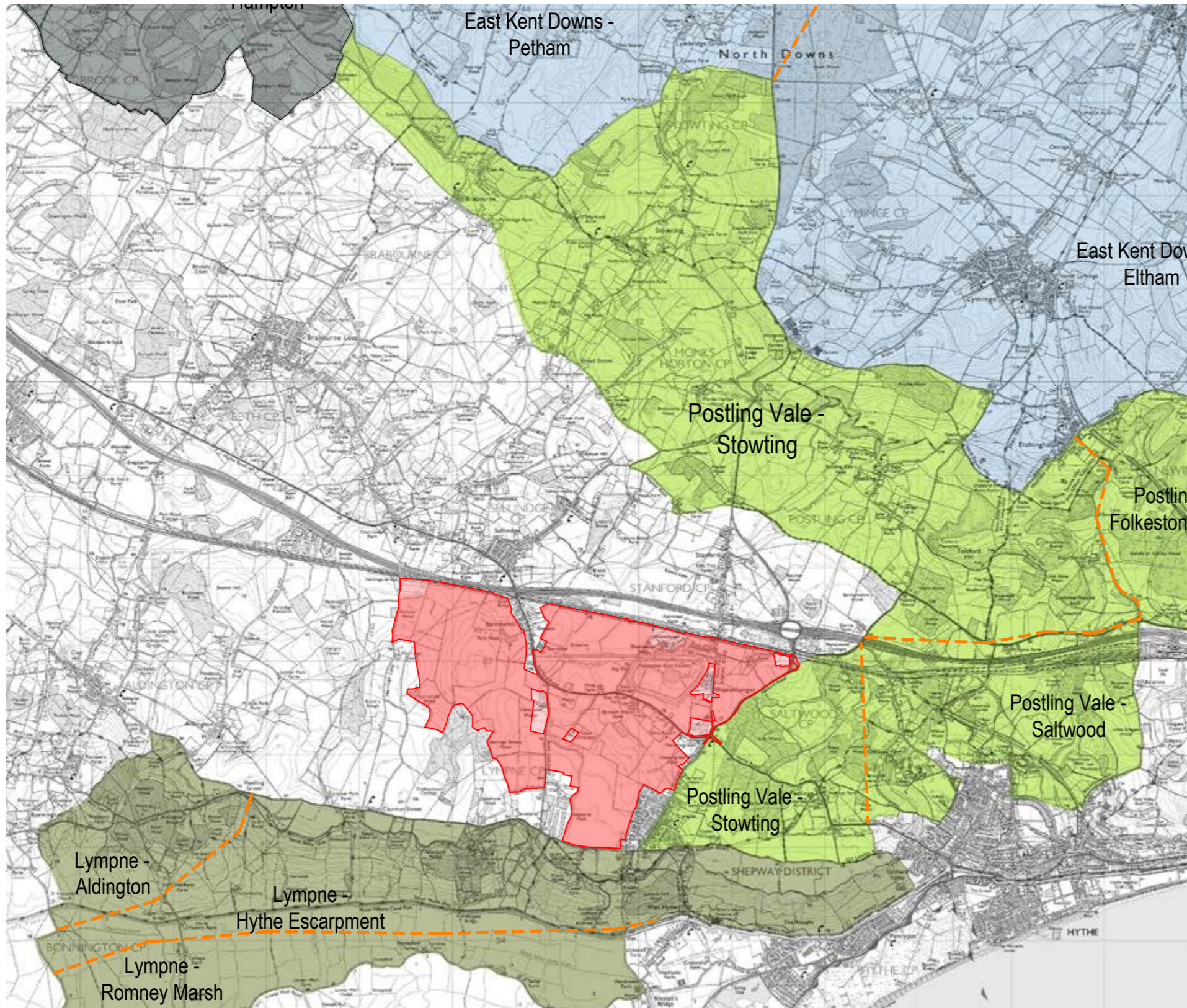
This document is based on the visual Environmental Colour Assessment of the site and area, conducted during multiple visits through 2020 and 2021. Over this period, the naturally changing character of site has been considered through a full range of seasons and weather conditions.

The site includes a very large area of landscape that can be seen from many distant locations in the surrounding context, the most significant and sensitive of these are the views from the North Downs: Locations 1 and 2, from the Broad Downs and the Farthing Common viewpoints are included within the context section.

The site also has internal character areas that have been considered. While there certainly are many layers of specific and distinct character relating to each neighbourhood at differing scales, there are also many similarities that are generally shared across the development area. While this document provides a palette or range of appropriate integration colours and guidance on their use, there should always be a large degree of freedom given to individual buildings and feature elements to be expressed using complementary and highlight colours.

Understanding the contextual sensitivities of the site leads to a very clear set of guiding principles that have the potential to create an integrated and legible environment with huge scope for variety and creativity.

Surrounding Character of the KDAONB



Site Context

The site is located on the edge of the greensand escarpment, outside but surrounded on three sides by the designated Kent Downs AONB.

To the west lies the wide open landscape of Aldington and the Stour valley. To the east are Postling Vale, Pedlinge and Saltwood, which feel generally more enclosed by trees and topography than the western side of the site.

The northern side of the site is defined by the M20 corridor, Sellindge and Stanford. Large open landscapes with rising levels towards the North Downs, Farthing Common and Bradbourne Lees.

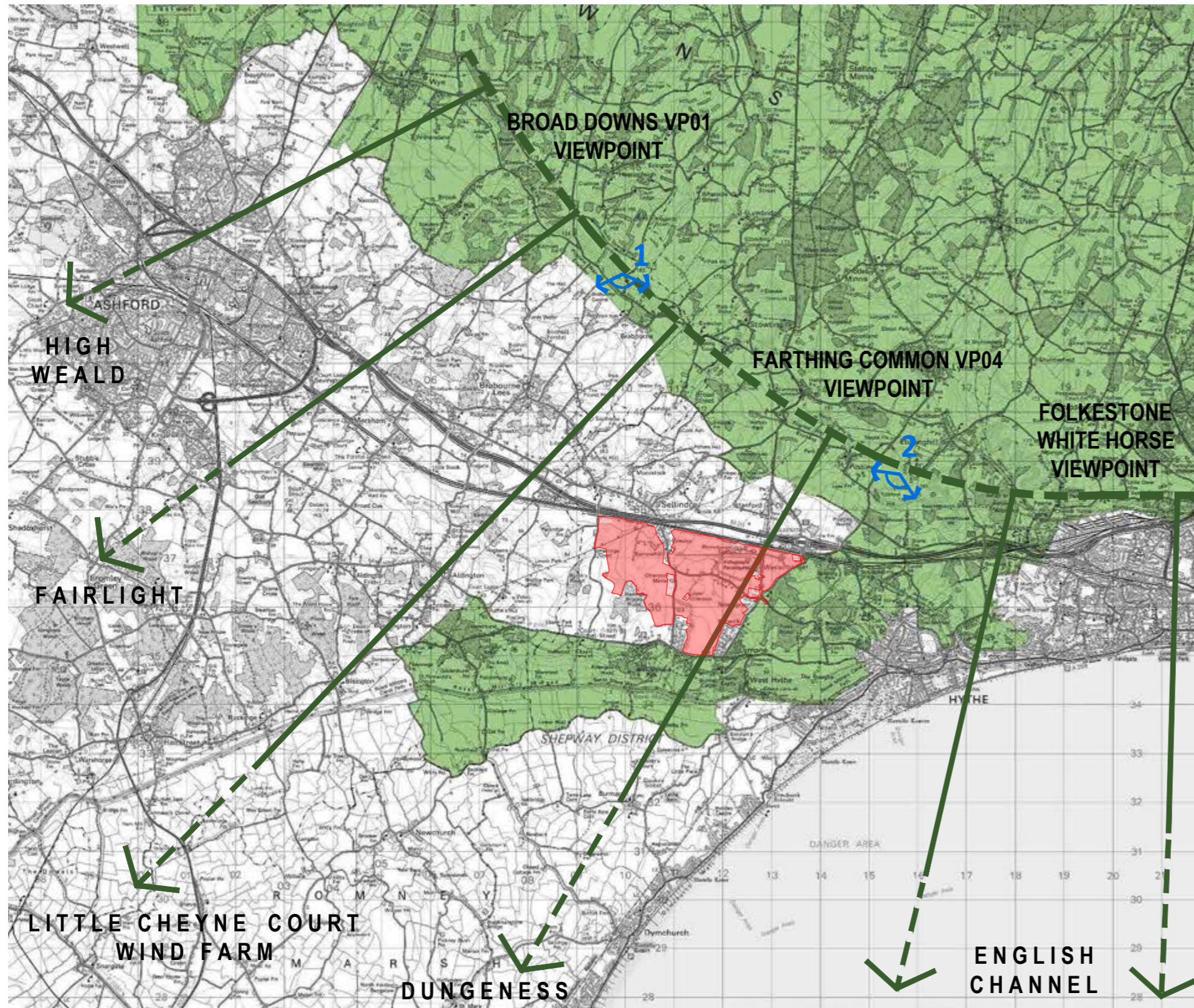
The southern edge is the Lympne and Hythe Escarpment area: Heavily Wooded with limited access, but a number of locations to allow remarkable views across the Romney Marsh area, out to the coast and Channel.

This context limits the long views of the site from all but the northern side of the site, but neighbouring areas do offer a range of characters to respond to architecturally.

Legend: Character Areas

- Stour Valley
- East Kent Downs
- Postling Vale
- Lympne

Site Context : Strategic Views

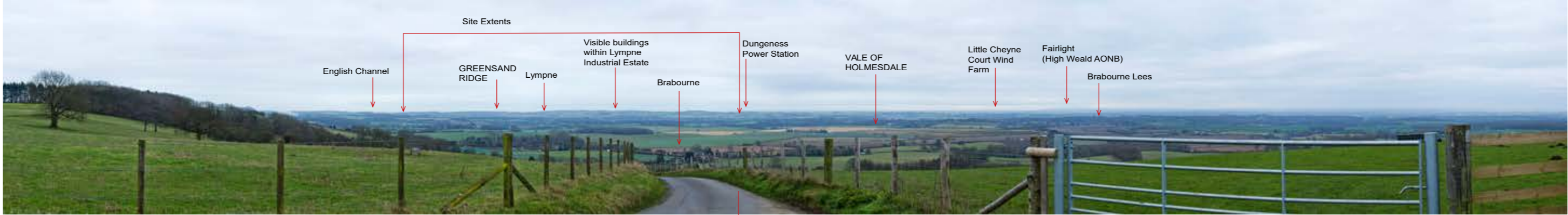


Legend: Character Areas

- Viewing Location
- Otterpool Park Site
- North Down Escarpment

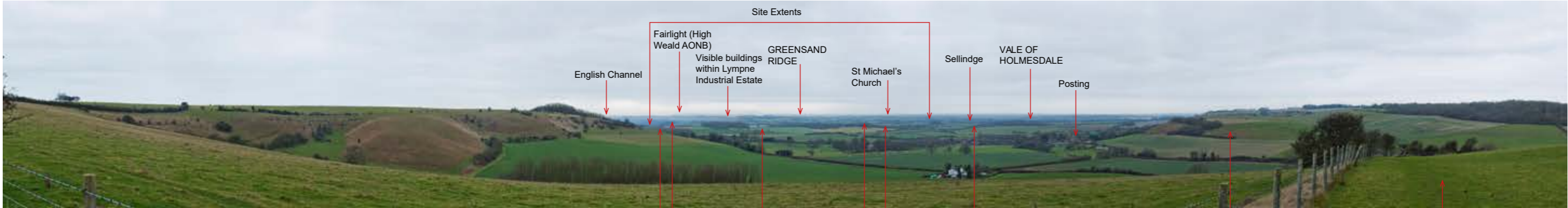
A primary design consideration will be the site relationship to the AONB and views from the North Downs.

Site Context : Strategic Views



Viewpoint 1

North Downs Way,
National Trail



Viewpoint 2

Lympne
Motorway Maintenance Depot
M20 & Motorway Service Station
Barrow Hill
M20
High Voltage Powerlines
North Downs Way,
National Trail
North Downs Way,
National Trail

At this distance, the hues or intensity of specific colours are reduced and tinted by light and atmospheric effects such as moisture, dust particles and cloud.

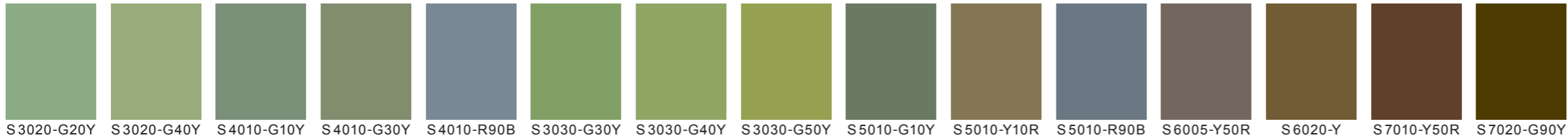
As can be confirmed by the colour samples to the right, the colours observed at this distance do not accurately represent the actual material colours on site, as perceived from a closer distance.

For this reason, we need to select integration colours based on samples taken from as close a distance as is possible.

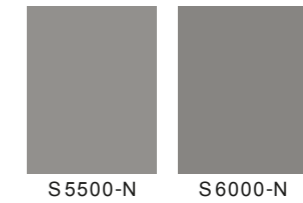


Views and Townscape

EXISTING COLOUR PALETTE BEYOND AONB BOUNDARY



TONALITY OF
DISTANT
LANDSCAPE
LOOKING SOUTH



The study above is an extract from the document "Guidance on the selection and use of colour in development" for the Kent Downs Area of Outstanding Natural Beauty.

Page 42 : The existing colour palette looking south from the "Postling Scarp and Vale" character area.

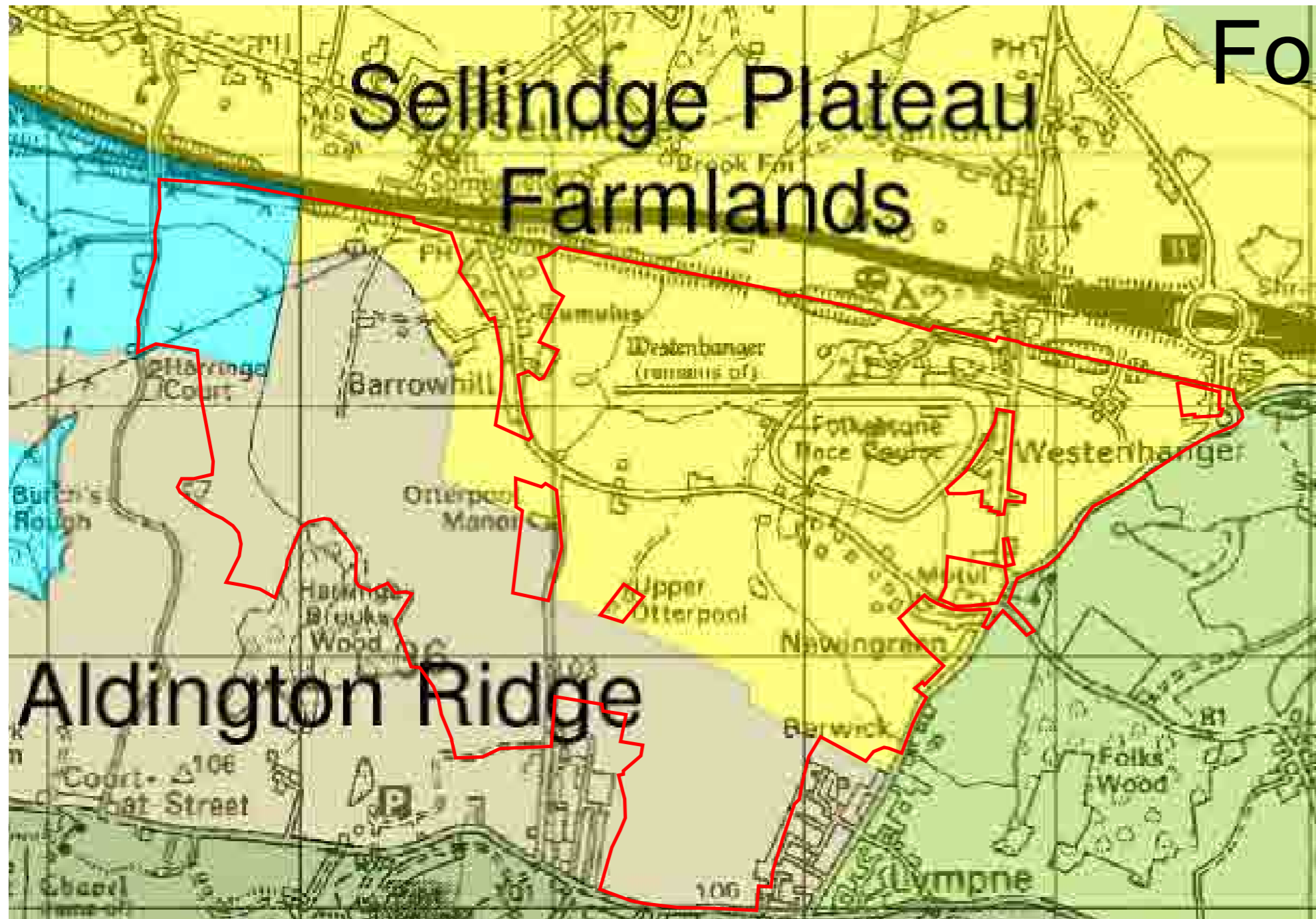
While the visual assessment process does require a degree of personal judgement and conversion to NCS samples adds an additional percentage of tolerance, the result of our study should broadly confirm the existing colour palette above.

Due to the reality that actual colours are significantly affected by ambient daylight, direct sunlight, atmospheric effects, surface texture, reflectivity and the surrounding context, there needs to be a wide degree of tolerance allowed.

At the same time, the palette does conform to a neutral grey tone range.

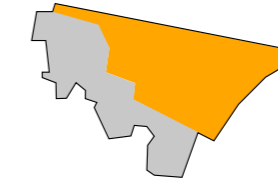
As long as any additional colours sit within this tonal range, the colours are likely to integrate into the existing palette without creating a sharp or noticeable contrast.

Character Areas

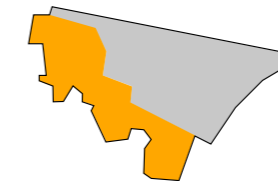


The site is primarily defined by two character areas:

1. Sellindge Plateau



2. Aldington Ridge

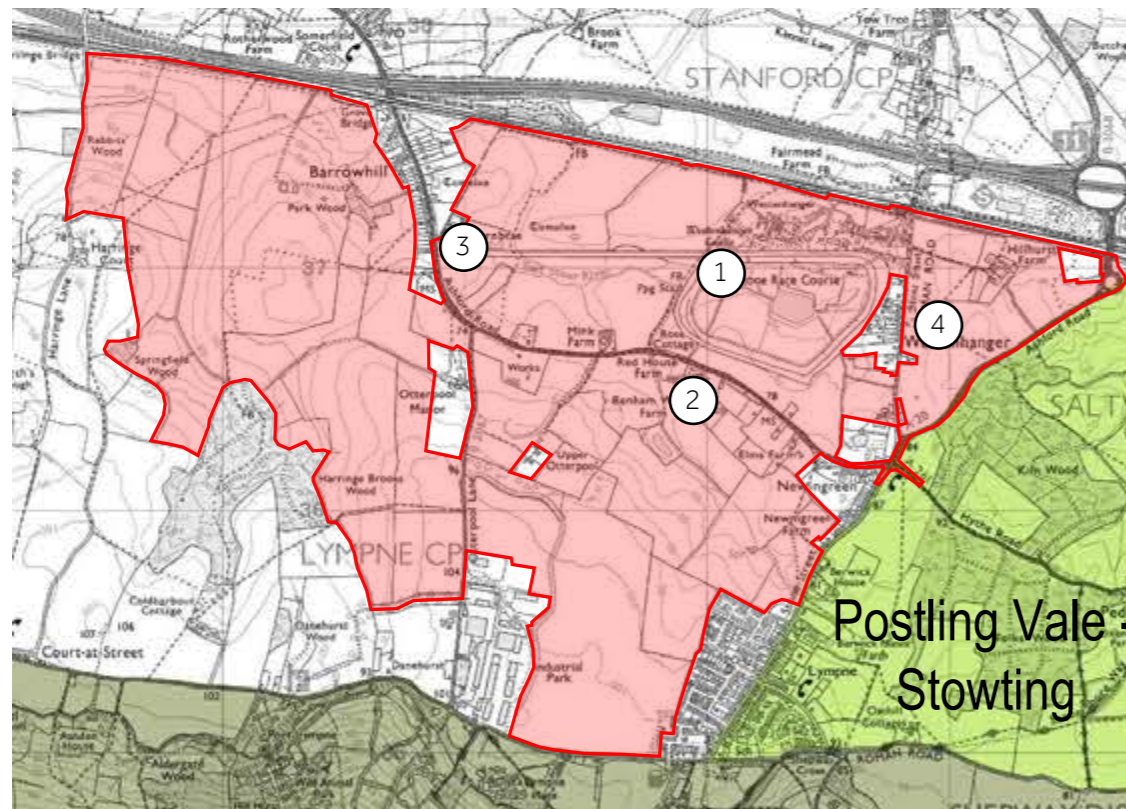
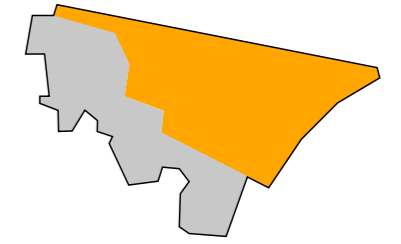


There are only very, very subtle colour differences between these areas. The north eastern area of the site (Sellindge Plateau) tends to be very slightly lighter in tone and has a slightly warmer or more yellow hue to the landscape than the Aldington Ridge area which tends to be more darker and have a cooler or blue/green tint in comparison.

This may be the result of the greensand vs chalk geology or the proximity to coastal vs North Downs landscapes.

In colour terms however, the overall site does share more in common than any clear differences. Variety can be experienced on a more localised level in areas such as the Stour River valley, Barrow Hill, Westenhanger Castle, Stone Street and the Lympne area of Aldington Road.

Sellindge Plateau : Landscape Samples



①



View to North from Ashford Road



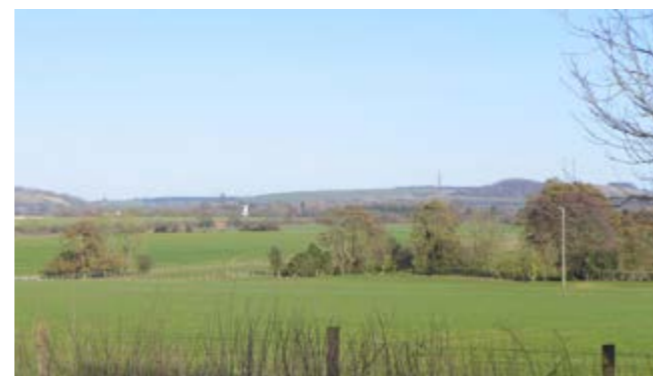
②



View to South from the Racecourse



③



View to North from Barrow Hill



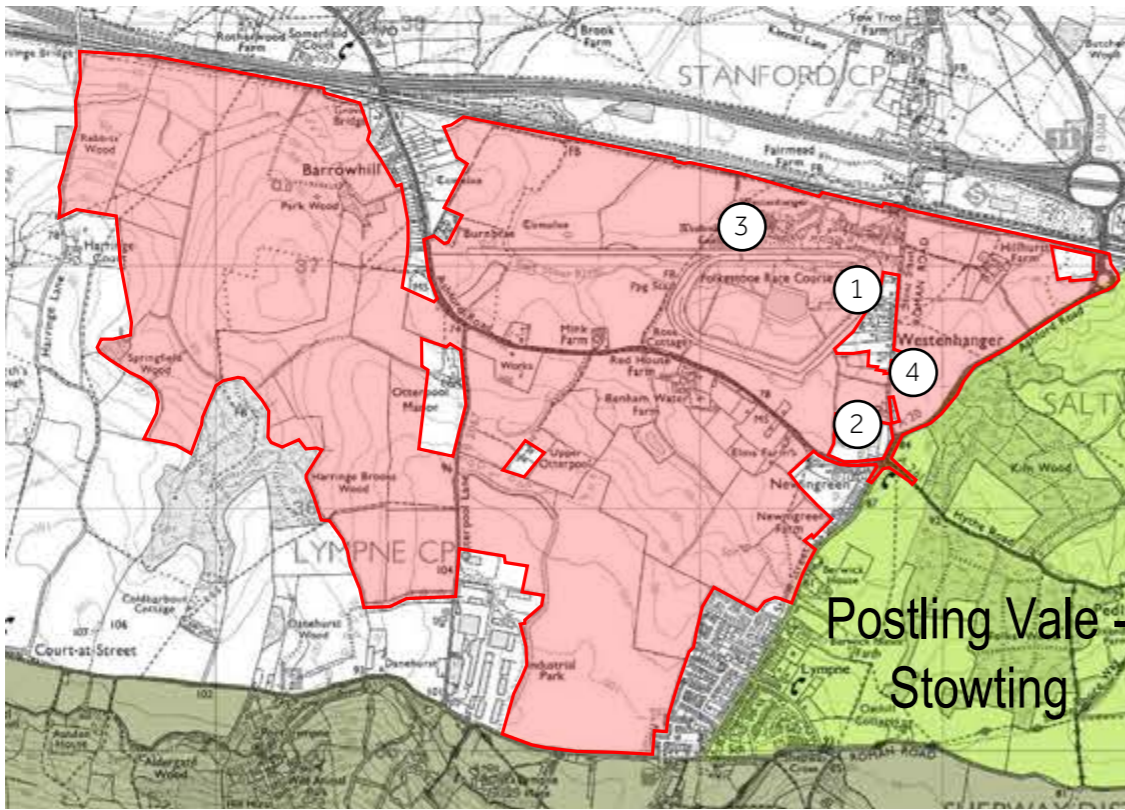
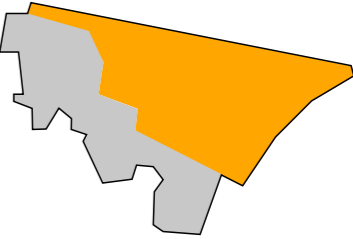
④



View to North from Stone Street



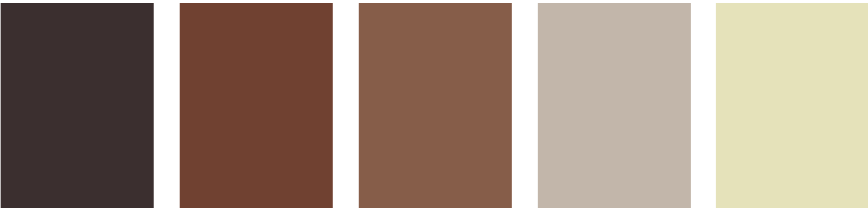
Sellindge Plateau : Built Form Samples



Cottage at Westenhanger Station



Detail of Terraces, Stone Street



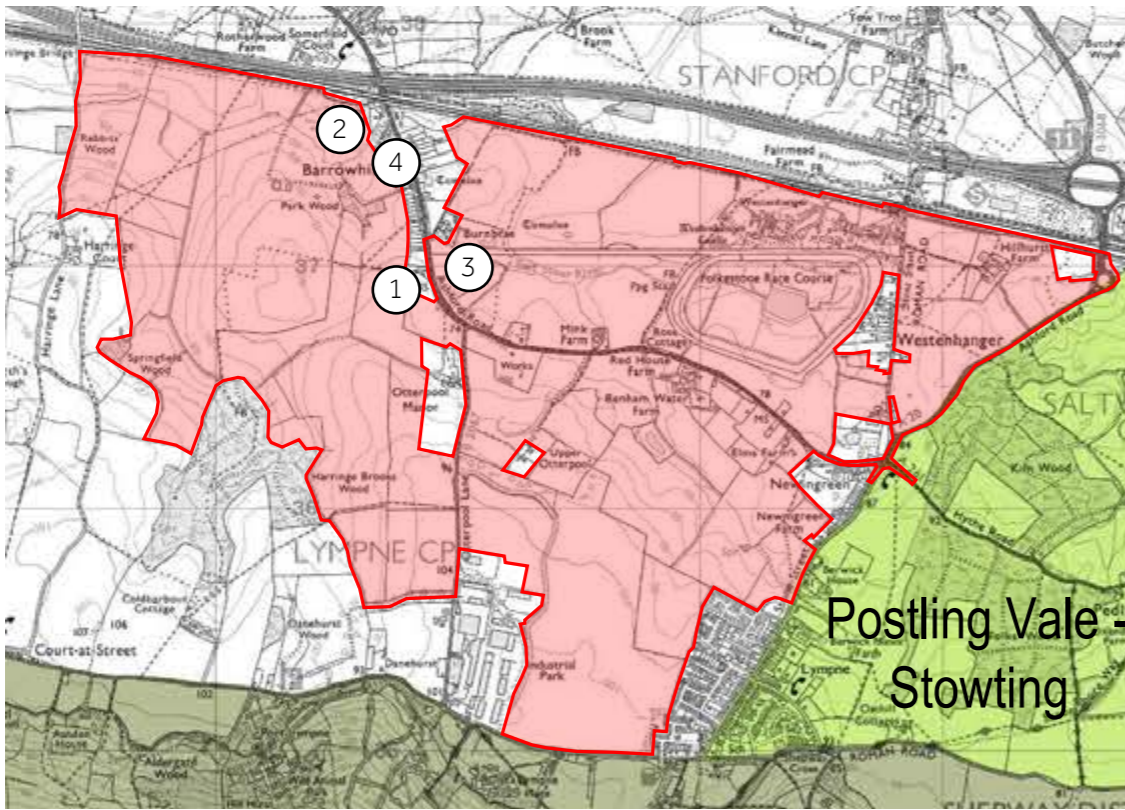
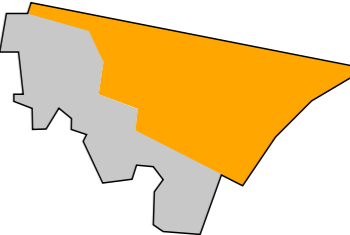
Westenhanger Castle



View to North from Stone Street



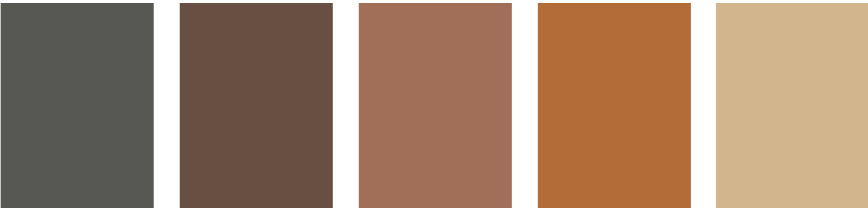
Sellindge Plateau : Built Form Samples



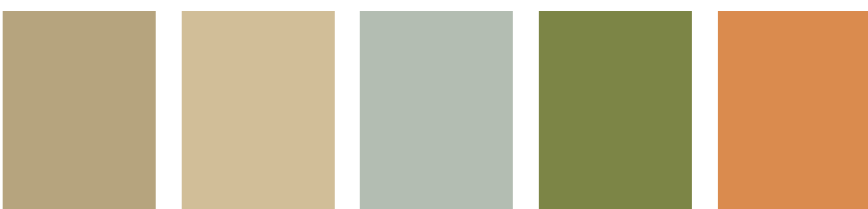
View to North, Barrow Hill



View within East Stour area, Barrow Hill



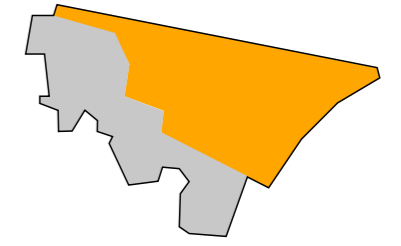
View to East from Barrow Hill



Detail, Barrow Hill



Sellindge Plateau : Developed Colour Palette



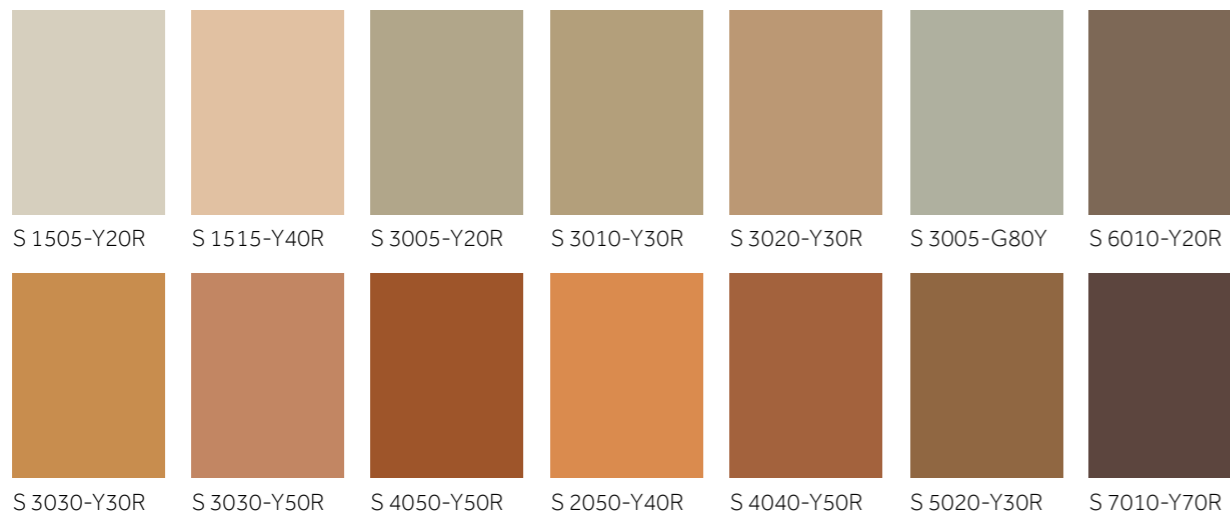
Existing Landscape Hues



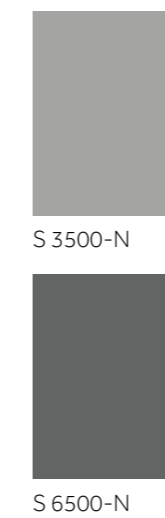
Neutral Greys



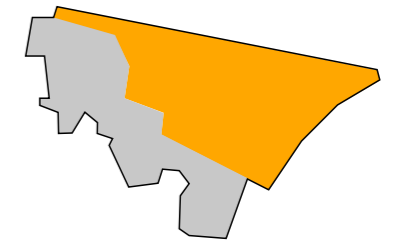
Existing Building Hues



Neutral Greys



Sellindge Plateau : Colour Guidance



Neutral Grey



S 2500-N



S 4000-N



S 7500-N

Integration Colour Range



S 1515-Y40R



S 3010-Y30R



S 3020-Y30R



S 3030-Y30R



S 3030-Y50R



S 4050-Y50R



S 6030-Y60R



S 7010-Y70R



S 7020-G50Y

Highlights



S 1505-Y20R



S 1510-Y30R



S 0502-Y



S 2050-Y40R



S 1515-Y40R



S 0502-Y50R



S 6010-Y70R



S 6020-G50Y

Complementary Colour Range



S 5030-B30G



S 2030-B10G



S 2040-B70G



S 2030-B10G



S 6020-R60B



S 2020-R10B

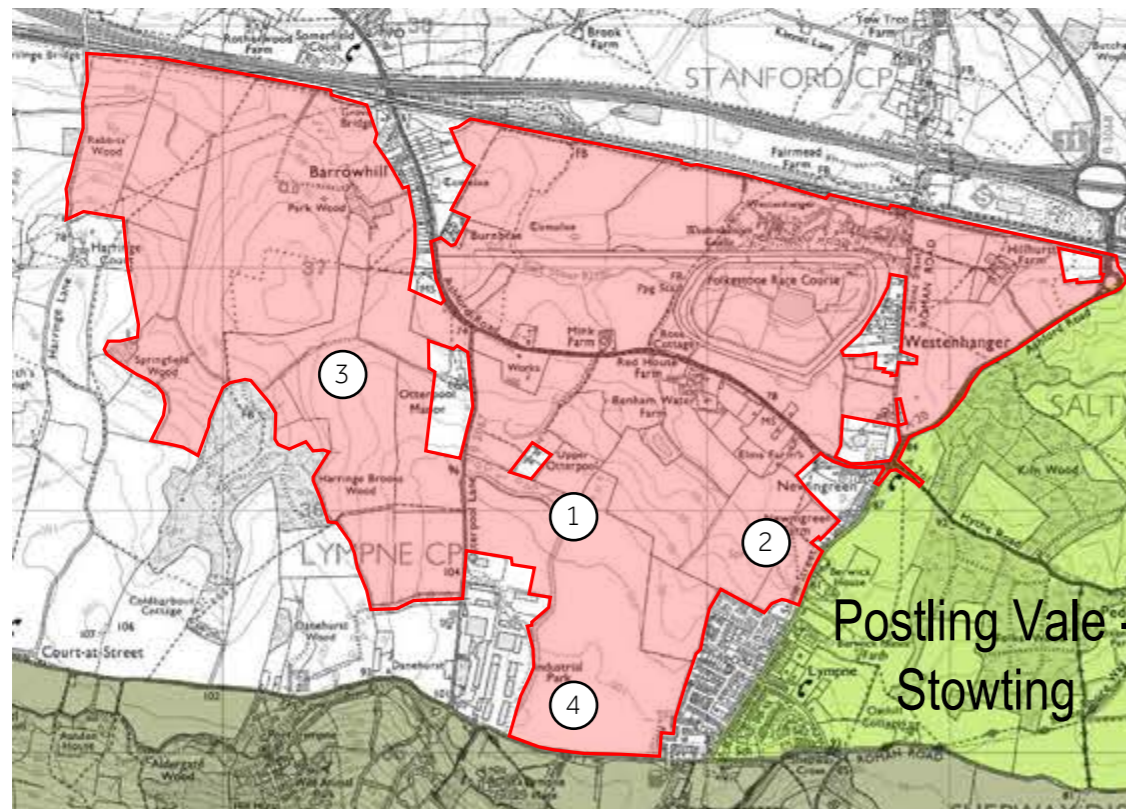
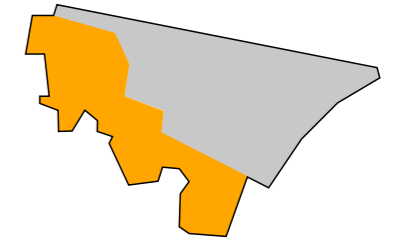
Selected tonal range within the box area is suitable for North facing façades and any elements that will be visible from the Kent Downs Area of Outstanding Natural Beauty. Due to the natural "softening" of hue and chromaticity over long distances, the tonal value of colour will be the most important component to consider when making decisions. Our recommendation is to keep colour choices within the **NCS S 6020-** and **NCS S 7020-** darkness and intensity range.

Highlight colours are expected to be used sparingly, with the predominant facades conforming to the integration range.

Complementary colours offer a wider scope for contrast and accent on south facing façades, courtyards, entrances and similar areas.



Aldington Ridge : Landscape Samples



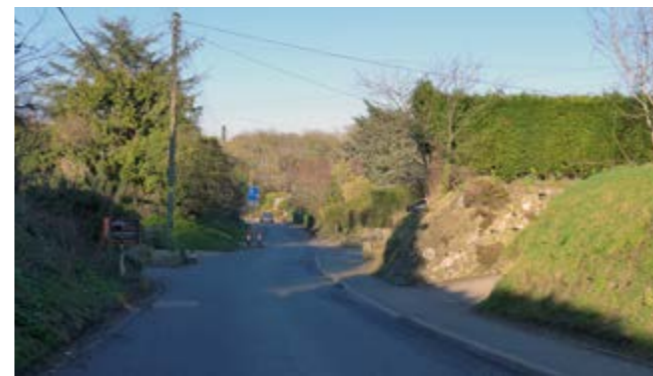
①



View to North from Lympe



②



View to North along Stone Street



③



View to North from Port Lympe Reserve



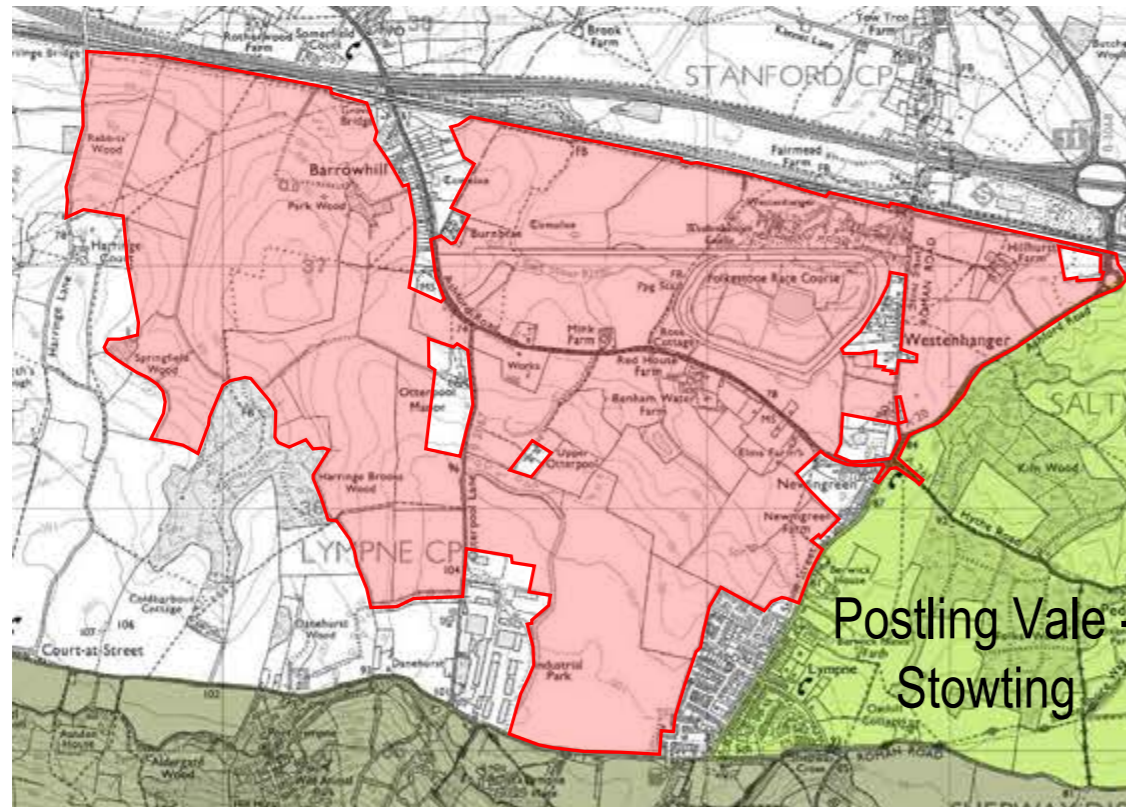
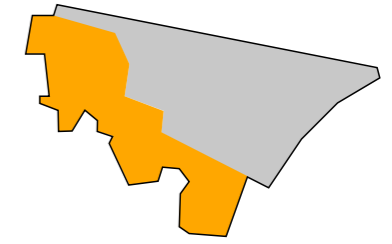
④



View to South from Aldington Road, Lympe



Aldington Ridge : Built Form Samples



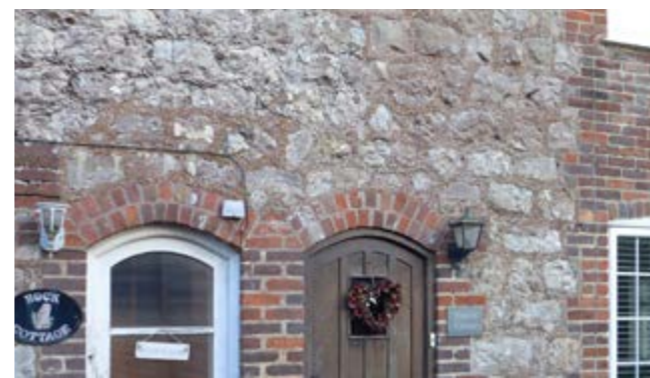
①



View to East from Aldington Road



②



Detail of Cottage, Lympe



③



View to North from Port Lympe Reserve



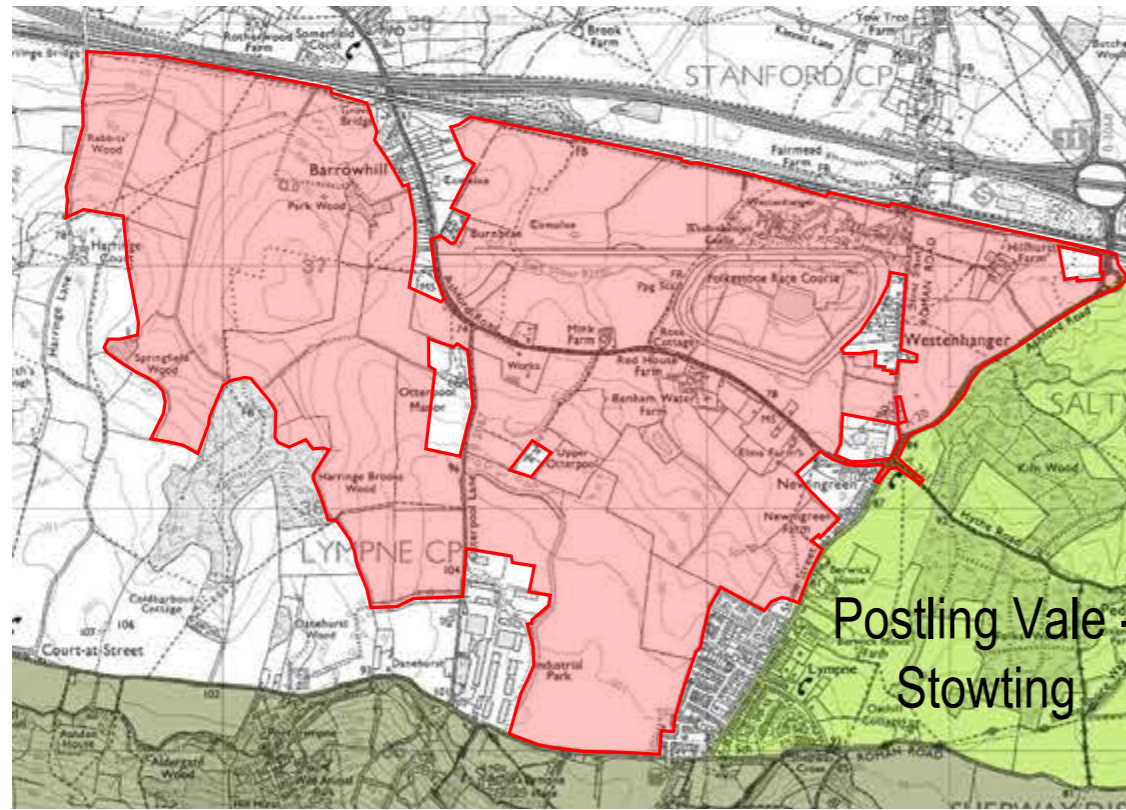
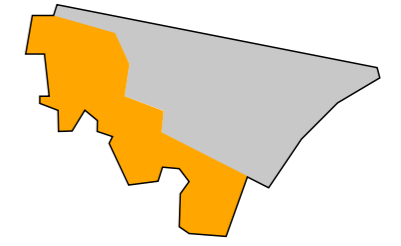
④



Aldington Road, Lympe



Aldington Ridge : Built Form Samples



①



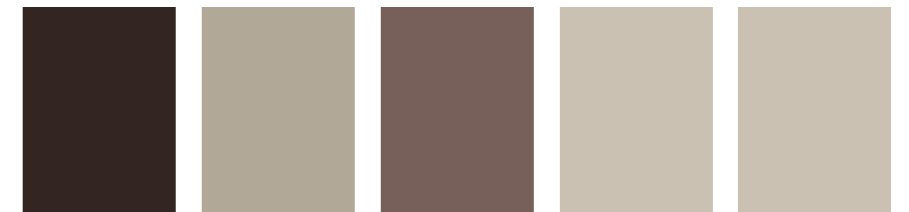
Stone Street



②



Stone Court



③



Otterpool Manor



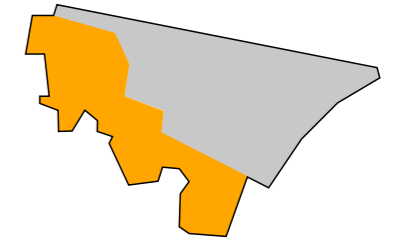
④



Folks Woods Way



Aldington Ridge : Developed Colour Palette



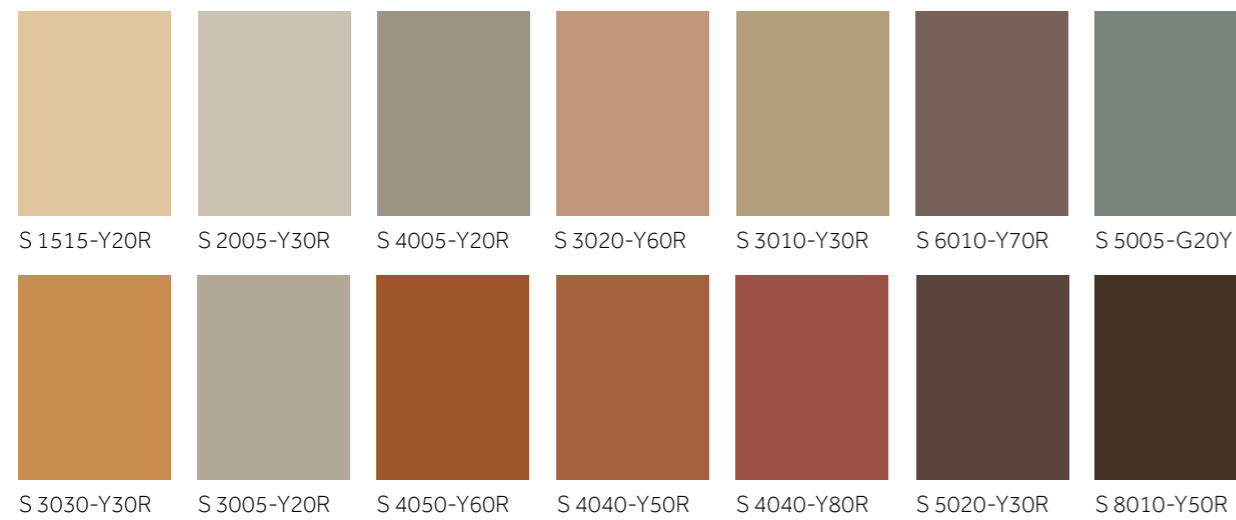
Existing Landscape Hues



Neutral Greys



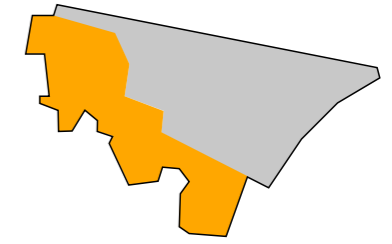
Existing Building Hues



Neutral Greys



Aldington Ridge : Colour Guidance



Neutral Grey



S 3000-N



S 5000-N



S 7500-N

Integration Colour Range



S 2005-Y30R



S 1515-Y20R



S 3010-Y30R



S 4050-Y60R



S 4040-Y50R



S 4040-Y80R



S 8010-Y50R



S 5020-Y30R



S 5005-G20Y

Highlights



S 1505-Y20R



S 2005-Y30R



S 0502-Y



S 3040-Y40R



S 1515-Y40R



S 0502-Y50R



S 4010-Y50R



S 4020-Y50R

Complementary Colour Range



S 5030-B30G



S 2030-B10G



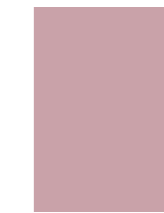
S 2040-B70G



S 2030-B10G



S 6020-R60B



S 2020-R10B

Selected tonal range within the box area is suitable for North facing façades and any elements that will be visible from the Kent Downs Area of Outstanding Natural Beauty. Due to the natural "softening" of hue and chromaticity over long distances, the tonal value of colour will be the most important component to consider when making decisions. Our recommendation is to keep colour choices within the **NCS S 6020-** and **NCS S 7020-** darkness and intensity range.

Highlight colours are expected to be used sparingly, with the predominant facades conforming to the integration range.

Complementary colours offer a wider scope for contrast and accent on south facing façades, courtyards, entrances and similar areas.



NCS : Natural Colour System

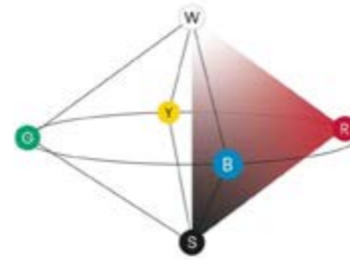
ELEMENTARY COLOURS

The Natural Colour System is based on the six elementary colours which are perceived by human beings as being "pure". E.g. pure green is not perceived to be bluish or yellowish, nor is pure yellow perceived to be greenish or reddish. We can describe all 10 million colours that we can perceive with the six elementary colours.



NCS COLOUR SPACE

NCS - Natural Colour System is illustrated in a three-dimensional colour space. Within this three-dimensional model, all imaginable surface colour can be plotted and given an NCS Notation.



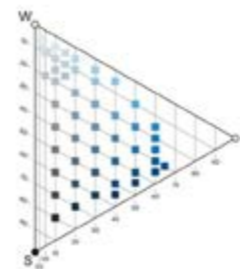
NCS COLOUR CIRCLE

The NCS Colour Circle is a horizontal section through the middle of the colour space. The hue is described as the relation to one or two of the four chromatic elementary colours in the colour circle.



NCS COLOUR TRIANGLE

The NCS Colour Triangle is a vertical section through the colour space. For each hue in the NCS Colour Circle, there is one NCS Colour Triangle.



NCS NOTATION

The colour NCS S 4030-R90B has the nuance 4030, i.e. 40% in blackness and 30% in chromaticness. The whiteness is then: $100\% - 40\% - 30\% = 30\%$

[Click here](#) for a complete list of NCS Literature References.

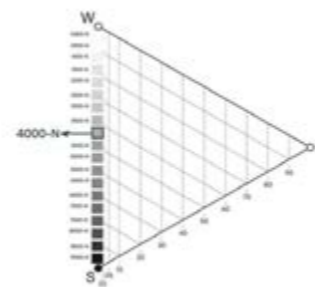
NEUTRAL COLOURS

Neutral colours, pure grey colours, do not have a hue and are only given nuance notations followed by - N for neutral.

EXAMPLE

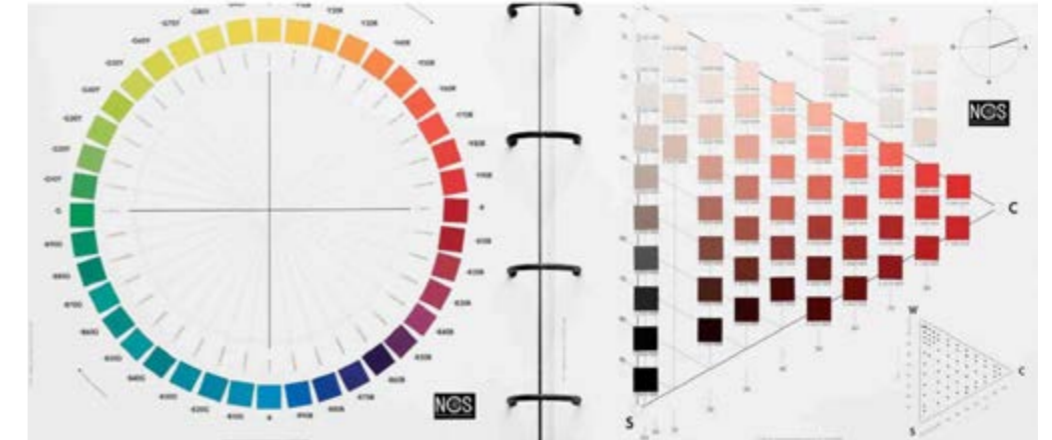
The colour 4000-N has 40% blackness and 0% chromaticness. The whiteness is then: $100\% - 40\% = 60\%$

NCS S 4030-R90B
 Blackness (s) Chromaticness (c) Nuance Hue



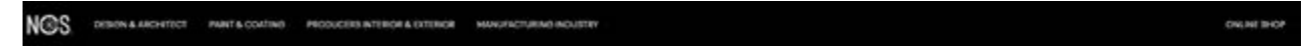
NCS Colour information from :

<https://ncscolor.com/ncs/>



The NCS System

The foundation of our products is NCS - Natural Colour System®, a cross-industry colour system used around the world for colour communication between designers and manufacturers, retailers and customers. Since the NCS System is based on how we perceive colours visually the system allows you to describe any imaginable surface colour and be given an NCS Notation. This has made the colour system a global standard for the definition, quality assurance, and communication of colour.



Describe any imaginable surface colour with NCS

NCS - Natural Colour System® is a scientifically based colour system that allows for accurate cross-industrial colour communication for designers and manufacturers, retailers and customers. Since NCS is based on how we perceive colour visually, the system allows you to describe colour on all imaginable surfaces. This has made the colour system a global standard for definition, quality assurance and communication of colour. All surface colours can be described with a NCS Notation.

NCS System in 3 steps:

- 1 Find the Hue = R90B
- 2 Find the Nuance = 4030
- 3 Complete the NCS Notation = 4030-R90B

NCS S 4030-R90B

FARRELLS

London

7 Hatton Street
London
NW8 8PL

Tel: +44 (0)20 7258 3433
enquiries@farrells.com

Hong Kong

Suites 1301-02,
625 King's Road
North Point
Hong Kong

Tel: +852 2523 0183
enquiries@farrells.com.hk

Shanghai

Unit 1603,
Shanghai Time Square Office Tower,
93 Huai Hai Zhong Road, Shanghai,
PRC, 200021

Tel: +86 (21) 5302 9738
enquiries@farrells.com.cn