

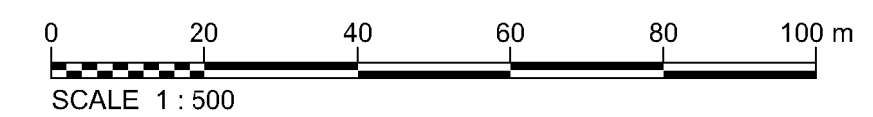
APPENDIX M Committed Highway Schemes

NOTES

1. TO BE READ IN CONJUNCTION WITH THE APPENDICES IN THE 700 SERIES.
2. FOR TIE IN DETAILS REFER TO APPENDIX 7/1.

KEY

- DCO BOUNDARY
- ▨ PAVEMENT TYPE - PT A/B/C/D/E/F
- ▨ PAVEMENT TYPE - PT2A/B/C/D/E/F
- ▨ PAVEMENT TYPE - PT1A
- ▨ PAVEMENT TYPE - PT2A
- ▨ PAVEMENT TYPE - PT3A
- ▨ PAVEMENT TYPE - PT4A
- ▨ PAVEMENT TYPE - PT5A
- ▨ PAVEMENT TYPE - PT6A
- ▨ PAVEMENT TYPE - PT7A
- ▨ PAVEMENT TYPE - PT8A
- ▨ PAVEMENT TYPE - PT10A
- ▨ PAVEMENT TYPE - PT11A
- ▨ PAVEMENT TYPE - EPT3
- ▨ PAVEMENT TYPE - EPT4
- ▨ PAVEMENT TYPE - EPT5
- ▨ PAVEMENT TYPE - EPT6
- ▨ PAVEMENT TYPE - EPT7
- ▨ PAVEMENT TYPE - EPT8
- ▨ PAVEMENT TYPE - EPT9
- ▨ BRIDGE DECK - BD1
- ▨ TIE-IN OVERLAY DETAILS TO BE FINALISED ON RECEIPT OF EXISTING PAVEMENT SURVEY DATA
- ▨ AREA OF EXISTING PAVEMENT TO BE BROKEN UP
- ▨ AREA OF PERFORATED PAVEMENT



| | | | | | | | | | |
|--|--|--|--|--|--|--|--|--|--|
| | | | | | | | | | |
| | | | | | | | | | |
| | | | | | | | | | |

| | | | | | | |
|-----|----------|------------------------------------|-------|---------|----------|----------|
| PO0 | 03/08/17 | FIRST ISSUE | PA | PT | AI | IC |
| PO1 | 15/11/17 | SUITABLE FOR CONSTRUCTION APPROVAL | PA | JH | PH | PH |
| Rev | Date | Description of revision | Drawn | Checked | Reviewed | Approved |

DRAWING STATUS

Fit for Construction Approval

CLIENT

CONTRACTOR

 JOINT VENTURE

CONTRACTOR CONSULTANT

 Tower Bridge Court, 224/226 Tower Bridge Road, London, SE1 2UP
 Tel:+44(0)20 7403 3330 Fax:+44(0)20 7939 1418
 www.jacobs.com

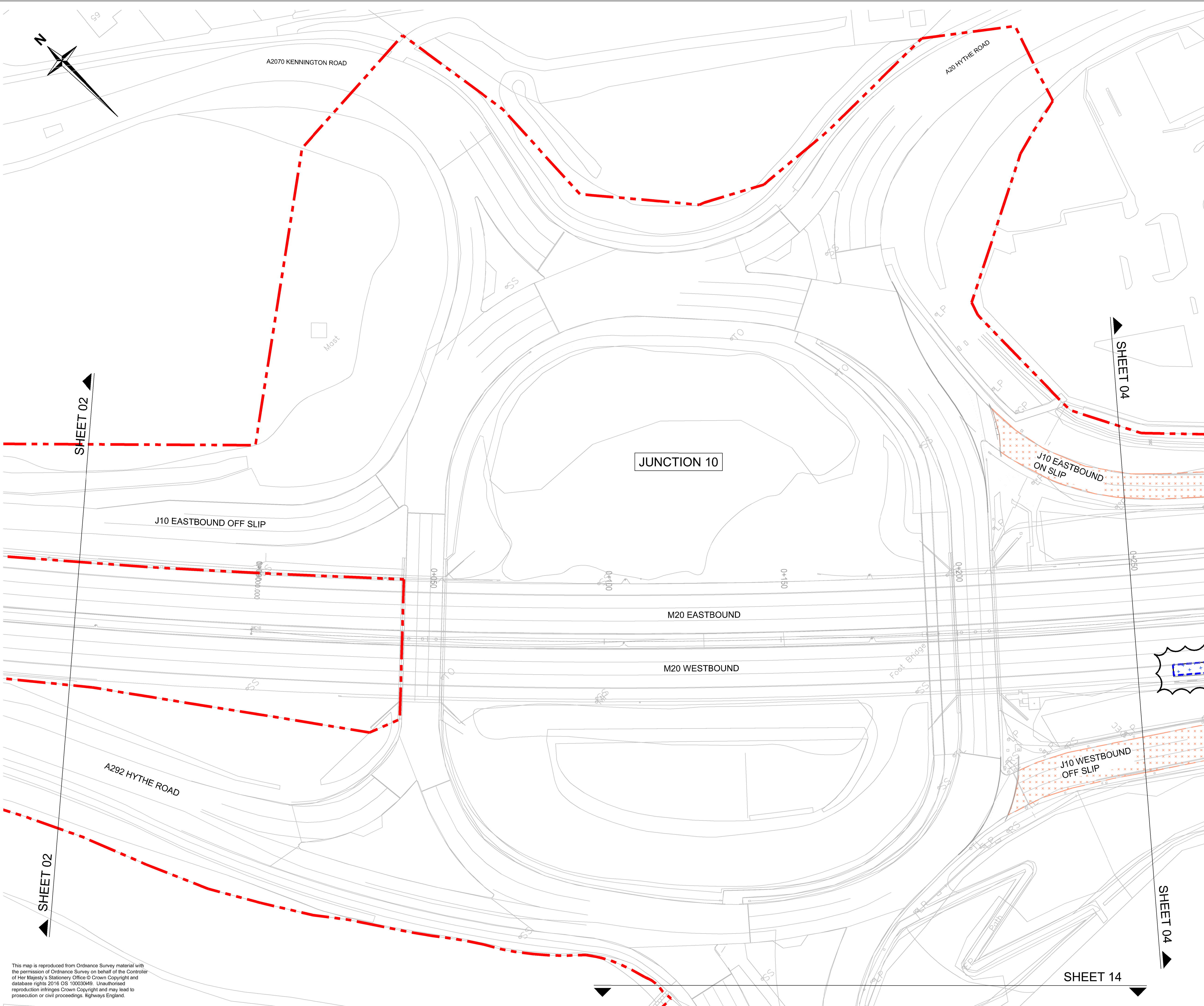
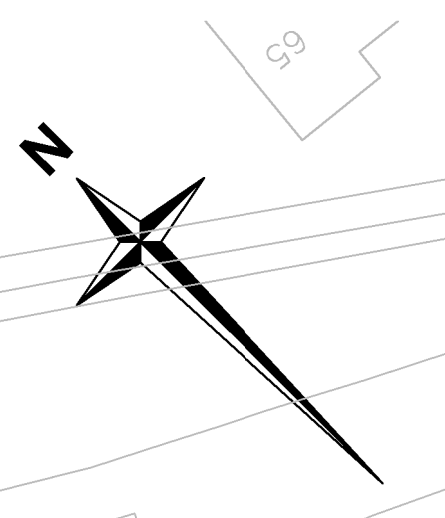
SCHEME TITLE
M20 JUNCTION 10A

DRAWING TITLE
ROAD PAVEMENTS
GENERAL ARRANGMENT
SHEET 3 OF 18

| | |
|---------------------------|-------------------------|
| DRAWING UNITS U.N.O. | SCALE AT A1 (841x594mm) |
| DIMENSIONS IN MILLIMETRES | 1:500 |
| LEVELS IN METRES | |

DRAWING No. HE514442-JAC-HPV-00-DR-CH-1003 REV. P01

This drawing is not to be used in whole or part other than for the intended purpose and project as defined on this drawing. Refer to the contract for full terms and conditions.



This map is reproduced from Ordnance Survey material with the permission of Ordnance Survey on behalf of the Controller of Her Majesty's Stationary Office © Crown Copyright and database rights 2016 OS 10003049. Unauthorised reproduction infringes Crown Copyright and may lead to prosecution or civil proceedings. Highways England.

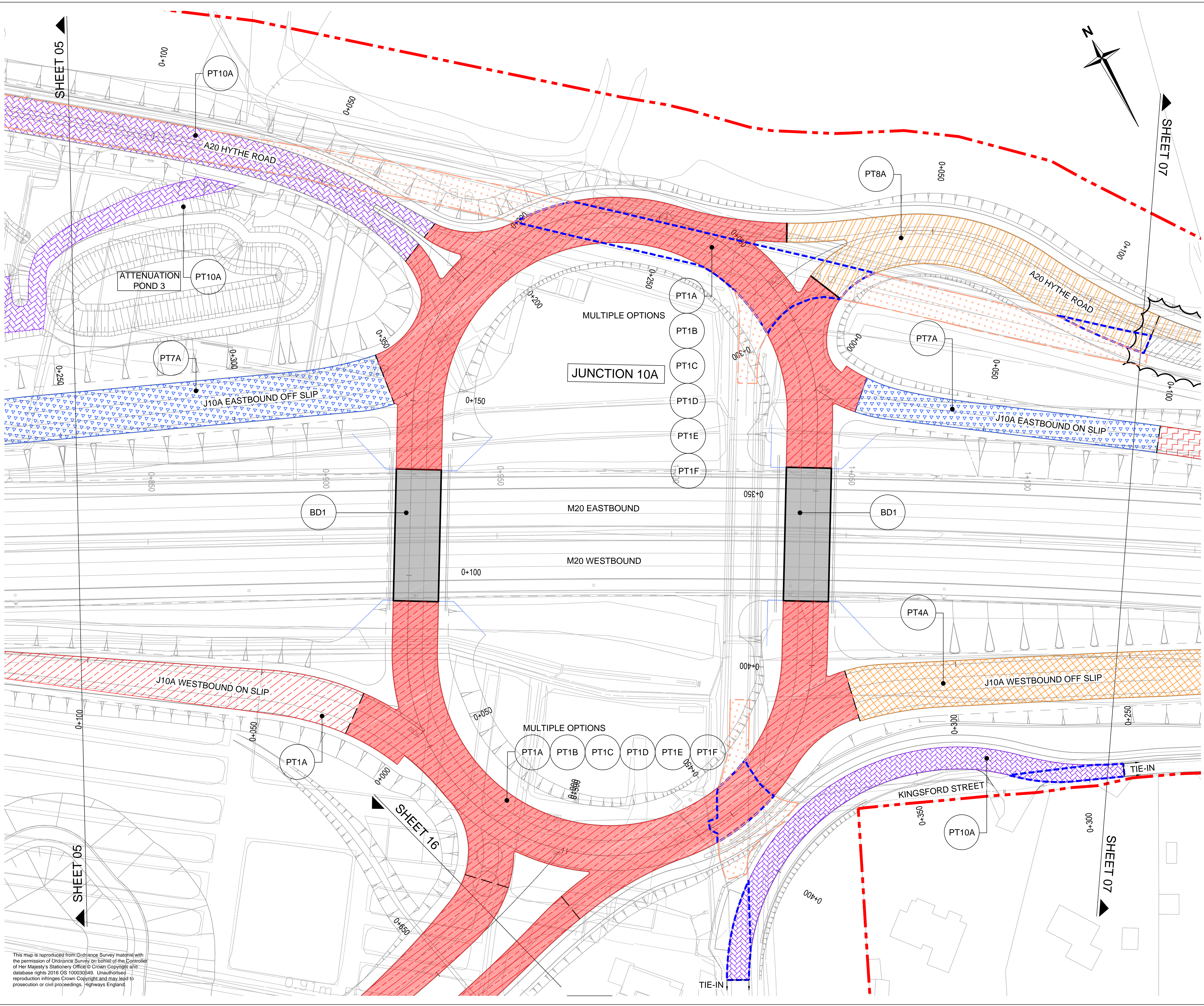
SHEET 02

SHEET 02

SHEET 04

SHEET 04

SHEET 14



NOTES

- TO BE READ IN CONJUNCTION WITH THE APPENDICES IN THE 700 SERIES.
- FOR TIE IN DETAILS REFER TO APPENDIX 7/1.

KEY

- DCO BOUNDARY
- PAVEMENT TYPE - PT1A/B/C/D/E/F
- PAVEMENT TYPE - PT2A/B/C/D/E/F
- PAVEMENT TYPE - PT1A
- PAVEMENT TYPE - PT2A
- PAVEMENT TYPE - PT3A
- PAVEMENT TYPE - PT4A
- PAVEMENT TYPE - PT5A
- PAVEMENT TYPE - PT6A
- PAVEMENT TYPE - PT7A
- PAVEMENT TYPE - PT8A
- PAVEMENT TYPE - PT10A
- PAVEMENT TYPE - PT11A
- PAVEMENT TYPE - EPT3
- PAVEMENT TYPE - EPT4
- PAVEMENT TYPE - EPT5
- PAVEMENT TYPE - EPT6
- PAVEMENT TYPE - EPT7
- PAVEMENT TYPE - EPT8
- PAVEMENT TYPE - EPT9
- BRIDGE DECK - BD1
- TIE-IN OVERLAY DETAILS TO BE FINALISED ON RECEIPT OF EXISTING PAVEMENT SURVEY DATA
- AREA OF EXISTING PAVEMENT TO BE BROKEN UP
- AREA OF PERFORMED PAVEMENT

0 20 40 60 80 100 m
SCALE 1:500

| | | | | | | |
|------|----------|-----------------------------------|-------|---------|----------|----------|
| P00 | 03/08/17 | FIRST ISSUE | PA | PT | AI | IC |
| P01 | 15/11/17 | SUITABLE TO CONSTRUCTION APPROVAL | PA | JH | PH | PH |
| Rev. | Date | Description of revision | Drawn | Checked | Review'd | Approved |

DRAWING STATUS

Fit for Construction Approval

CLIENT

CONTRACTOR

JOINT VENTURE

CONTRACTOR CONSULTANT

Tower Bridge Court, 224/226 Tower Bridge Road, London, SE1 2UP
Tel: +44(0)20 7403 3330 Fax: +44(0)20 7939 1418
www.jacobs.com

SCHEME TITLE

M20 JUNCTION 10A

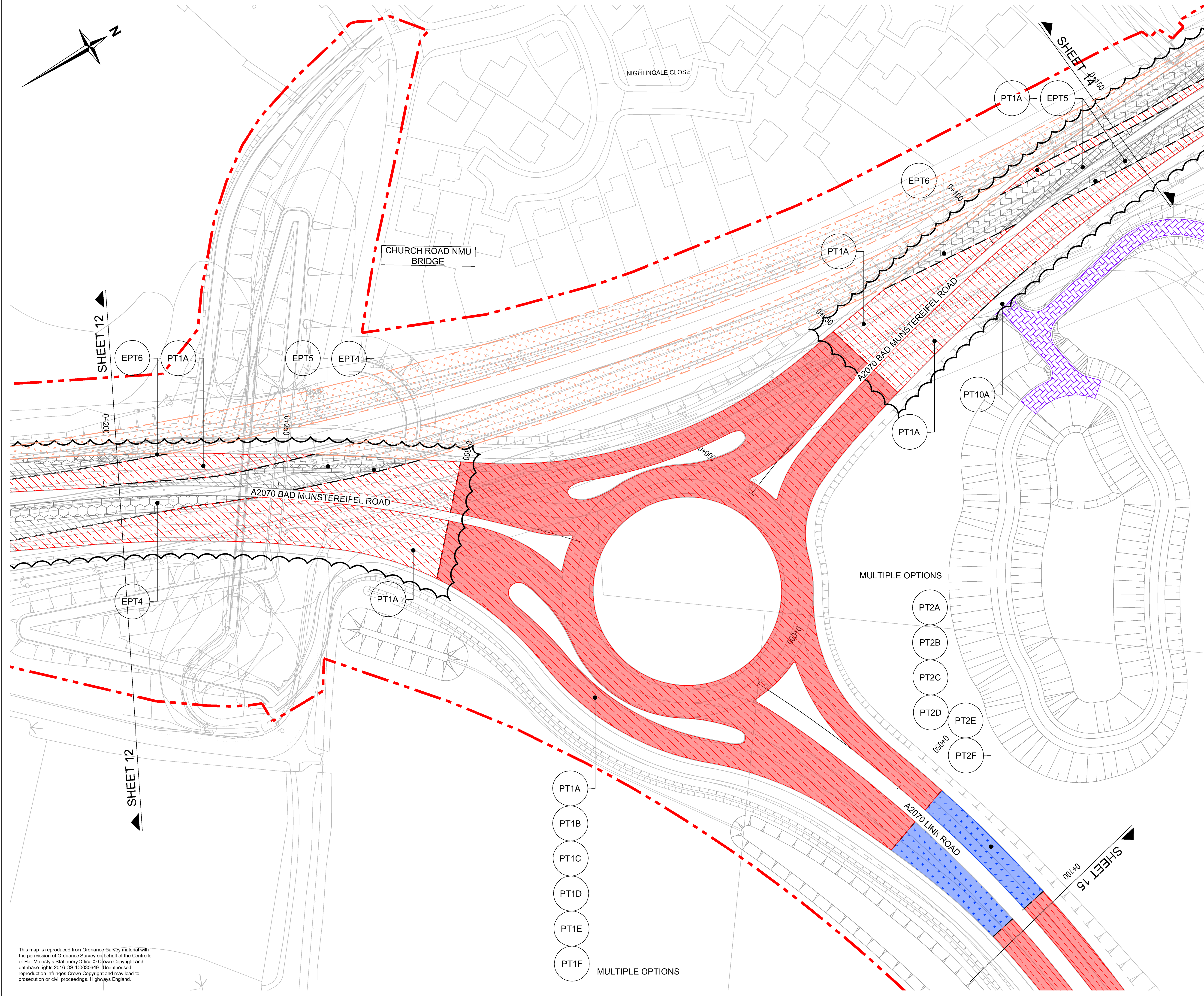
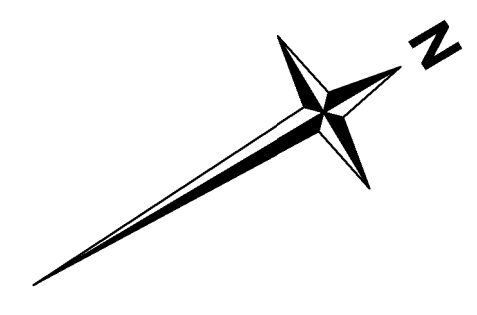
DRAWING TITLE

**ROAD PAVEMENTS
GENERAL ARRANGEMENT
SHEET 6 OF 18**

| | |
|--------------------------------|-------------------------|
| DRAWING UNITS U.N.O. | SCALE AT A1 (841x594mm) |
| DIMENSIONS IN MILLIMETRES | 1:500 |
| LEVELS IN METRES | |
| DRAWING No. | REV. |
| HE514442-JAC-HPV-00-DR-CH-1006 | P01 |

This drawing is not to be used in whole or part other than for the intended purpose and project as defined on this drawing. Refer to the contract for full terms and conditions.

This map is reproduced from Ordnance Survey material with the permission of Ordnance Survey on behalf of the Controller of Her Majesty's Stationery Office. Crown Copyright and database rights 2016 OS 100030549. Unauthorised reproduction infringes Crown Copyright and may lead to prosecution or civil proceedings. Highways England.



NOTES

- TO BE READ IN CONJUNCTION WITH THE APPENDICES IN THE 700 SERIES.
- FOR TIE IN DETAILS REFER TO APPENDIX 7/1.

KEY

- DCO BOUNDARY
- PAVEMENT TYPE - PT1A/B/C/D/E/F
- PAVEMENT TYPE - PT2A/B/C/D/E/F
- PAVEMENT TYPE - PT1A
- PAVEMENT TYPE - PT2A
- PAVEMENT TYPE - PT3A
- PAVEMENT TYPE - PT4A
- PAVEMENT TYPE - PT5A
- PAVEMENT TYPE - PT6A
- PAVEMENT TYPE - PT7A
- PAVEMENT TYPE - PT8A
- PAVEMENT TYPE - PT10A
- PAVEMENT TYPE - PT11A
- PAVEMENT TYPE - EPT3
- PAVEMENT TYPE - EPT4
- PAVEMENT TYPE - EPT5
- PAVEMENT TYPE - EPT6
- PAVEMENT TYPE - EPT7
- PAVEMENT TYPE - EPT8
- PAVEMENT TYPE - EPT9
- BRIDGE DECK - BD1
- TIE-IN OVERLAY DETAILS TO BE FINALISED ON RECEIPT OF EXISTING PAVEMENT SURVEY DATA
- AREA OF EXISTING PAVEMENT TO BE BROKEN UP
- AREA OF PERFORATED PAVEMENT

0 20 40 60 80 100 m
SCALE 1 : 500

| Rev | Date | Description of revision | Drawn | Checked | Reviewed | Approved |
|-----|----------|------------------------------------|-------|---------|----------|----------|
| P00 | 03/08/17 | FIRST ISSUE | PA | PT | AI | IC |
| P01 | 15/11/17 | SUITABLE FOR CONSTRUCTION APPROVAL | PA | JH | PH | PH |

DRAWING STATUS

Fit for Construction Approval

CLIENT

CONTRACTOR

CONTRACTOR CONSULTANT

Tower Bridge Court, 224/226 Tower Bridge Road, London, SE1 2UP
Tel: +44(0)20 7403 3330 Fax: +44(0)20 7939 1418
www.jacobs.com

SCHEME TITLE

M20 JUNCTION 10A

DRAWING TITLE

**ROAD PAVEMENTS
GENERAL ARRANGEMENT
SHEET 13 OF 18**

DRAWING UNITS U.N.O.
DIMENSIONS IN MILLIMETRES
LEVELS IN METRES

SCALE AT A1 (841x594mm)
1:500

DRAWING No. **HE514442-JAC-HPV-00-DR-CH-1013** REV. **P01**

This drawing is not to be used in whole or part other than for the intended purpose and project as defined on this drawing. Refer to the contract for full terms and conditions.



This map is reproduced from Ordnance Survey material with the permission of Ordnance Survey on behalf of the Controller of Her Majesty's Stationery Office © Crown Copyright and database rights 2016 OS 100030649. Unauthorised reproduction infringes Crown Copyright and may lead to prosecution or civil proceedings. Highways England.

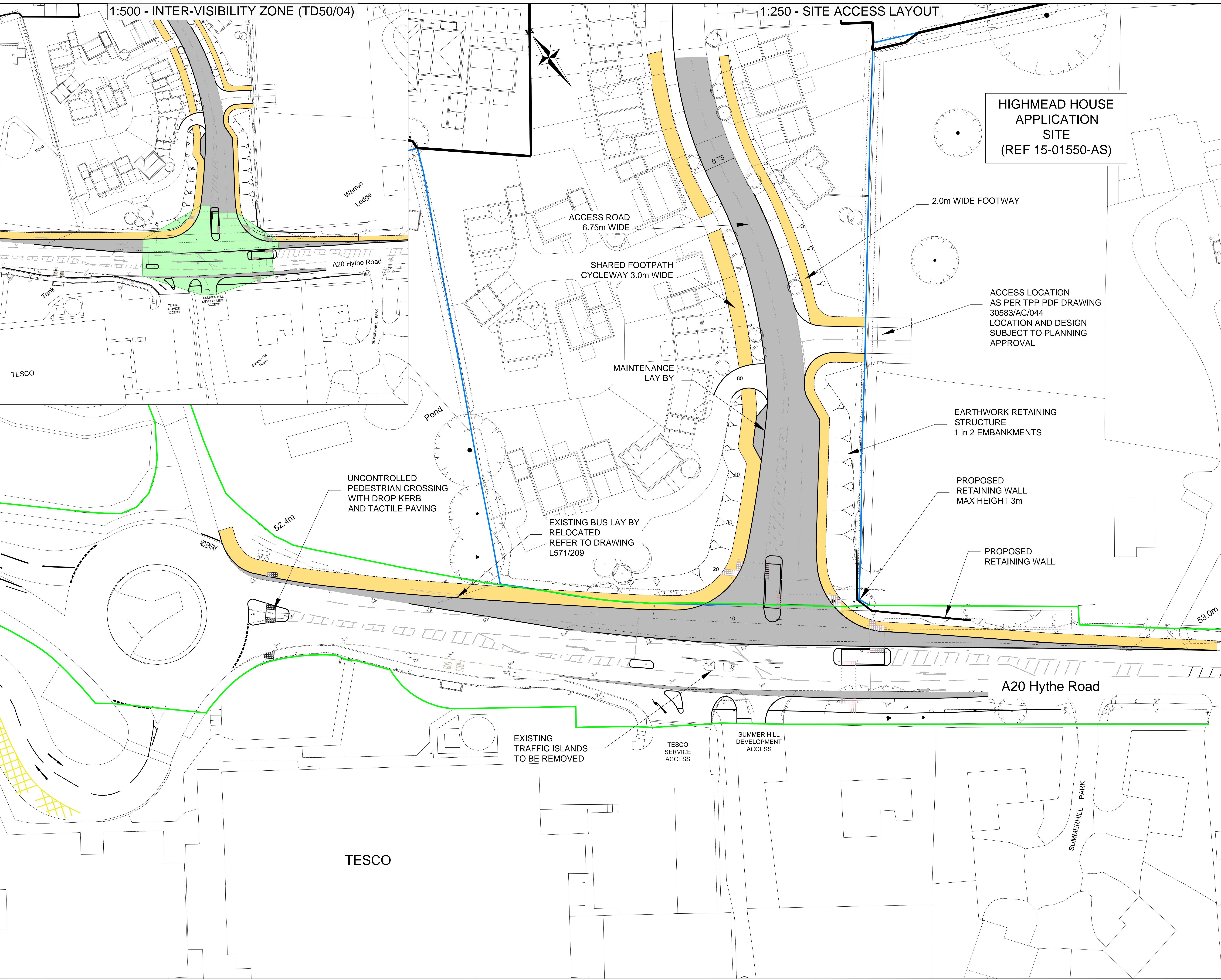
1:500 - INTER-VISIBILITY ZONE (TD50/04)

1:250 - SITE ACCESS LAYOUT

HIGHMEAD HOUSE
APPLICATION
SITE
(REF 15-01550-AS)

- NOTES:
1. ALL DIMENSIONS ARE IN METERS UNLESS OTHERWISE STATED.
 2. DO NOT SCALE FROM THIS DRAWING. WORK FROM FIGURED DIMENSIONS ONLY.
 3. ALL LEVELS RELATE TO ORDNANCE SURVEY DATUM.
 4. THIS DRAWING IS TO BE READ IN CONJUNCTION ALL RELEVANT DOCUMENTS.
 5. CARRIAGEWAY MARKINGS AND ROAD SIGNS SHALL BE PROVIDED IN ACCORDANCE WITH THE CURRENT REVISION OF "THE TRAFFIC SIGNS AND GENERAL DIRECTIONS".
 6. ALL MATERIALS AND WORKMANSHIP SHALL COMPLY FULLY WITH THE MANUAL OF CONTRACT DOCUMENTS FOR HIGHWAY WORKS, VOLUME 1 SPECIFICATION FOR HIGHWAY WORKS AND SPECIFIC REQUIREMENTS FOR ROAD CONSTRUCTION AND STANDARD DETAILS, ALL AS REQUIRED BY THE HIGHWAY AUTHORITY.

KEY
 HIGHWAY BOUNDARY
 LAND OWNERSHIP



| | | | | | | |
|------------------|--------------------------------|--------------|-----------|----|----|----------|
| REV | DESCRIPTION | DE | DR | CH | PA | DATE |
| E | BDB MASTERPLAN 2747-60 P1 | DR | DR | | | 14.11.16 |
| D | HIGHMEAD ACCESS REVISED | DR | DR | | | 8.11.16 |
| C | CYCLEWAY/FOOTWAY WIDTH AMENDED | DR | DR | MK | MK | 7.9.16 |
| B | DRG AMENDED TO MASTER PLAN | DR | DR | MK | MK | 23.12.15 |
| A | DIMENSIONS INCLUDED | DR | DR | MK | MK | 23.12.15 |
| DESIGNED BY | DRAWN BY | CHECKED BY | PASSED BY | | | |
| DR | DR | MK | MK | | | |
| SCALES @ A0 SIZE | DATE | ISSUE STATUS | | | | |
| 1:250 | 04/12/2015 | PRELIMINARY | | | | |

PROJECT TITLE
**WILLESBOROUGH LEES
 ASHFORD**

DRAWING TITLE
**PROPOSED TRAFFIC
 SIGNAL CONTROLLED SITE
 ACCESS JUNCTION**

CLIENT
BELLWAY HOMES Ltd.

CANNON
 CONSULTING ENGINEERS
 Highways, Transport & Infrastructure Planning

Cannon Consulting Engineers
 Cambridge House, Kentford, Newmarket, Suffolk, CB8 7PN
 Tel: +44 (0)1638 555 107
 info@cannonce.co.uk www.cannonce.co.uk

DRAWING NUMBER
L571 / 204

REV.
E



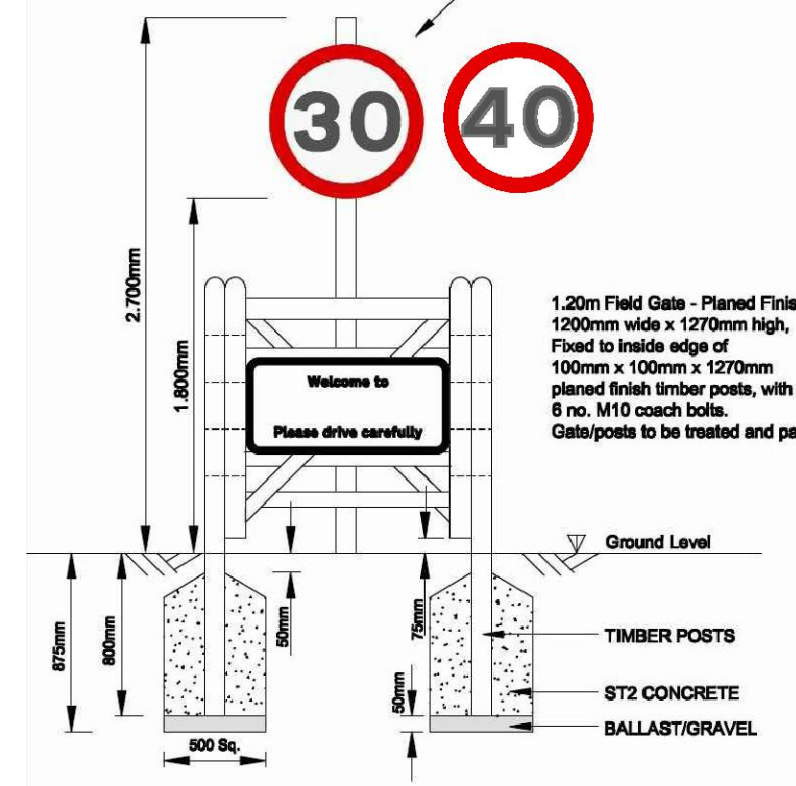
LEGEND

- VISIBILITY SPLAY OF 2.4 X 43 METRES
 - DIRECT FRONTAGE ACCESS FROM A20 TO NEW HOMES TO BE PROVIDED WHERE POSSIBLE.
- NOTES:
1. REFLECTIVE POSTS WILL BE INSTALLED AT BUILD OUTS.
 2. THE SHARED CYCLE ROUTE ON THE NORTH SIDE OF ASHFORD ROAD WILL HAVE APPROPRIATE SIGNAGE.
 3. GUARD RAILING WILL BE PROVIDED ON THE NORTH SIDE OF ASHFORD ROAD, BY THE PRIMARY SCHOOL, FOR THE LENGTH OF THE ZIG-ZAG MARKINGS.
 4. BUS STOPS TO BE FULL LENGTH (31 METRES) BUS STOP CLEARWAYS ALONG SITE FRONTAGE. NEW BUS STOPS ALSO TO HAVE HIGH KERBS, TO ENSURE EASY ACCESS, BUS SHELTERS AND TIMETABLE INFORMATION.

1 No. SIGN TYPE 670 (30MPH) SIZE 750MM
 1 No. SIGN TYPE 670 (40MPH) SIZE 750MM
 MOUNTED BACK TO BACK AT 1.8M (IN VERGE) OR 2.1 (IN FOOTWAY).
 SIGNS MOUNTED ON 1 NO. 76MM STRAIGHT STEEL POST BEHIND GATE.



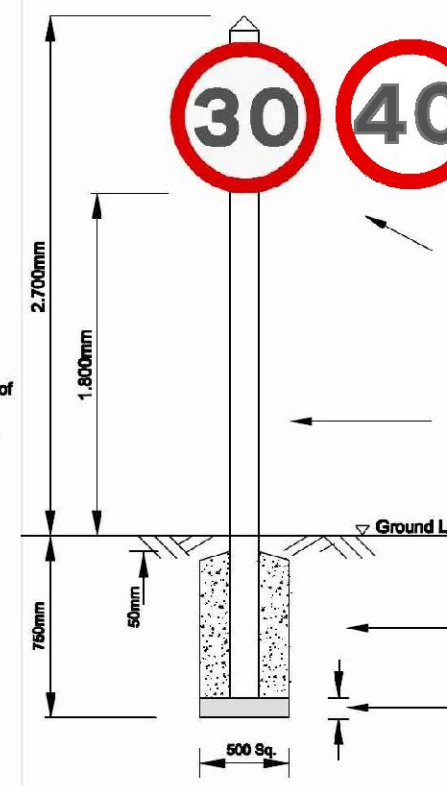
120m Field Gate - Planned Finish
 1200mm wide x 1270mm high,
 Fixed to inside edge of
 100mm x 100mm x 1270mm
 planned finish timber posts, with a minimum of
 6 no. M10 coach bolts.
 Gateposts to be treated and painted white.



1 No. SIGN TYPE 670 (30MPH) SIZE 750MM
 1 No. SIGN TYPE 670 (40MPH) SIZE 750MM
 MOUNTED BACK TO BACK AT 1.8M (IN VERGE) OR 2.1 (IN FOOTWAY).



150 x 150 x 2.7MM
 SAWN SOFT WOOD TIMBER POST,
 TOP CHAMFERED AT 45 DEGREES.
 TO BE PAINTED WHITE.

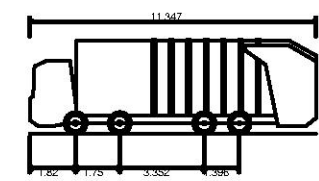
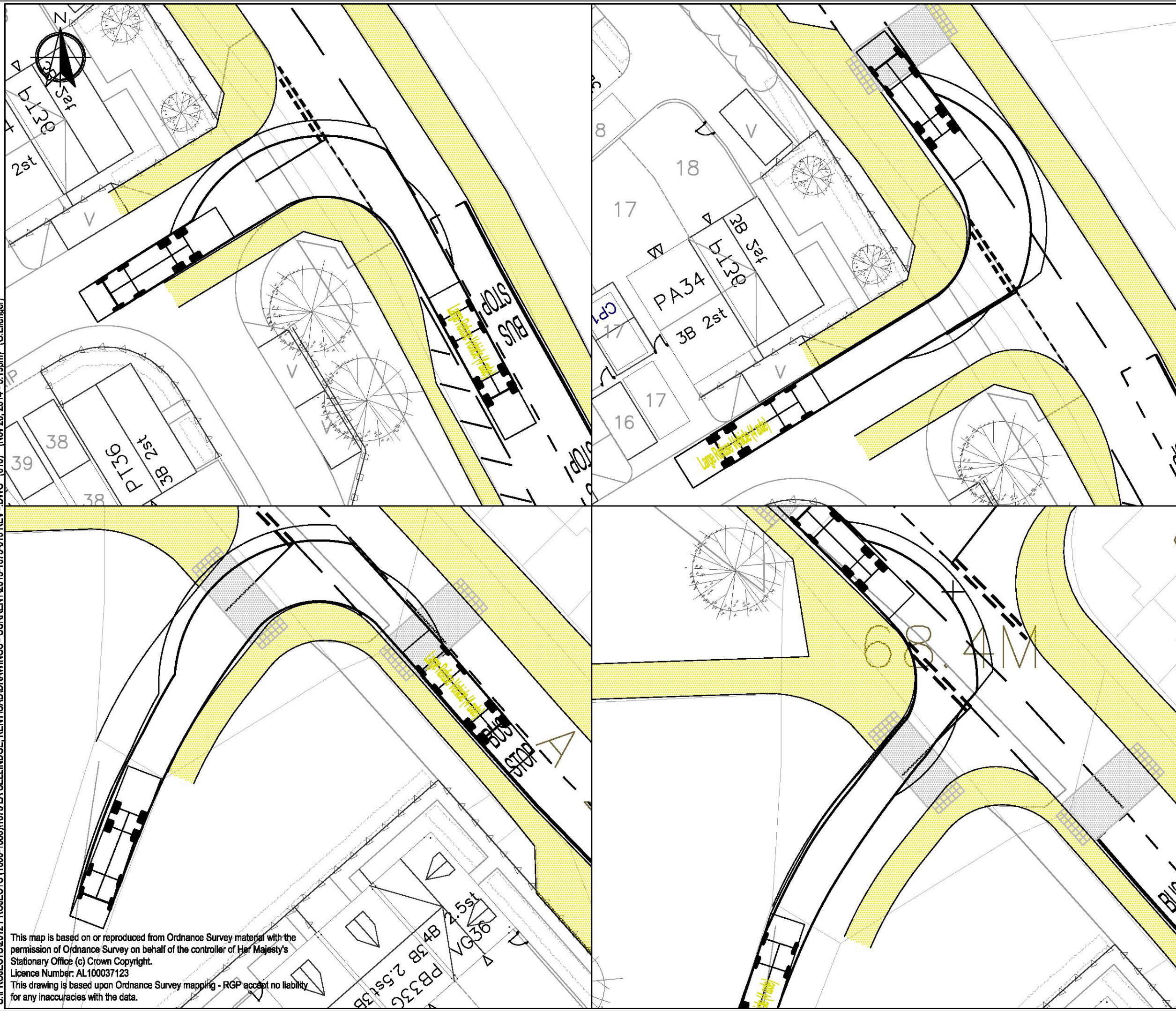


GATEWAY TREATMENT AS DETAILED IN KENT HIGHWAY SERVICES DRAWING 300 VILLAGE GATEWAY DETAIL



| | | | |
|-----------------------|---------------|------------|-------------|
| Client | | | |
| Taylor Wimpey | | | |
| Project | | | |
| Sellindge Development | | | |
| Drawing Title | | | |
| A20 Improvements | | | |
| Scale | Drawn By | Checked By | Approved By |
| 1:1250 | PJB | GSE | CMB |
| Drawing No. | Date | Rev. | |
| 2013/1673/009 | November 2014 | | B |

S:\PROJECTS\2012 PROJECTS (1600-1686)\1673 LA SELLIDGE_KENTICAD\DRAWINGS - CURRENT\2013-1673-010 REV - DWG (010) (Nov 20, 2014 - 5:19pm) (G.Ellinger)



Large Refuse Vehicle (4 axle)
 Overall Length 11.347m
 Overall Width 2.500m
 Overall Body Height 3.751m
 Min Body Ground Clearance 0.304m
 Track Width 2.500m
 Lock to Lock Time 6.00s
 Wall to Wall Turning Radius 11.330m



Transport Planners and Infrastructure Design Consultants
 The Old Stables, Fry's Yard, Bridge Street, Godalming, Surrey, GU7 1HP
 Tel: 01483 861681 Fax: 01483 861682 www.russelgilles.com

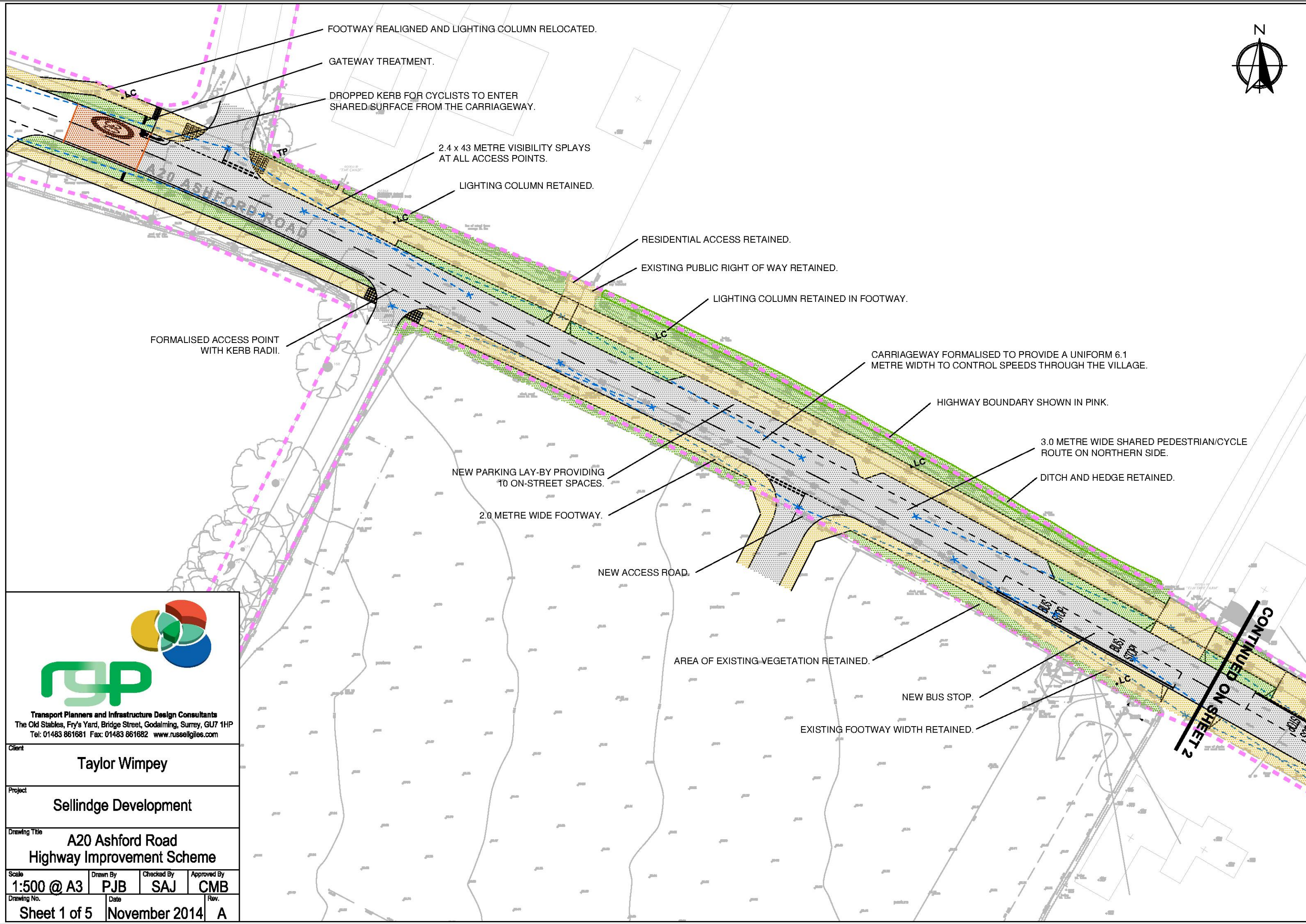
Client
Taylor Wimpey

Project
Sellidge Development

Drawing Title
Site Access Tracking

| | | | |
|---------------|---------------|------------|-------------|
| Scale | Drawn By | Checked By | Approved By |
| 1:250 @ A3 | GSE | SAJ | CMB |
| Drawing No. | Date | Rev. | |
| 2013/1673/010 | November 2014 | B | |

This map is based on or reproduced from Ordnance Survey material with the permission of Ordnance Survey on behalf of the controller of Her Majesty's Stationary Office (c) Crown Copyright.
 Licence Number: AL100037123
 This drawing is based upon Ordnance Survey mapping - RGP accept no liability for any inaccuracies with the data.



FOOTWAY REALIGNED AND LIGHTING COLUMN RELOCATED.

GATEWAY TREATMENT.

DROPPED KERB FOR CYCLISTS TO ENTER SHARED SURFACE FROM THE CARRIAGEWAY.

2.4 x 43 METRE VISIBILITY SPLAYS AT ALL ACCESS POINTS.

LIGHTING COLUMN RETAINED.

RESIDENTIAL ACCESS RETAINED.

EXISTING PUBLIC RIGHT OF WAY RETAINED.

LIGHTING COLUMN RETAINED IN FOOTWAY.

FORMALISED ACCESS POINT WITH KERB RADII.

CARRIAGEWAY FORMALISED TO PROVIDE A UNIFORM 6.1 METRE WIDTH TO CONTROL SPEEDS THROUGH THE VILLAGE.

HIGHWAY BOUNDARY SHOWN IN PINK.

3.0 METRE WIDE SHARED PEDESTRIAN/CYCLE ROUTE ON NORTHERN SIDE.

DITCH AND HEDGE RETAINED.

NEW PARKING LAY-BY PROVIDING 10 ON-STREET SPACES.

2.0 METRE WIDE FOOTWAY.

NEW ACCESS ROAD.

AREA OF EXISTING VEGETATION RETAINED.

NEW BUS STOP.

EXISTING FOOTWAY WIDTH RETAINED.

CONTINUED ON SHEET 2



Transport Planners and Infrastructure Design Consultants
The Old Stables, Fry's Yard, Bridge Street, Godalming, Surrey, GU7 1HP
Tel: 01483 861681 Fax: 01483 861682 www.russellgiles.com

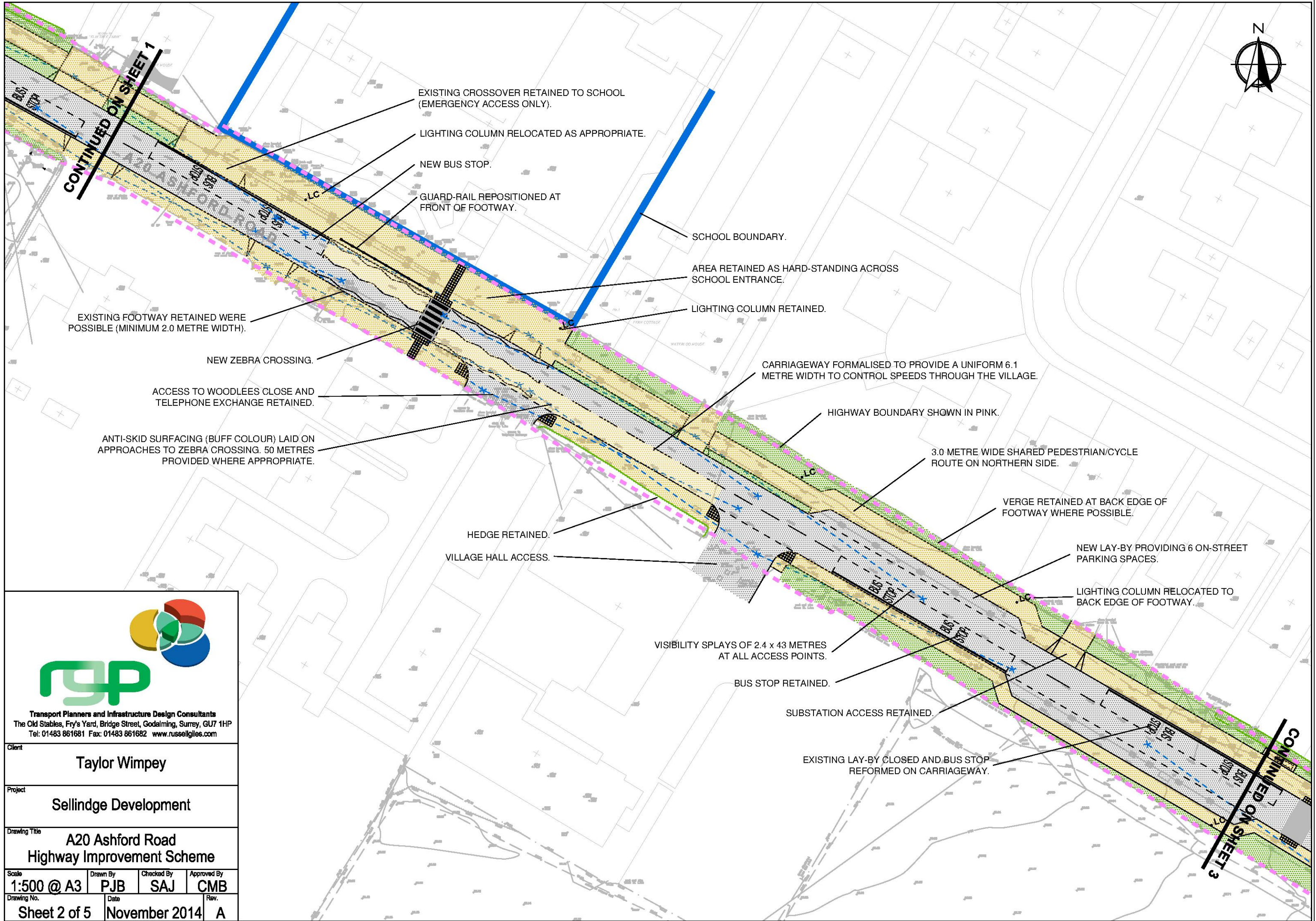
Client
Taylor Wimpey

Project
Sellindge Development

Drawing Title
**A20 Ashford Road
Highway Improvement Scheme**

| | | | |
|----------------------------|------------------------|--------------------------|---------------------------|
| Scale 1:500 @ A3 | Drawn By PJB | Checked By SAJ | Approved By CMB |
|----------------------------|------------------------|--------------------------|---------------------------|

| | | |
|------------------------------------|------------------------------|------------------|
| Drawing No. Sheet 1 of 5 | Date November 2014 | Rev. A |
|------------------------------------|------------------------------|------------------|



CONTINUED ON SHEET 1

CONTINUED ON SHEET 3

EXISTING CROSSOVER RETAINED TO SCHOOL (EMERGENCY ACCESS ONLY).

LIGHTING COLUMN RELOCATED AS APPROPRIATE.

NEW BUS STOP.

GUARD-RAIL REPOSITIONED AT FRONT OF FOOTWAY.

SCHOOL BOUNDARY.

AREA RETAINED AS HARD-STANDING ACROSS SCHOOL ENTRANCE.

LIGHTING COLUMN RETAINED.

EXISTING FOOTWAY RETAINED WHERE POSSIBLE (MINIMUM 2.0 METRE WIDTH).

NEW ZEBRA CROSSING.

ACCESS TO WOODLEES CLOSE AND TELEPHONE EXCHANGE RETAINED.

ANTI-SKID SURFACING (BUFF COLOUR) LAID ON APPROACHES TO ZEBRA CROSSING. 50 METRES PROVIDED WHERE APPROPRIATE.

CARRIAGEWAY FORMALISED TO PROVIDE A UNIFORM 6.1 METRE WIDTH TO CONTROL SPEEDS THROUGH THE VILLAGE.

HIGHWAY BOUNDARY SHOWN IN PINK.

3.0 METRE WIDE SHARED PEDESTRIAN/CYCLE ROUTE ON NORTHERN SIDE.

VERGE RETAINED AT BACK EDGE OF FOOTWAY WHERE POSSIBLE.

HEDGE RETAINED.

VILLAGE HALL ACCESS.

NEW LAY-BY PROVIDING 6 ON-STREET PARKING SPACES.

LIGHTING COLUMN RELOCATED TO BACK EDGE OF FOOTWAY.

VISIBILITY SPLAYS OF 2.4 x 43 METRES AT ALL ACCESS POINTS.

BUS STOP RETAINED.

SUBSTATION ACCESS RETAINED.

EXISTING LAY-BY CLOSED AND BUS STOP REFORMED ON CARRIAGEWAY.



Transport Planners and Infrastructure Design Consultants
The Old Stables, Fry's Yard, Bridge Street, Godalming, Surrey, GU7 1HP
Tel: 01483 861681 Fax: 01483 861682 www.russellgiles.com

Client
Taylor Wimpey

Project
Sellindge Development

Drawing Title
**A20 Ashford Road
Highway Improvement Scheme**

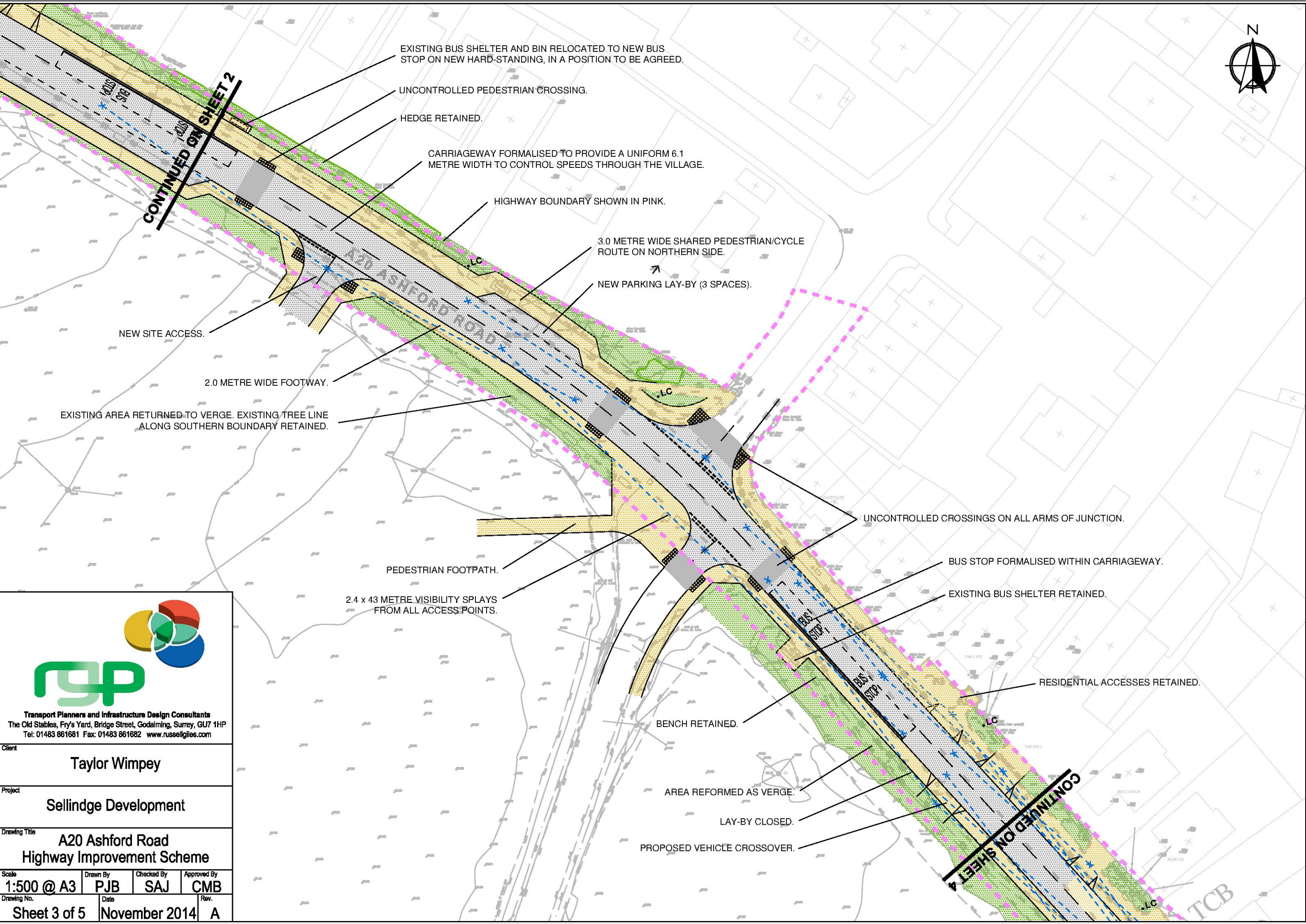
Scale: 1:500 @ A3
Drawn By: PJB
Checked By: SAJ
Approved By: CMB

Drawing No.: Sheet 2 of 5
Date: November 2014
Rev.: A



CONTINUED ON SHEET 2

CONTINUED ON SHEET 4



EXISTING BUS SHELTER AND BIN RELOCATED TO NEW BUS STOP ON NEW HARD-STANDING, IN A POSITION TO BE AGREED.

UNCONTROLLED PEDESTRIAN CROSSING.

HEDGE RETAINED.

CARRIAGEWAY FORMALISED TO PROVIDE A UNIFORM 6.1 METRE WIDTH TO CONTROL SPEEDS THROUGH THE VILLAGE.

HIGHWAY BOUNDARY SHOWN IN PINK.

3.0 METRE WIDE SHARED PEDESTRIAN/CYCLE ROUTE ON NORTHERN SIDE.

NEW PARKING LAY-BY (3 SPACES).

NEW SITE ACCESS.

2.0 METRE WIDE FOOTWAY.

EXISTING AREA RETURNED TO VERGE. EXISTING TREE LINE ALONG SOUTHERN BOUNDARY RETAINED.

UNCONTROLLED CROSSINGS ON ALL ARMS OF JUNCTION.

PEDESTRIAN FOOTPATH.

2.4 x 43 METRE VISIBILITY SPLAYS FROM ALL ACCESS POINTS.

BUS STOP FORMALISED WITHIN CARRIAGEWAY.

EXISTING BUS SHELTER RETAINED.

RESIDENTIAL ACCESSES RETAINED.

BENCH RETAINED.

AREA REFORMED AS VERGE.

LAY-BY CLOSED.

PROPOSED VEHICLE CROSSOVER.



Transport Planners and Infrastructure Design Consultants
The Old Stables, Fry's Yard, Bridge Street, Godalming, Surrey, GU7 1HP
Tel: 01483 861681 Fax: 01483 861682 www.russellgiles.com

Client
Taylor Wimpey

Project
Sellindge Development

Drawing Title
**A20 Ashford Road
Highway Improvement Scheme**

Scale: 1:500 @ A3
Drawn By: PJB
Checked By: SAJ
Approved By: CMB

Drawing No.: Sheet 3 of 5
Date: November 2014
Rev.: A

TCB



CONTINUED ON SHEET 3

ACCESS TO PROPERTIES RETAINED.

LIGHTING COLUMN RETAINED.

PARKING AREA IN FRONT OF LOCAL CENTRE RETAINED.

CARRIAGEWAY FORMALISED TO PROVIDE A UNIFORM 6.1 METRE WIDTH TO CONTROL SPEEDS THROUGH THE VILLAGE.

PROPOSED VEHICLE CROSSOVER.

HIGHWAY BOUNDARY SHOWN IN PINK.

END OF SHARED PEDESTRIAN/CYCLE ROUTE. CYCLISTS TO MERGE BACK ONTO CARRIAGEWAY VIA ZEBRA CROSSING.

2.0 METRE FOOTWAY WIDTH.

LIGHTING COLUMN RETAINED.

ANTI-SKID SURFACING (BUFF COLOUR) LAID ON APPROACHES TO ZEBRA CROSSING. 50 METRES PROVIDED WHERE APPROPRIATE.

3.0 METRE WIDE SHARED PEDESTRIAN/CYCLE ROUTE ON NORTHERN SIDE.

SITE ACCESS.

NEW ZEBRA CROSSING.

HEDGE LINE RETAINED.

LIGHTING COLUMN RETAINED.

2.4 x 43 METRES VISIBILITY RETAINED AT ALL ACCESS POINTS.

EXISTING BACK EDGE OF FOOTWAY RETAINED.

PROPOSED PARKING LAY-BY (10 SPACES).

LIGHTING COLUMN RETAINED.

LIGHTING COLUMN RETAINED.

CONTINUED ON SHEET 5



Transport Planners and Infrastructure Design Consultants
The Old Stables, Fry's Yard, Bridge Street, Godalming, Surrey, GU7 1HP
Tel: 01483 861681 Fax: 01483 861682 www.russellgilles.com

Client
Taylor Wimpey

Project
Sellidge Development

Drawing Title
**A20 Ashford Road
Highway Improvement Scheme**

Scale **1:500 @ A3** Drawn By **PJB** Checked By **SAJ** Approved By **CMB**

Drawing No. **Sheet 4 of 5** Date **November 2014** Rev. **A**



CONTINUED ON SHEET 4

EXISTING FLAG TYPE BUS STOPS RETAINED.

HATCHING CONTINUED TO EXISTING PRIORITY ARRANGEMENT TO RETAIN UNIFORM 6.1 METRE CARRIAGEWAY WIDTH.

SPEED REDUCING FEATURE ON NORTHBOUND APPROACH (ROUNDEL MARKINGS AND SIGNS) SIGNS TO BE MOUNTED AT A HEIGHT ABOVE 2100MM.



Transport Planners and Infrastructure Design Consultants
The Old Stables, Fry's Yard, Bridge Street, Godalming, Surrey, GU7 1HP
Tel: 01483 861681 Fax: 01483 861682 www.russellgilles.com

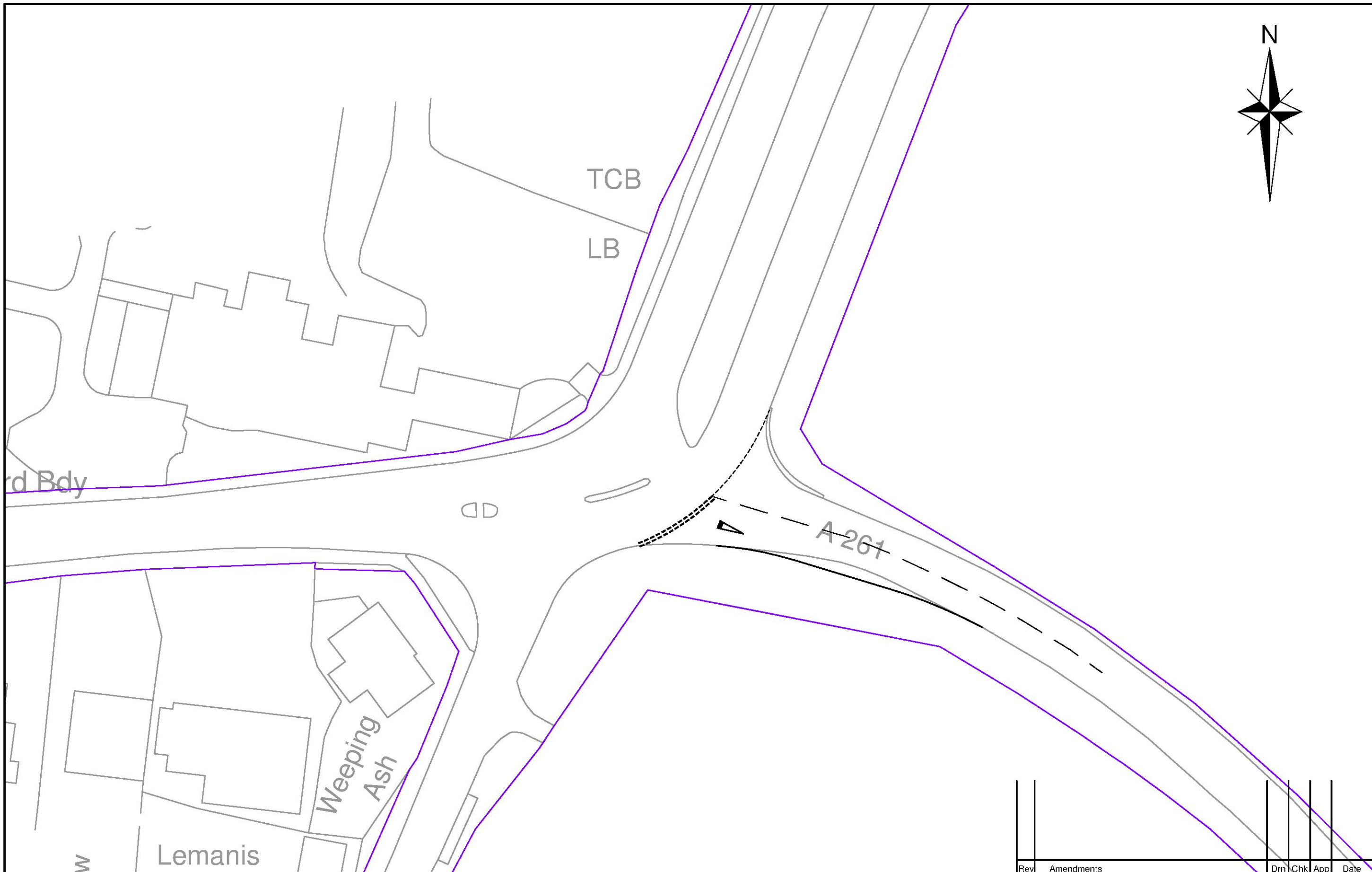
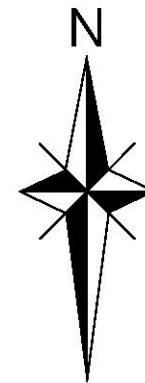
Client
Taylor Wimpey

Project
Sellindge Development

Drawing Title
**A20 Ashford Road
Highway Improvement Scheme**

| | | | |
|----------------------------|------------------------|--------------------------|---------------------------|
| Scale 1:500 @ A3 | Drawn By PJB | Checked By SAJ | Approved By CMB |
|----------------------------|------------------------|--------------------------|---------------------------|

| | | |
|------------------------------------|------------------------------|------------------|
| Drawing No. Sheet 5 of 5 | Date November 2014 | Rev. A |
|------------------------------------|------------------------------|------------------|



| Rev | Amendments | Drn | Chk | App | Date |
|-----|------------|-----|-----|-----|------|
| | | | | | |

GA
Consulting Engineers Ltd

Issued by Aldershot Enterprise Centre
Mandora House
Louise Margaret Road
Aldershot, Hampshire
GU11 2PW
01252 939000

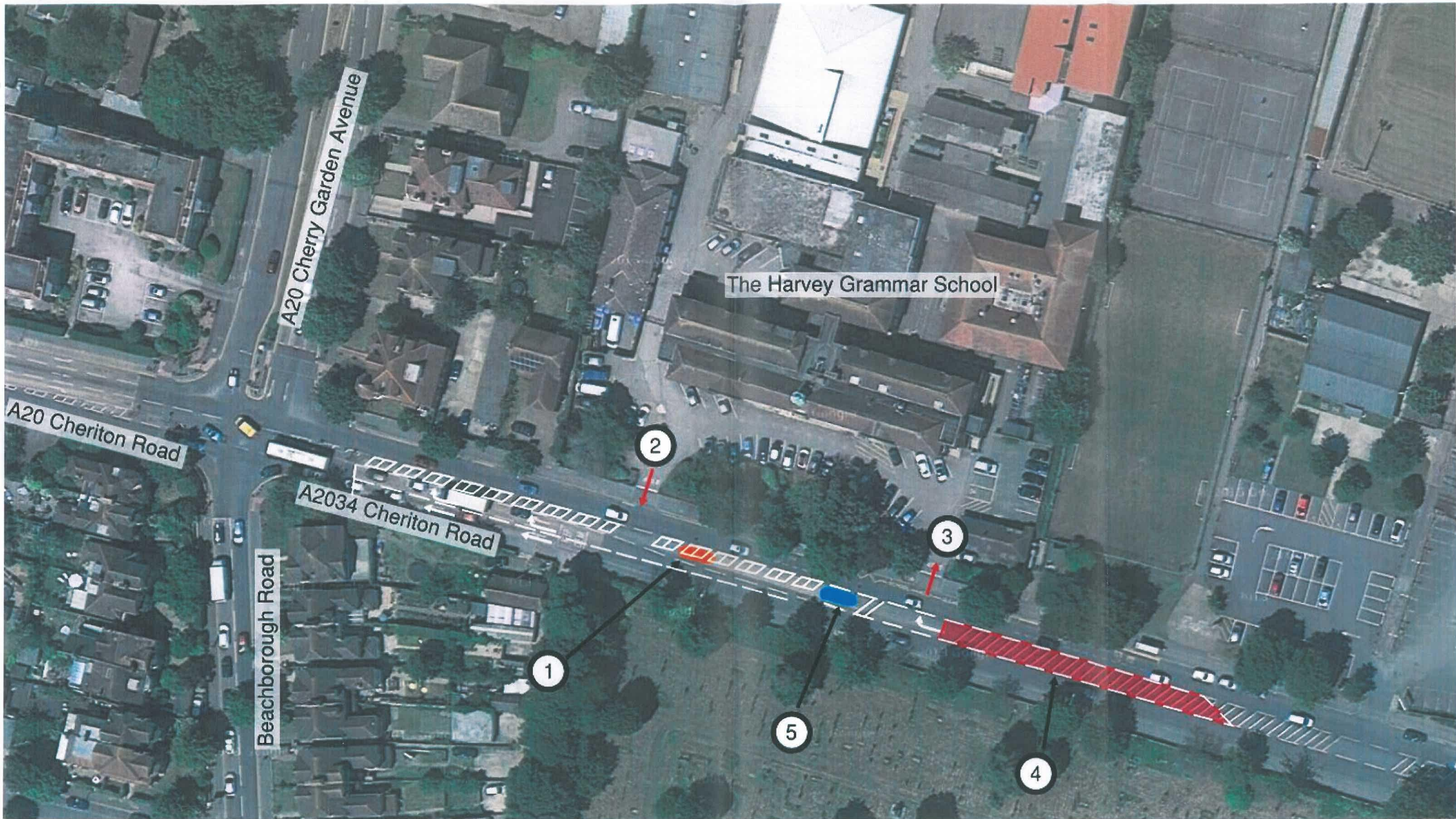
Park House, Park Farm
East Malling Trust Estate
Bradbourne Lane
Aylesford, Kent ME20 6SN
01732 448120

Job Title
Main Road, Sellindge

Drawing Title
Proposed Hythe Road Increased Flare

Client
Quinn Estates

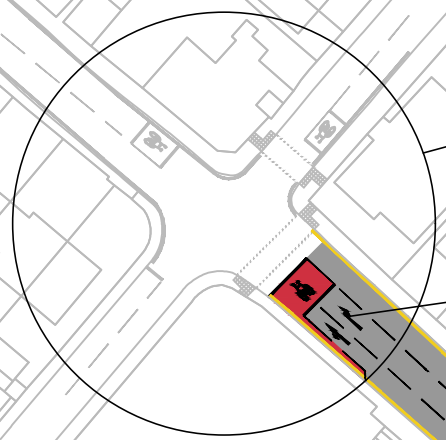
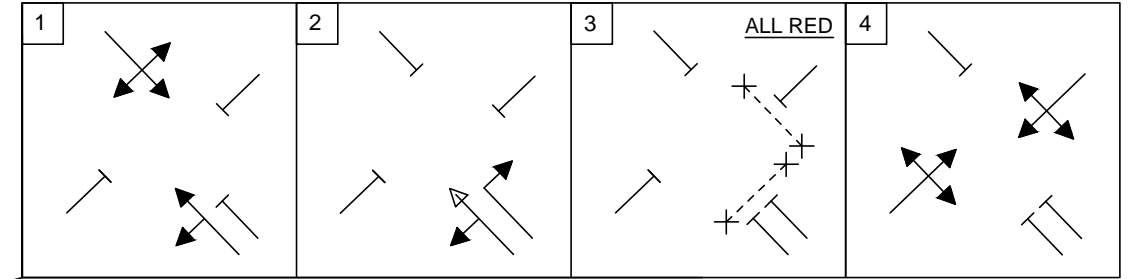
| | | |
|------------------|--------------------------|----------------|
| Scale 1:500 | Date Mar 17 | Designed DH |
| Drawn DH | Checked FM | Approved JW |
| Job No 16-010 | Drawing No 16-010-024 | Rev |



- ① Existing pedestrian crossing removed. Right-turning lane into Cherry Garden Avenue extended to improve straight-on movements
- ② Exit only. One-way access arrangement for school
- ③ Entrance only. One-way access arrangement for school
- ④ Remove existing hatching and replace with extended right turning lane into school entrance
- ⑤ Existing pedestrian crossing retained



P:\RGP\2013 PROJECTS (1687-1799)\1749 MOUNTFIELD PARK, CANTERBURY\CAD\DRAWINGS - CURRENT\2013-1749-037 REV A.DWG (037) (Feb 04, 2016 - 1:33pm) (r.atwood)



NEW RIGHT TURN LANE AND CHANGES TO SIGNAL TIMING TO IMPROVE CAPACITY AND REDUCE VEHICLE DELAY.

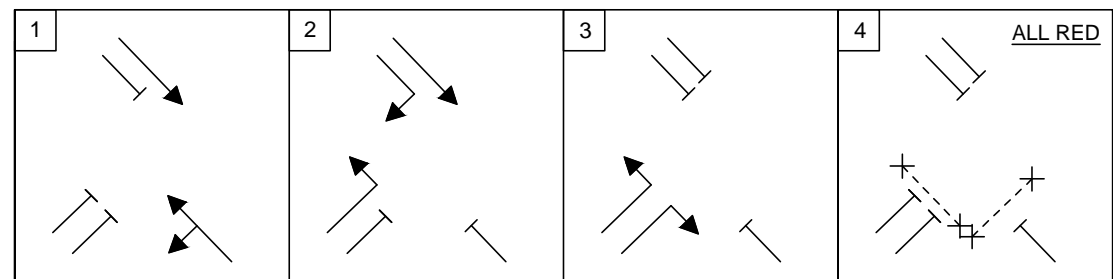
EXISTING ON-STREET PARKING BAYS REMOVED.

BUS STOPS RETAINED.

POSSIBILITY OF PROVIDING CYCLE FEEDER LANE DEPENDING ON NEED IN LIGHT OF ALTERNATIVE ROUTE PROVISION.

EXISTING KERB-LINE RELAXED TO ALLOW LEFT TURN OUT OF NACKINGTON ROAD TO BE PHASED AT SAME TIME AS RIGHT TURN INTO NACKINGTON ROAD AS PER STAGE 2 BELOW.

EXISTING ADVANCED CYCLE STOP-LINE REMOVED, TO PROVIDE ADDITIONAL STORAGE SPACE FOR RIGHT TURNERS INTO OLD DOVER ROAD (ALTERNATIVE ROUTES PROVIDED).



Transport Planners and Infrastructure Design Consultants
 The Old Stables, Fry's Yard, Bridge Street, Godalming, Surrey, GU7 1HP
 Tel: 01483 861681 Fax: 01483 861682 www.russellgiles.com

Client
Corinthian Mountfield Limited

Project
Mountfield Park, Canterbury

Drawing Title
Old Dover Road/B2068 Junction Improvements

| | | | |
|-------------------------------------|-----------------------------|--------------------------|---------------------------|
| Scale 1:1000 | Drawn By SAJ | Checked By NDR | Approved By CMB |
| Drawing No. 2013/1749/037 | Date October 2015 | Rev. A | |