

Shepway District Council

Proposed Leisure Centre and
Mixed-Use Development at
Princes Parade
Hythe



Environmental Statement
Technical Annex 2
Cultural Heritage

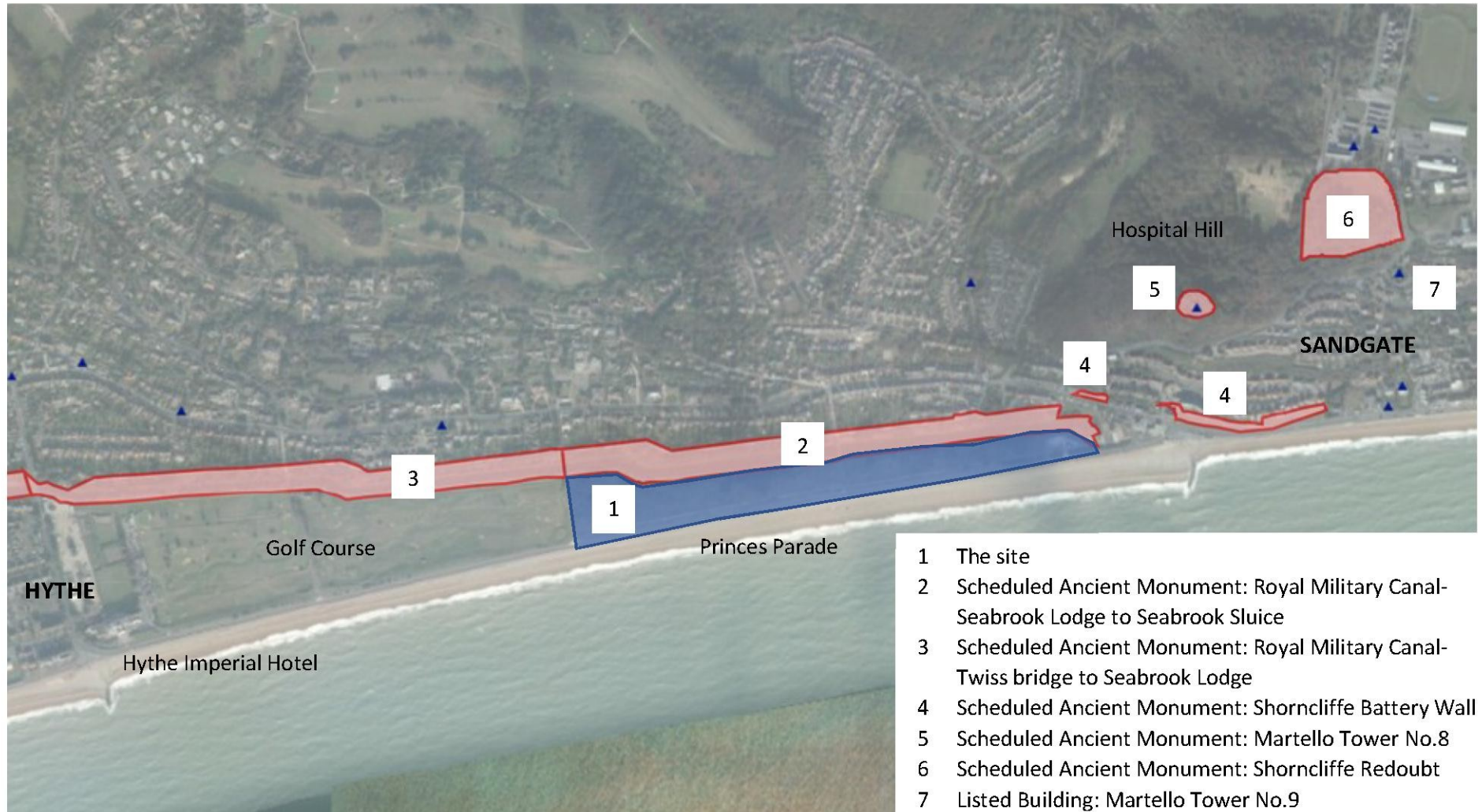
August 2017

Peter Radmall Associates
environmental planning and assessment

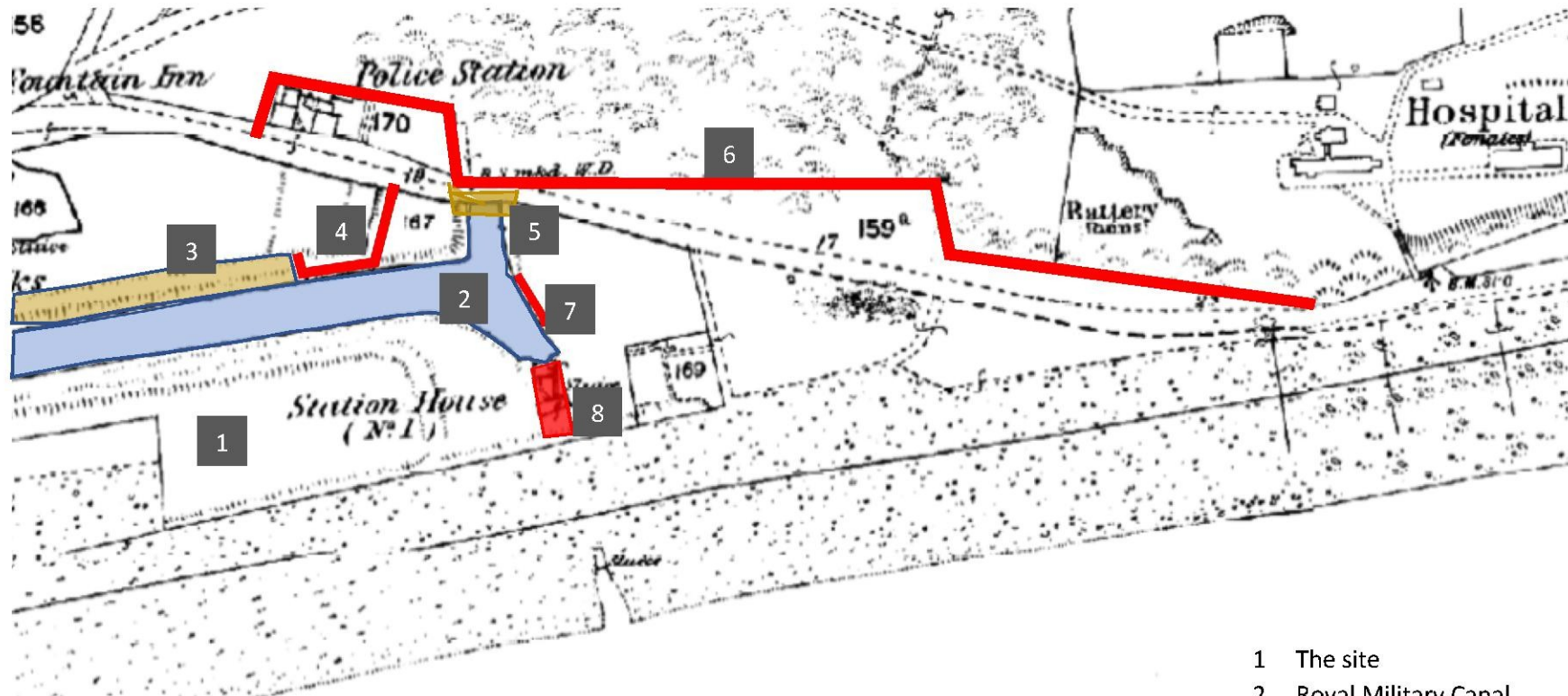


Appendix: Chapter 6 Heritage

Appendix 1: Scheduled Ancient Monuments and listed buildings. Ariel view from Historic England web map

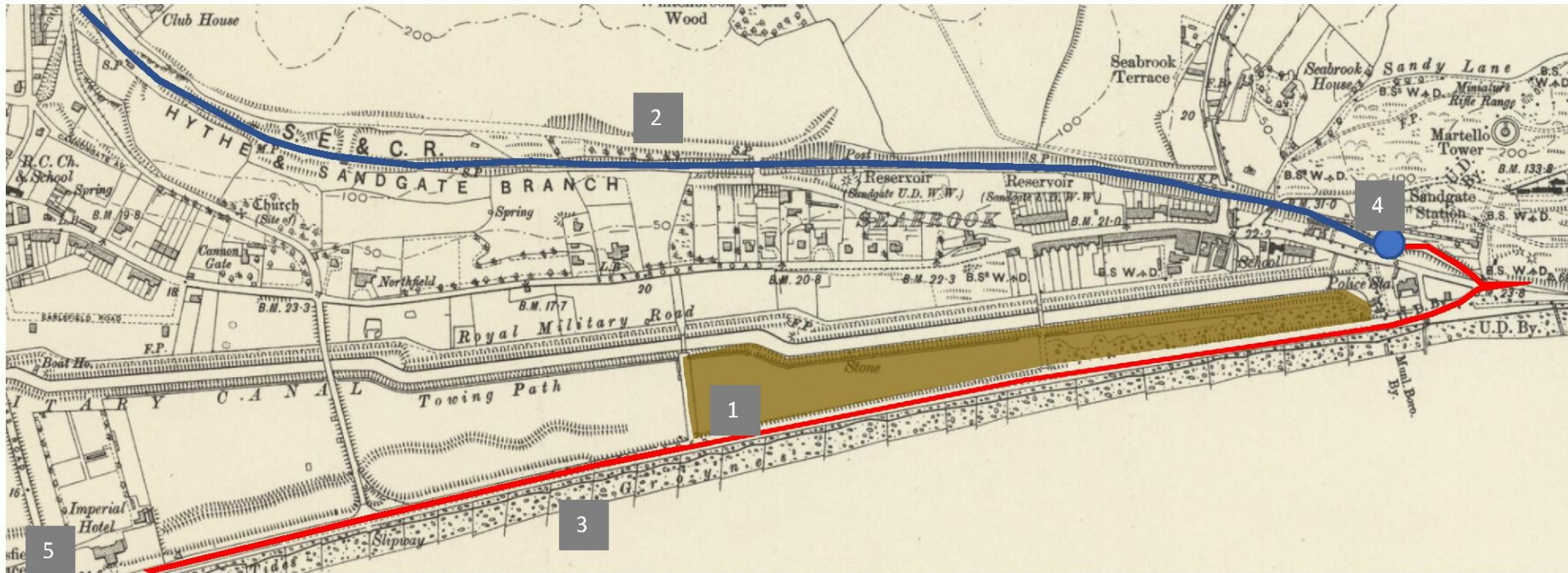


Appendix 2: Canal terminus - Annotated 1871- 1890 Ordnance Survey Map



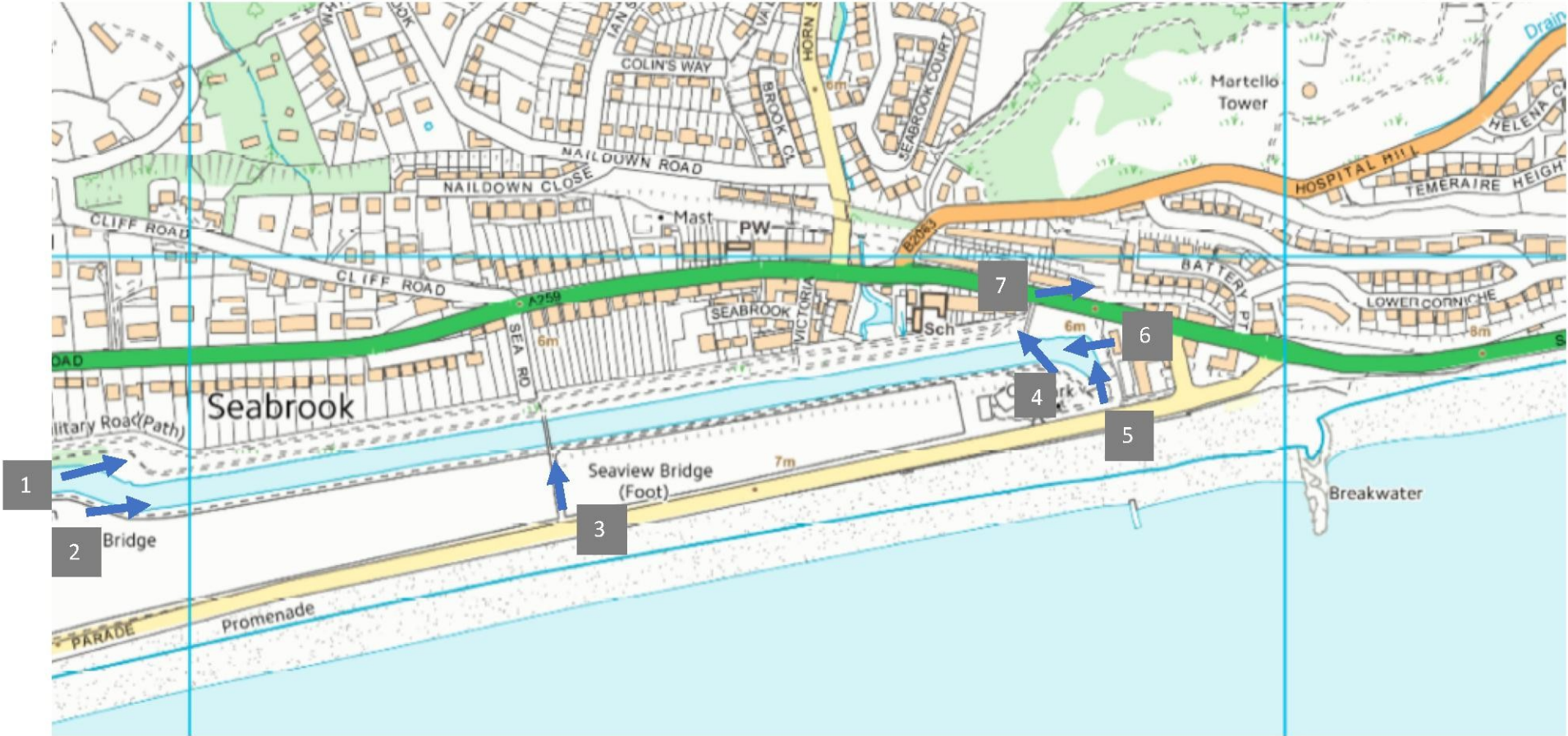
- 1 The site
- 2 Royal Military Canal
- 3 Ramparts
- 4 Drawbridge Redoubt
- 5 site of drawbridge
- 6 Shorncliffe Battery
- 7 Wharf
- 8 site of sluice

Appendix 3: Annotated 1907 Ordnance Survey Map



- 1 The site (brown)
- 2 Railway Line (blue)
- 3 Tram Line (red)
- 4 Sandgate Railway Station
- 5 Seabrook Hotel- now Hythe Imperial Hotel

Appendix 3: site photographs





View 1: looking across kink to firing position



View 2: looking east from kink to terminus of the canal





View 4: from site across canal to drawbridge redoubt



View 5: from former sluice across canal to Shorncliffe Battery




View 6: looking west from canal terminus



View 7: remains of Shorncliffe battery

Figure 4: Analysis of existing views

A: Views from Princes Parade and from the west		
<i>View</i>	<i>Heritage relevance/ significance</i>	<i>Analysis of existing view</i>
 <p><i>From public footpath at golf course to the west of the site towards the site and the RMC. Similar serial views can be experienced at other points along this road</i></p>	<p>Representative of the setting of the RMC with defended ground to the north (left) and seaward ground to be covered by fire from the RMC to the south (right)</p> <p>Princes Parade, along with the development site, stands to the seaward of the RMC and once would have constituted the 'field of fire' from defensive positions along the canal. Similarly views in this direction encompass Hospital Hill and its defences built to command the ground over and in front of the RMC at its eastern end.</p>	<p>Views from the west along Princes Parade and across the golf course towards the RMC are enclosed by the raised land level of the application site, and by trees and vegetation on the defensive ramparts to the north (landward) side. The key aspect of openness of the RMC and its ramparts towards the sea and the attackers' side has been lost.</p> <p>Princes Parade and the application site as existing therefore impinge upon the historic setting of the RMC and harm the RMC's historic functional relationship with the low lying seaward ground in front of it. The significance of the RMC</p>



Just to the west of the public footpath at golf course to the west of the site looking towards the site and the RMC.



To the east along Princes Parade at the boundary of the site with the golf course. Site immediately to the left of the road. RMC between the site and the line of houses.



Category 1 (paragraph 6.49 above) views where relationships between the asset and other historic assets or places or natural features are relevant;

Category 4: views between heritage assets and natural or topographic features....'



in this location has been harmed as a result.

Nevertheless, and although the RMC itself cannot be seen due to the land raising of the site as one moves along the coast road, there is a division between undeveloped land (the site) to the south of the canal, and developed land behind the canal to the north. This permits some understanding of a barrier separating the two character areas. This is reinforced by the continuation of open land across the golf course immediately to the west of the site.

SEE ALSO Landscape and Visual Impact Assessment for Views HE1, 2, 3, 4, 5, 6, 7 and LVIA 3

B: Views along the RMC		
<i>View</i>	<i>Heritage relevance/significance</i>	<i>Analysis of existing view</i>
<p><i>From the Canal terminus looking west</i></p>  <p><i>Sea to the left (south) beyond raised vegetative ground of the site and drawbridge redoubt on the right obscured by trees.</i></p>	<p>The extent of views along the RMC towards its key features and key features of its setting has the potential to illustrate key aspects of its function and its functional relationship with its surroundings.</p> <p><i>Category 1 (paragraph 6.49 above) views where relationships between the asset and other historic assets or places or natural features are relevant;</i></p>	<p>The views within the immediate environs of the RMC are enclosed by the raised land level of the site, and by trees and vegetation on the defensive ramparts to the north (landward) side. The key aspect of openness towards the sea and the attackers' side has been lost. Similarly, an understanding of the drawbridge redoubt as a defensive position commanding a field of fire has also been lost.</p>
<p><i>Looking east along the RMC towards the terminus of the RMC.</i></p>  <p><i>High ground of site on the right. Vegetation obscuring ramparts on the left. New buildings at terminus of RMC obscuring views to other defences</i></p>	<p><i>Category 4: views between heritage assets and natural or topographic features....'</i></p>	<p>SEE ALSO Landscape and Visual Impact Assessment for Views HE1, 2, 3, 4, 5, 6, 7 and LVIA 3</p>

C: Views from Hospital Hill

View	Heritage relevance/ significance	Analysis of existing view
<p><i>From Hospital Hill looking west over the site, golf course and Hythe in the distance</i></p>  <p><i>Eastern end of site obscured by existing modern development.</i></p> <p><i>RMC hidden by topography of Hospital Hill</i></p>	<p>The high point of Hospital Hill provides a vantage point from where the RMC can be seen in context of the wide sweep of land and seascape. In addition, it is the location of Martello Towers 8 and 9 which have a functional relationship with the RMC.</p> <p><i>Category 1 (paragraph 6.49 above) views where relationships between the asset and other historic assets or places or natural features are relevant;</i></p>	<p>Tree cover and the topography of Hospital Hill obscures views and removes a readily interpretable understanding of the integration of the various defences.</p> <p>Only from a short stretch of Hospital Hill Road is there a view over the Canal, the site and the sweep of the bay. This view is however worthwhile in that allows an understanding of the landscape and seascape setting of the Canal and its field of fire. The extreme eastern end of the Canal is hidden from this view by modern houses and the curve of the hill.</p>
<p><i>From the vicinity of Martello Tower No. 8</i></p>  <p><i>Terminus of RMC visible to the right of the large buildings.</i></p>	<p><i>Category 4: views between heritage assets and natural or topographic features....</i></p>	<p>The eastern terminus of the RMC can be seen from the vicinity of Martello Tower No. 9. The view is dominated by large building immediately to the east of the terminus.</p>

