

NOTE:

1. FOR DETAILED LANDSCAPE DESIGN PLEASE REFER TO DRAWINGS:

- MHS175.16-001 Landscape Proposals 1 of 2 - Rev D'
- MHS175.16-002 Landscape Proposals 2 of 2 - Rev D'
- MHS175.16-003 Landscape Elements - Rev A'

- Re aligned road layout based on drawing '617845-CIV-SK105-P2 Proposed_Road_Contours' provided by MLM on 01.06.17

- Canoe Centre is a separate planning application & its location is based on the drawing 'Planning Application Canoe Club' provided by Tibbalds on 08.03.17 in pdf format and as such its accuracy cannot be guaranteed.

- Finished floor levels for the external landscaping and ground floor subject to re aligned road levels and build up

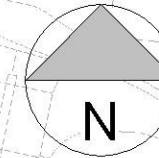
NOTE:

Rationalized car park split into 2 areas.

The eastern car park includes:
 - 39 spaces for the Leisure Centre (incl. 7 accessible spaces)
 - Circa 23 public spaces in lieu of existing spaces (incl. 2 accessible spaces) as highlighted in the traffic survey

The western part includes:
 - 69 standard spaces for the Leisure Centre

108 spaces are provided for the new Leisure Centre (based on Kent parking Standards) in total. All car park provision numbers provided by MLM. The car park provides 20% of spaces to include electric charging points.



This information has been based upon information supplied by third parties and as such their accuracy cannot be guaranteed. All features are approximate and subject to clarification by a detailed topographical survey, statutory service enquiries and confirmation of legal boundaries.

Do not scale this drawing. Use figured dimensions in all cases. Check all dimensions on site. Report any discrepancies to GT3 Architects before proceeding.

10	Issued for Planning Application	28/07/17	CTs
9	Site Location Plan updated	26/06/17	CTs
8	Issued for client review prior to planning application	14/06/17	CTs
7	Secondary splash wall moved 1m towards the south after Tibbalds feedback	07/06/17	CTs
6	Car park layout updated based on new road levels and layout	01/06/17	CTs
5	Issue revised drawings for design freeze	12/04/17	CTs
4	Car park Layout updated based on MLM road layout on 27.03.17	28/03/17	CTs
3	Leisure Centre and service road relocated 3m to the east	15/03/17	CTs
2	Embankment zone included	10/03/17	CTs
1	First Issue	06/03/17	CTs
Rev	Description	Date	Drawn By

Planning

Shepway District Council
 Shepway ARC Model
 Prince's Parade

Proposed Location Plan

JOB NO: 10100
 DWG NO: 150-01
 SCALE: 1 : 1000 @ A3
 DRAWN BY: CTs

DO NOT SCALE
 ALL DIMENSIONS TO BE VERIFIED ON SITE



2nd Floor, TWO
 Jesmond Three Sixty
 Newcastle Upon Tyne
 NE2 1DB

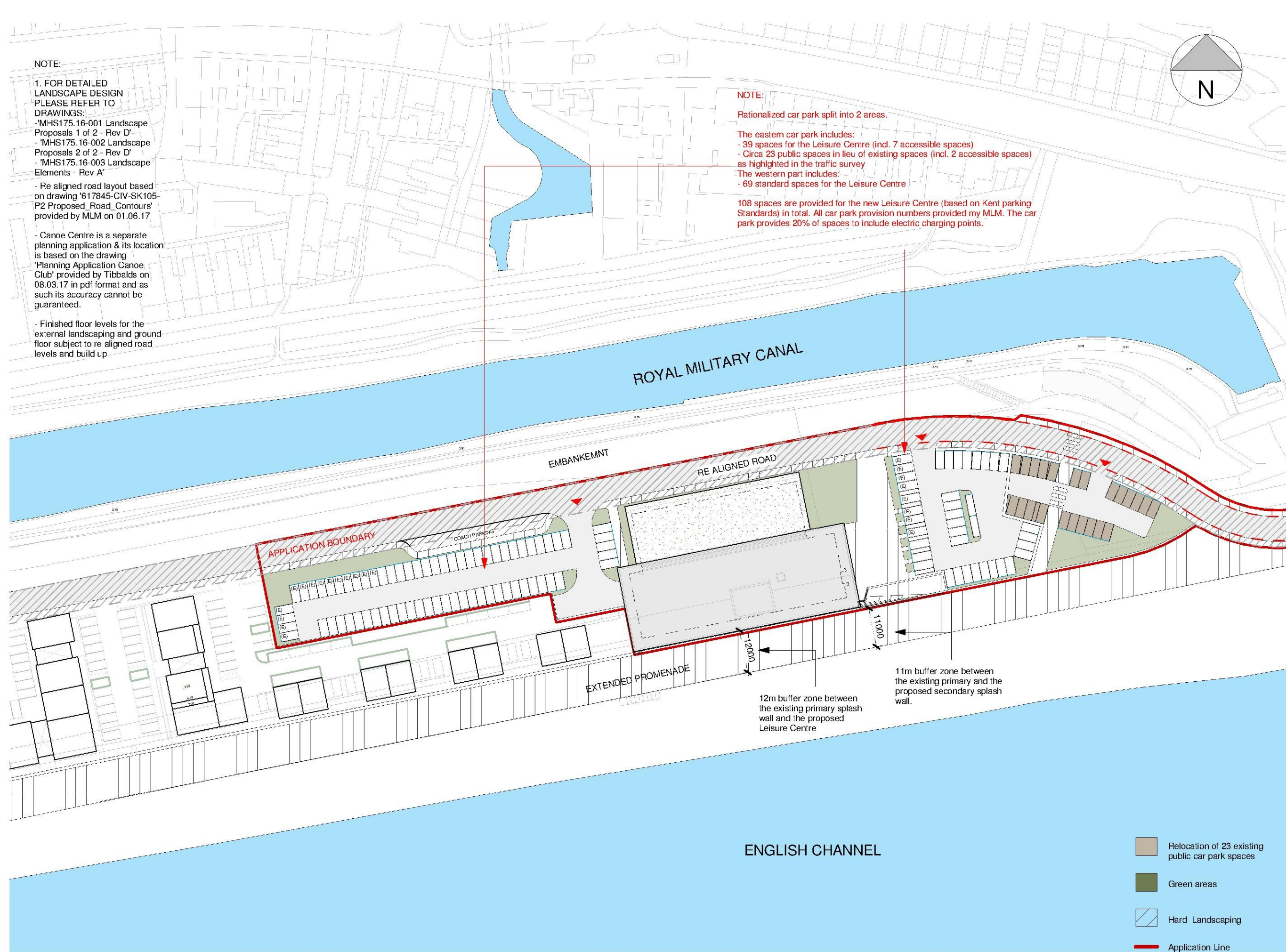
Stanford House
 19 Castle Gate
 Nottingham
 NG1 7AQ

1 0191 2817700

1 0115 9470800

info@gt3architects.com

www.gt3architects.com



ENGLISH CHANNEL

- Relocation of 23 existing public car park spaces
- Green areas
- Hard Landscaping
- Application Line