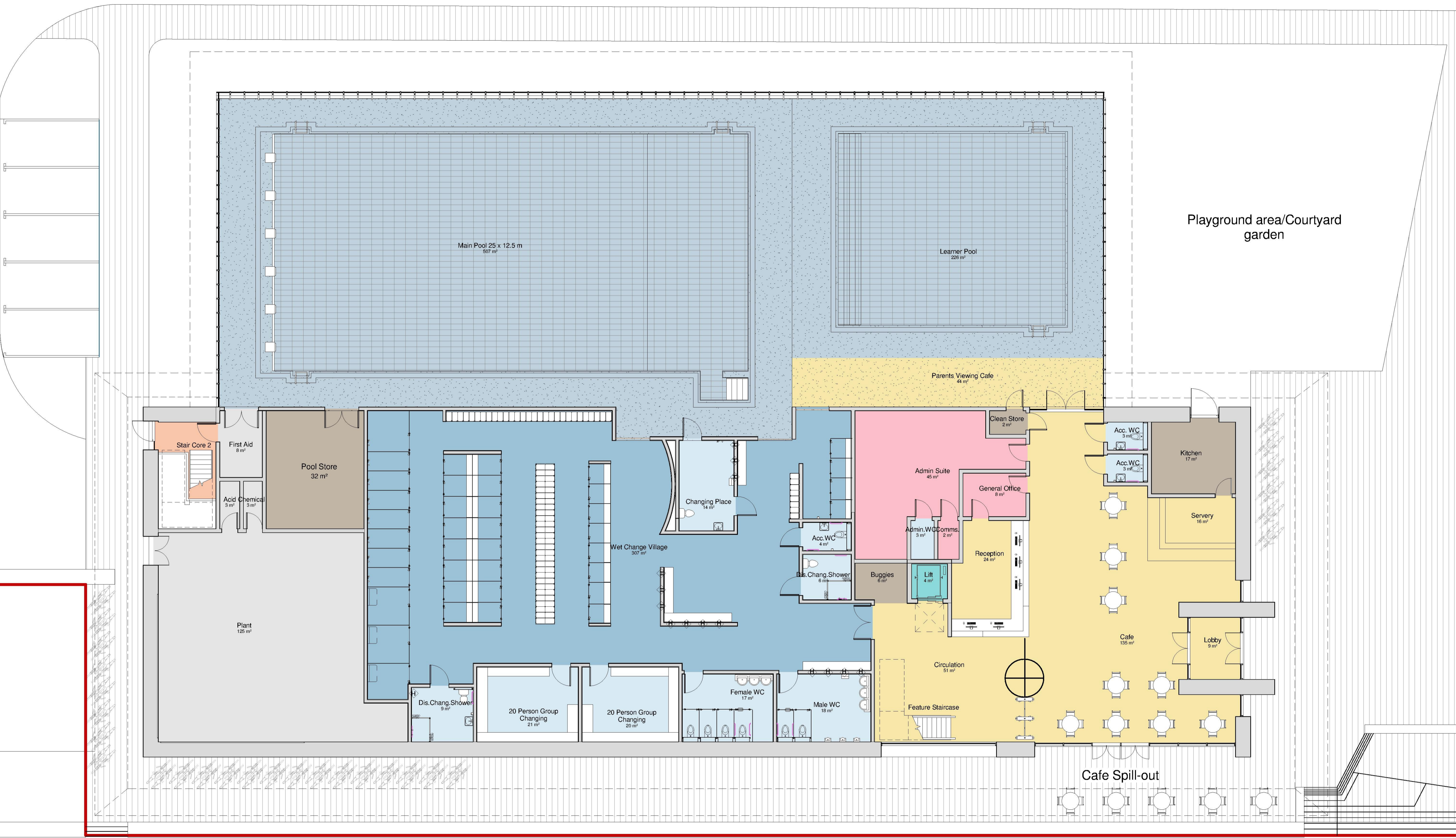


This information has been based upon information supplied by third parties and as such their accuracy cannot be guaranteed. All features are approximate and subject to verification by a detailed topographical survey, statutory services enquiries and confirmation of legal boundaries.

Do not scale this drawing. Use figured dimensions in all cases. Check all dimensions on site. Report any discrepancies to CTS Architects before proceeding.

**NOTE:**

- 1. FOR DETAILED LANDSCAPE DESIGN PLEASE REFER TO DRAWINGS:
  - MHS175.16-001 Landscape Proposals 1 of 2 - Rev D'
  - MHS175.16-002 Landscape Proposals 2 of 2 - Rev D'
  - MHS175.16-003 Landscape Elements - Rev A'



Rev	Description	Date	Drawn By
9	Issued for Planning Application	28/07/17	CTS
8	Issued for client review prior to planning application	14/06/17	CTS
7	Ground & First Floor layout	12/05/17	CTS
6	Updated drawings for design freeze	12/04/17	CTS
5	Updated prior to Client Meeting	16/01/17	CTS
4	Updated following comments from SE Design Panel	09/01/17	CTS
3	Updated design prior to South East Design Panel Meeting	21/11/16	CTS
2	Updated based on client's feedback after DIM on November 2nd	14/11/16	CTS
1	First Issue	27/10/16	CTS

Planning  
 Shepway District Council  
 Shepway ARC Model  
 Prince's Parade

Ground Floor Plan  
 JOB NO: 10100  
 DWG NO: 300-01  
 SCALE: 1:100 @ A1  
 DRAWN BY: CTS

DO NOT SCALE  
 ALL DIMENSIONS TO BE VERIFIED ON SITE