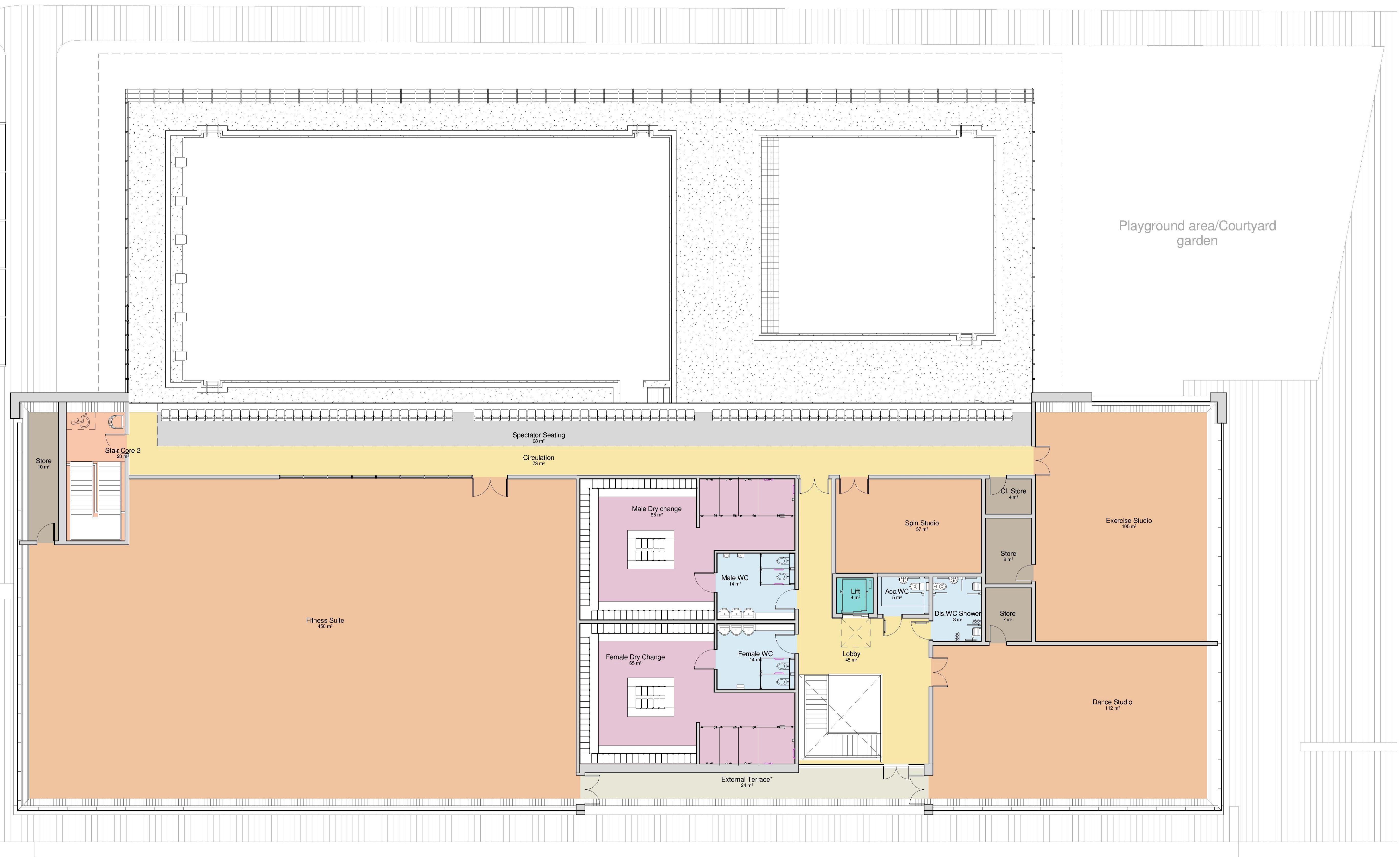


This information has been based upon information supplied by third parties and as such their accuracy cannot be guaranteed. All features are approximate and subject to verification by a detailed topographical survey, statutory services enquiries and confirmation of legal boundaries.

Do not scale this drawing. Use figured dimensions in all cases. Check all dimensions on site. Report any discrepancies to GTC Architects before proceeding.

NOTE:

- 1. FOR DETAILED LANDSCAPE DESIGN PLEASE REFER TO DRAWINGS:
 - MHS175.16-001 Landscape Proposals 1 of 2 - Rev D'
 - MHS175.16-002 Landscape Proposals 2 of 2 - Rev D'
 - MHS175.16-003 Landscape Elements - Rev A'



| Rev | Description | Date | Drawn By |
|-----|--|----------|----------|
| 9 | Issued for Planning Application | 28/07/17 | CTs |
| 8 | Issued for client review prior to planning application | 14/06/17 | CTs |
| 7 | Ground & First Floor layout updated | 12/05/17 | CTs |
| 6 | Issue revised drawings for design freeze | 12/04/17 | CTs |
| 5 | Updated prior to Client Meeting | 16/01/17 | CTs |
| 4 | Updated following comments from SE Design Panel | 09/01/17 | CTs |
| 3 | Updated design prior to South East Design Panel Meeting | 21/11/16 | CTs |
| 2 | Updated based on client's feedback after DIM on November 3rd | 14/11/16 | CTs |
| 1 | First Issue | 27/10/16 | CTs |

Shepway District Council
 Shepway ARC Model
 Prince's Parade

Proposed First Floor Plan
 JOB NO: 10100
 DWG NO: 300-02
 SCALE: 1:100 @ A1
 DRAWN BY: CTs

DO NOT SCALE
 ALL DIMENSIONS TO BE VERIFIED ON SITE