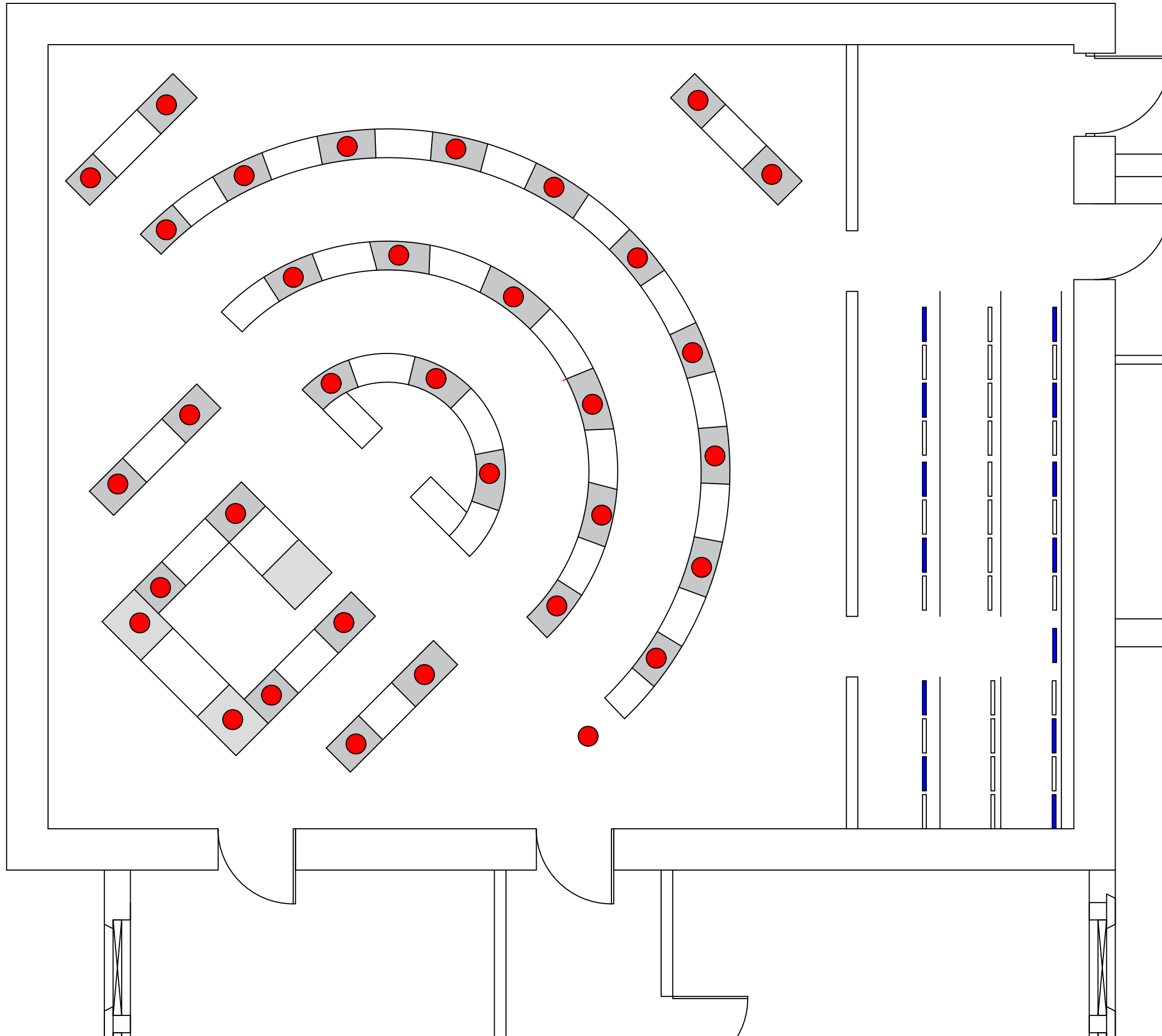


PPIQ 004




Notes

1. Do not scale
2. Dimensions are in millimetres unless stated otherwise

The seating layout had been produced with the following assumptions:

- A degree of staggered seating between rows
- Expected meetings duration in excess of 1 hour.
- Masks in use, and screens fitted.

This layout will allow for 34 persons within the main seating area, (25 Microphones) insitu microphones, 5 using the podium microphone and 4 with Roaming microphones

REV	DESCRIPTION	DATE	BY	CHKD
 <p>Folkestone & Hythe District Council Strategic Development Projects, Civic Centre, Castle Hill Avenue Folkestone, Kent, CT20 2QY Tel: 01303 853000 Fax: 01303 853333</p>				
Project		Civic Centre		
Drawing Title		Council Chamber Seat Layout		
ORIGINAL DRAWING SIZE A3				
Drawn:		Checked:		Date:
Scale		Drawing Number		Rev
NOT TO SCALE				